

# Monolithic crystal filter

## MQF20.0-0300/01



### Application

- 2 pol filter
- i.f.- filter
- use in mobile and stationary transceivers

### Limiting values

		Unit	Value
Center frequency nominal	$f_0$	MHz	20.0
Centre frequency	$f_c$	Mhz	$20.0 \pm 300\text{Hz}$
Insertion loss		dB	$\leq 2.0$
Pass band at 3.0 dB		kHz	$f_c \pm (1.5 \pm 0.25)$
Ripple in pass band	$f_0 \pm 1.00 \text{ kHz}$	dB	$\leq 2.0$
Stop band attenuation	$f_0 \pm 10 \text{ kHz}$	dB	$\geq 30$
Alternate attenuation	$f_0 \pm 10 \dots 5000 \text{ kHz}$	dB	$> 30$
Spurious response	$f_0 \pm 100 \dots 500 \text{ kHz}$	dB	$> 20$

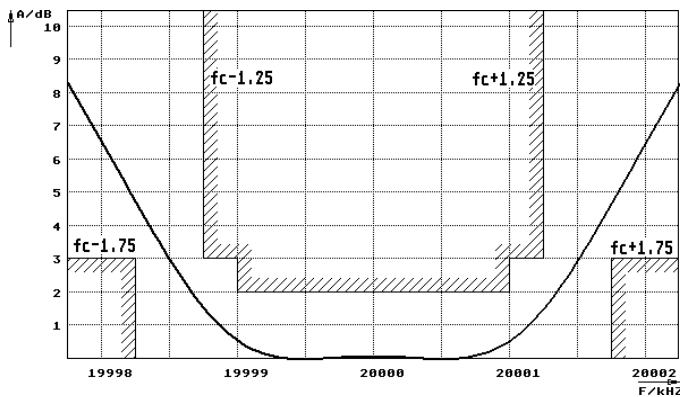
### Terminating impedance Z

R1    C1	Ohm/pF	200    2
R2    C2	Ohm/pF	200    2

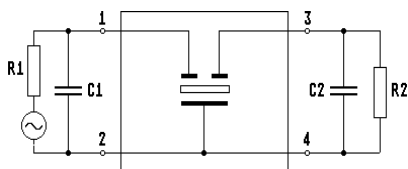
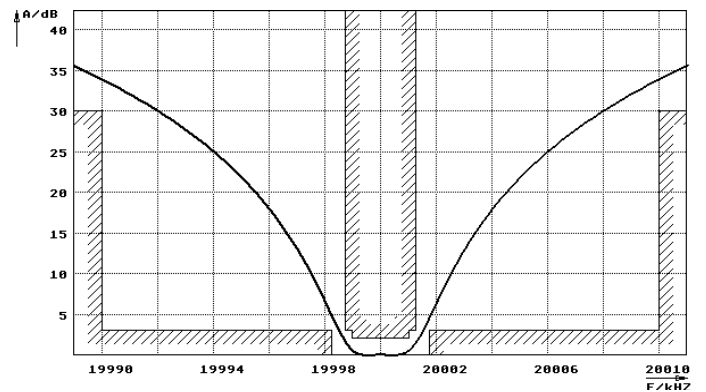
Operating temp. range	° C	-15... +65
-----------------------	-----	------------

### Characteristics MQF20.0-0300/01

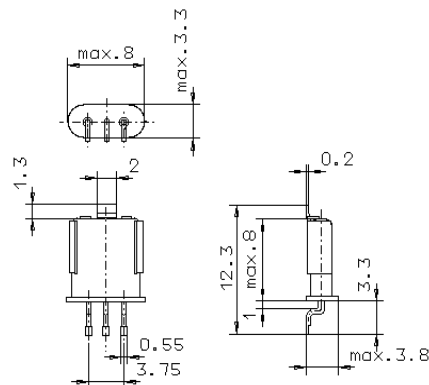
#### Pass band



#### Stop band



Pin connections: 1 Input  
2 Input-E  
3 Output  
4 Output-E



GH9/S