

# Monolithic crystal filter

## MQF10.7-0750/22



### Application

- 8 pol filter
- i.f.- filter
- use in mobile and stationary transceivers

### Limiting values

		Unit	Value
Nominal frequency	$f_0$	MHz	10.7
Centre frequency	$f_c$ at 25°C	MHz	$10.7 \pm 320$ Hz
Insertion loss		dB	$\leq 3.5$
Pass band at 3.0 dB		kHz	$\pm 3.75$
Ripple in pass band	$f_c \pm 2.5$ kHz	dB	$\leq 2.0$
Stop band attenuation	$f_c \pm 8$ kHz	dB	$\geq 60$
	$f_c \pm 10$ kHz	dB	$> 80$
Change of centre frequency	in -20...+70°C	Hz	$< \pm 320$
Alternate attenuation	$f_0 > \pm 20$ kHz	dB	$> 90$

Terminating impedance Z

R1 || C1

Ohm/pF 3000 || 25

R2 || C2

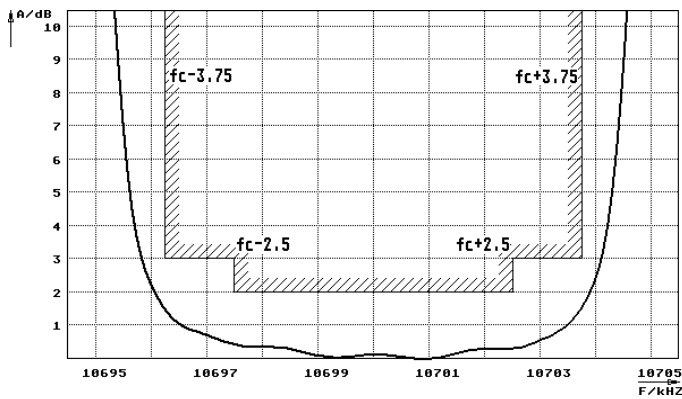
Ohm/pF 3000 || 25

Operating temp. range

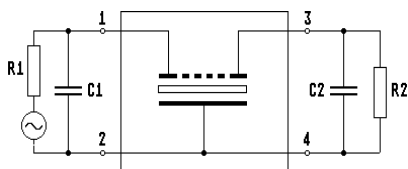
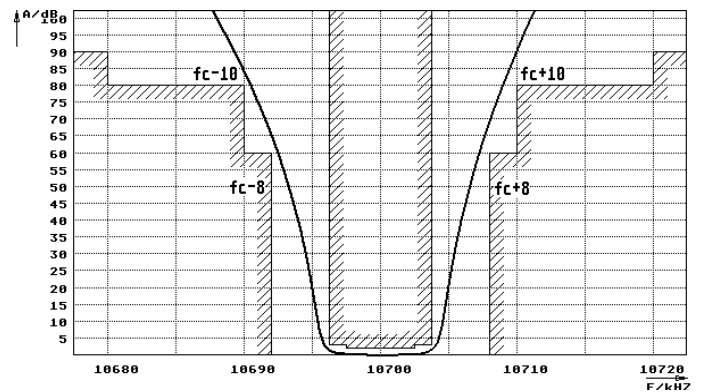
°C -20... +70

### Characteristics MQF10.7-0750/22

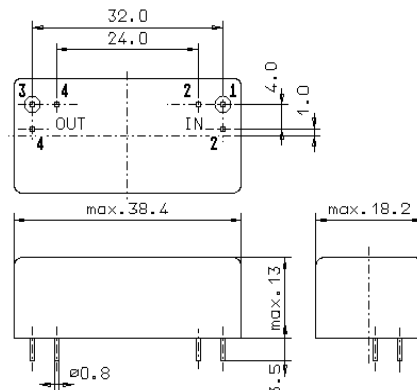
#### Pass band



#### Stop band



Pin connections: 1 Input  
2 Input-E  
3 Output  
4 Output-E



GM17