

Monolithic crystal filter

MQF100.0-1500/06



Application

- 2 pol filter
- i.f.- filter
- use in mobile and stationary transceivers

Limiting values

		Unit	Value
Center frequency	f_0	MHz	100.0
Insertion loss		dB	≤ 2.0
Pass band at 3.0 dB		kHz	± 7.50
Ripple in pass band	$f_0 \pm 5.00$ kHz	dB	≤ 1.0
Stop band attenuation	$f_0 \pm 25$ kHz	dB	≥ 15
Alternate attenuation		dB	> 25
Max.input power continuou		mW	1

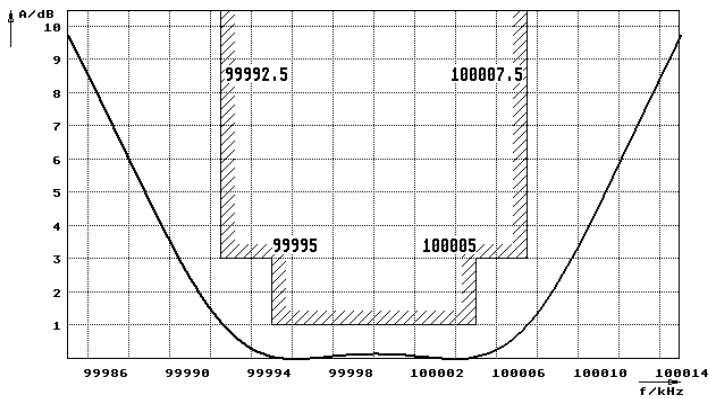
Terminating impedance Z

R1 C1	Ohm/pF	1450 -1.5
R2 C2	Ohm/pF	1450 -1.5

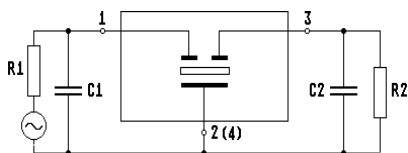
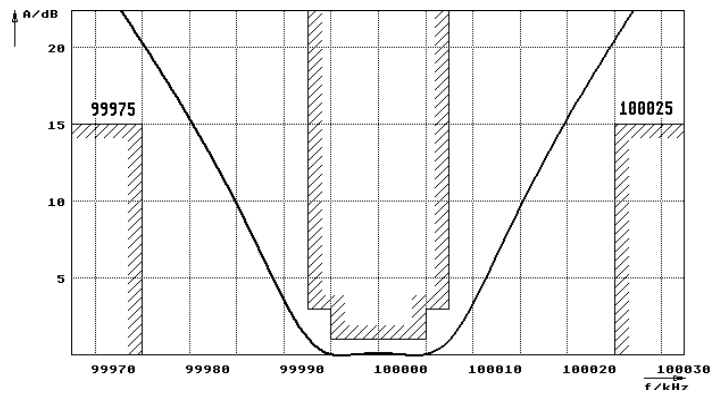
Operating temp. range	$^{\circ}\text{C}$	+0... +70
-----------------------	--------------------	-----------

Characteristics MQF100.0-1500/06

Pass band



Stop band



Pin connections: 1 Input
2 Input-E
3 Output
4 Output-E

