

2012 Size

Chip Multilayer Diplexer for CELL / GPS

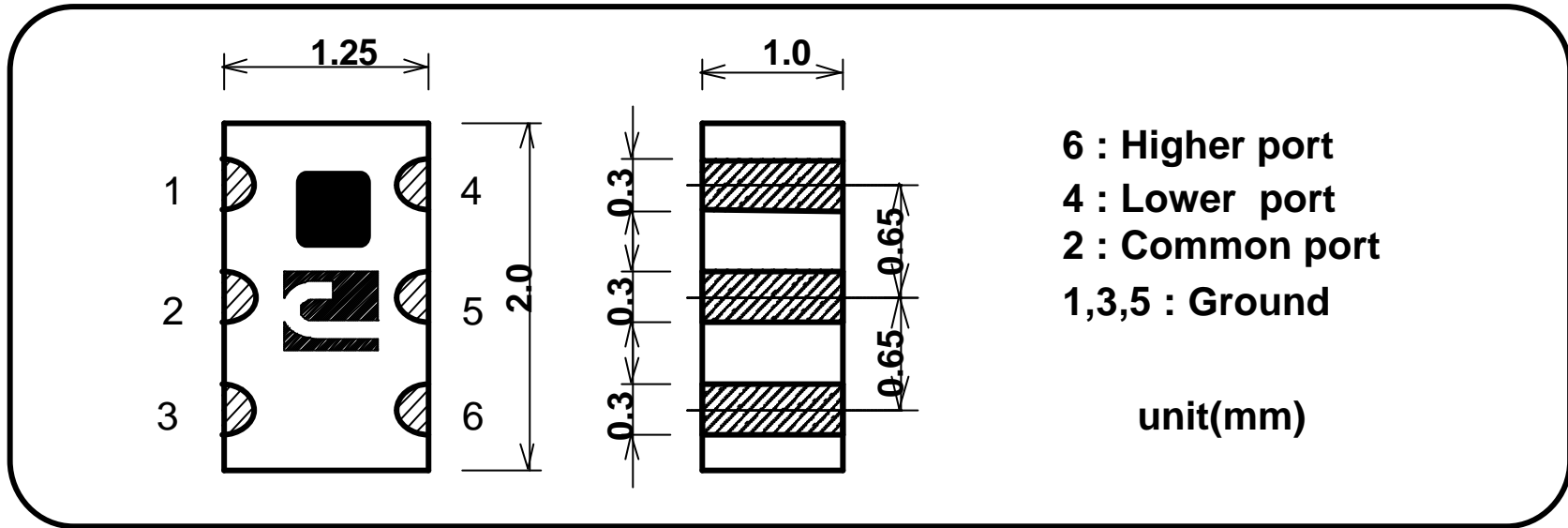
FSLF-S090JG

All the technical data and information contained
herein are subject to change without notice.



LF-FSLF-S090JG-0406A

Shape & Size



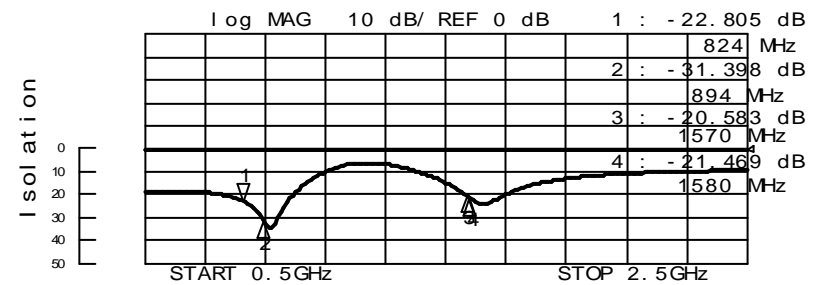
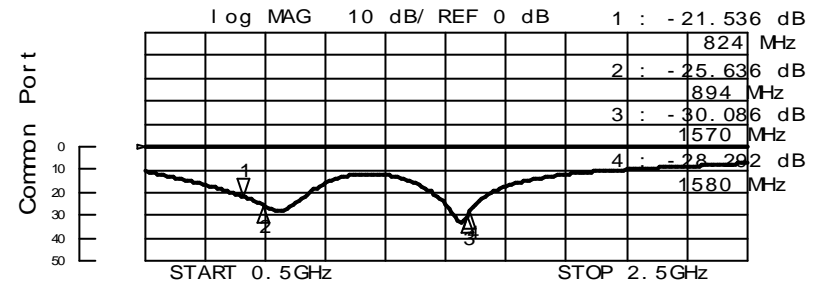
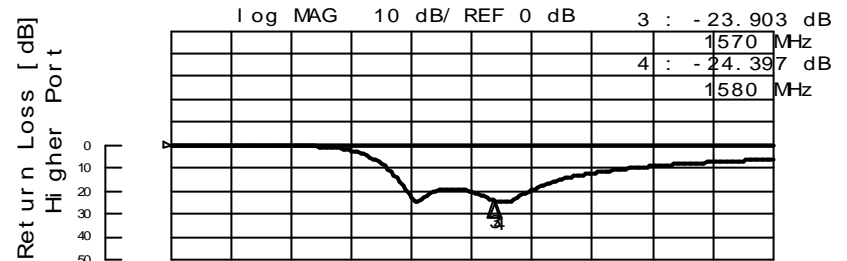
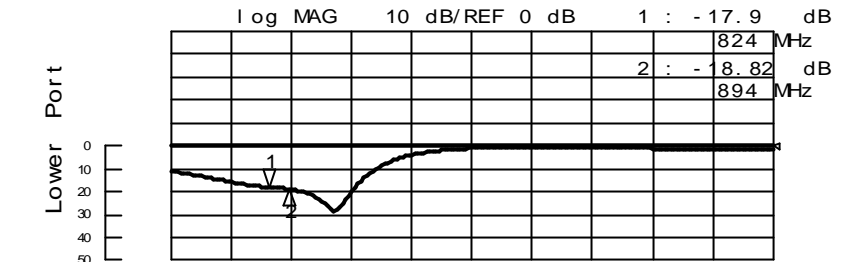
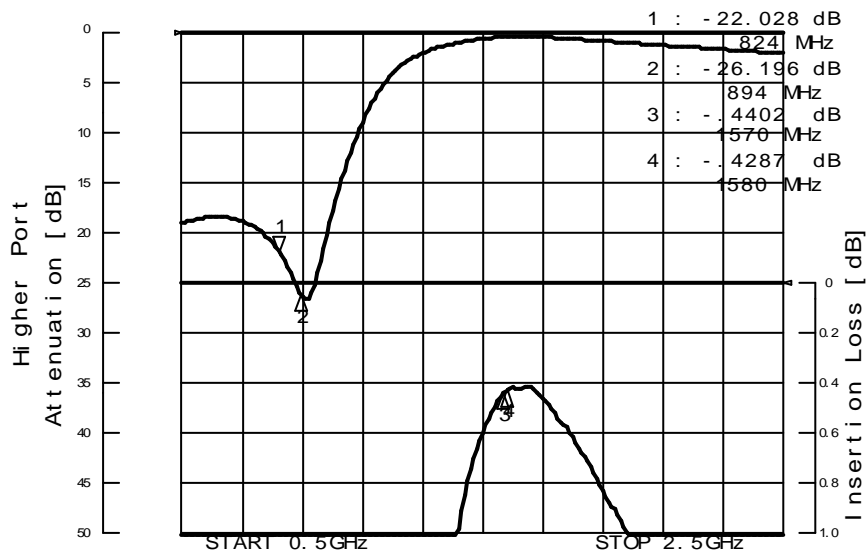
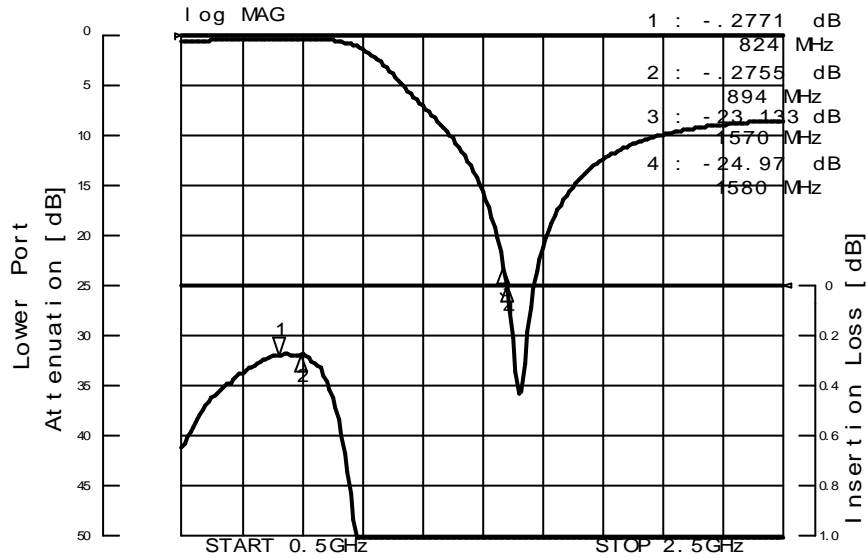
Specifications

Frequency Range	f1:824-894MHz	Attenuation in f2 Lower \Leftrightarrow Common	17dB Min.
	f2:1575.42MHz +/- 1MHz		
Insertion Loss in f1 Lower \Leftrightarrow Common	0.5dB Max.(at 25deg.C)	Attenuation in f1 Higher \Leftrightarrow Common	17dB Min.
	0.55dB Max.(at -35 ~ +85deg.C)		
Insertion Loss in f2 Higher \Leftrightarrow Common	0.6dB Max.(at 25deg.C)	Power Capacity	1W Max.
	0.65dB Max.(at -35 ~ +85deg.C)	Temperature Range	-35to+85deg
Return Loss (all port)	10dB Min.		

All the technical data and information contained herein are subject to change without notice.

LF-FSLF-S090JG-0406A

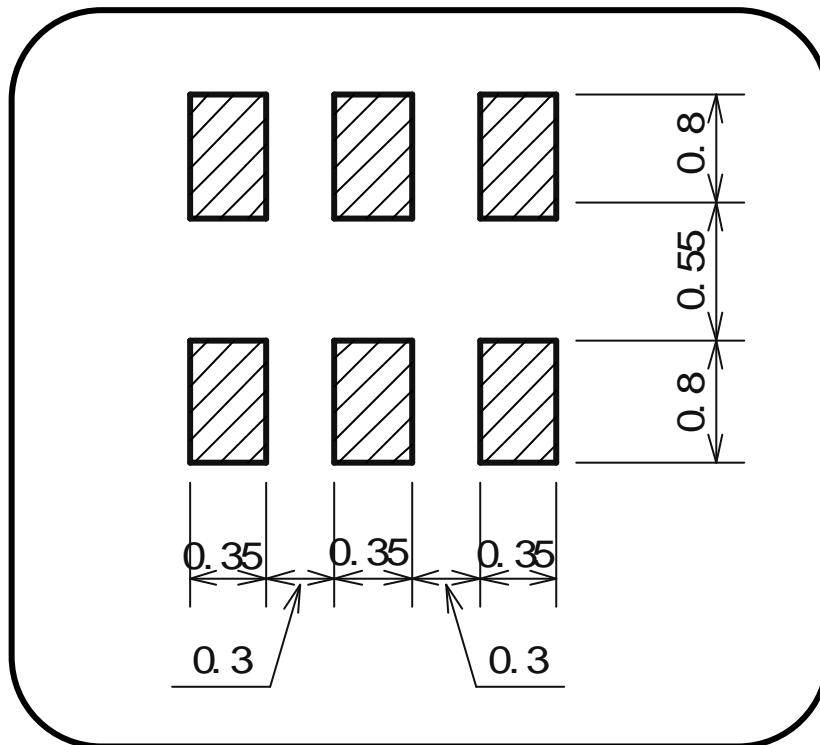
FSLF-S090JG SAMPLE DATA



All the technical data and information contained herein are subject to change without notice.

LF-FSLF-S090JG-0406A

Foot Pattern



Foot Pattern Example

