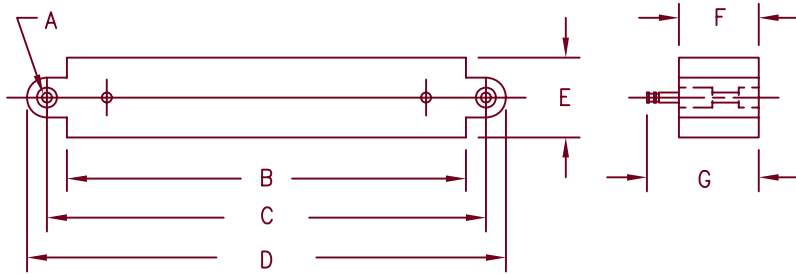


# High Voltage Encapsulated Assemblies EF Half Wave Series



Dimensions			
	Inches	Millimeters	Notes
A	---	---	1
B	5.50	139.7	
C	6.00	152.4	
D	6.625	168.3	
E	1.25	31.8	
F	1.25	31.8	
G	1.688	42.88	

Note 1: .2031" (5.159 mm) Dia. Hole

Microsemi  
Catalog Number

EF\*H16  
EF\*H20

Max. PRV Rating  
Per Circuit Arm

16 KV  
20 KV

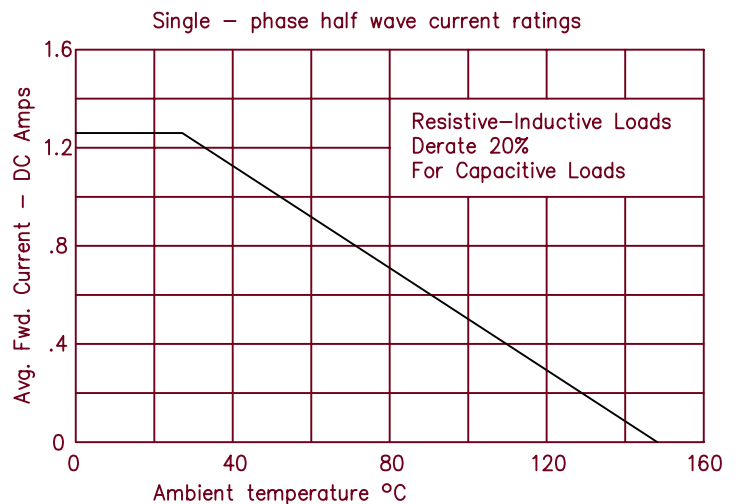
\*Add T for Turret Terminals  
\*Add F for Faston Terminals  
\*Add L for Flexible Lead (min length=4")

- Encapsulated assembly
- Half Wave
- Half Wave rating up to 20,000 PRV
- Completely sealed, compact, corrosion and moisture resistant

## Electrical Characteristics

Circuit: Single half wave  
AC Input: Up to 20,000 PRV  
DC Output: Up to 1.25 Amps DC (see curve)  
Surge Current  
Rating: 15 Amps peak for one cycle  
Loads: Resistive, Inductive, Capacitive, Continuous  
Duty Cycle: Continuous  
Cooling: Convection

Single-phase half wave current ratings



SCOTTSDALE

8700 East Thomas Road, P.O. Box 1390  
Scottsdale, AZ 85252  
PH: (480) 941-6300  
FAX: (480) 947-1503  
www.microsemi.com

04-24-07 Rev. 3