

**Construction**

- RM 10 XLP ferrite core
- Multilayer winding
- 18 gullwing terminals
- Maximum component height 10,3 mm

**Features**

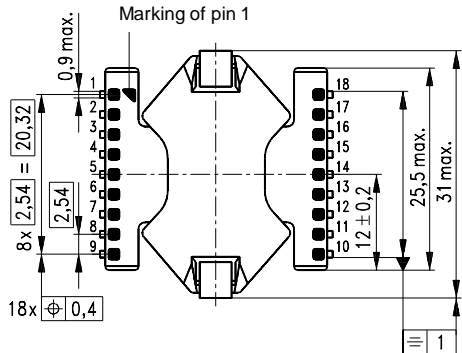
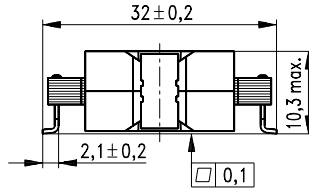
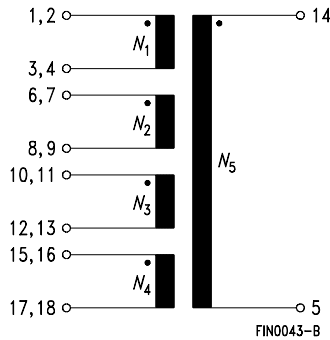
- Low mounting height
- High power density
- Low thermal resistance

**Packing**

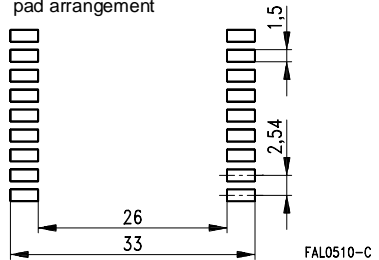
- 44-mm blister tape
- Packing unit: 125 pcs.

**Transformation ratio**

$$N_1 : N_2 : N_3 : N_4 : N_5 = 1 : 1 : 1 : 1 : 5$$



**Recommended pad arrangement**



**Technical data (at 20 °C)**

- Coplanarity < 0,1 mm
- Demagnetization winding: N5

Material	$L_1$ nH	$f_{max}$ kHz	$I_{DC}^{1)}$ A	$V_P$ $V_{DC}$	Ordering code
N87	440	1000	12	500	B78389-A1196-A3

1) At 10 % ripple current superposition