



SAW Components

Data Sheet B7711, Pb-Free





SAW Components

B7711

Low-Loss Filter for Mobile Communication

1950,0 MHz

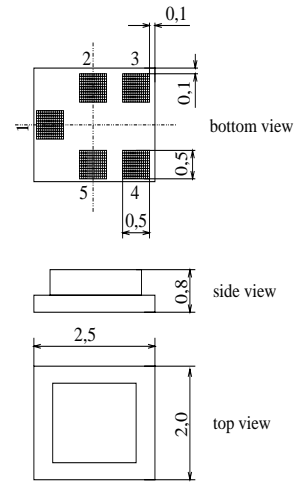
Data Sheet



Chip Sized SAW Package QCS5H

Features

- Low-loss RF filter for W-CDMA mobile telephone system, transmit path
- Low amplitude ripple
- Usable passband 60 MHz
- Balanced to unbalanced operation
- Impedance transformation from 200Ω to 50Ω
- Pb-Free
- Package for **Surface Mounted Technology (SMT)**



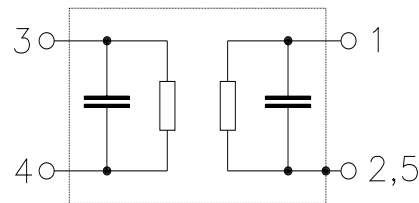
Terminals

- Ni, gold-plated

Dimensions in mm, approx. weight 0,015 g

Pin configuration

- 1 Output, unbalanced
- 2, 5 Output ground
- 3, 4 Input, balanced
- 2, 5 To be grounded



Type	Ordering code	Marking and Package according to	Packing according to
B7711	B39202-B7711-K910	C61157-A7-A139	F61074-V8189-Z000

Electrostatic Sensitive Device (ESD)

Maximum ratings

Operable temperature range	T	- 20 /+ 85	°C	
Storage temperature range	T_{stg}	- 40 /+ 85	°C	
DC voltage	V_{DC}	5	V	
ESD voltage	V^*_{ESD}	50*	V	
Source power	P_S	10	dBm	

*-acc. to JESD22-A115A (Machine Model), 10 negative & 10 positive pulse



SAW Components

B7711

Low-Loss Filter for Mobile Communication

1950,0 MHz

Data Sheet



Characteristics

Operating temperature range: $T = +25\text{ °C}$
 Terminating source impedance: $Z_S = 200\ \Omega$ (balanced) \parallel 22 nH
 Terminating load impedance: $Z_L = 50\ \Omega \parallel$ 6,8 nH

		min.	typ.	max.	
Center frequency	f_C	—	1950,0	—	MHz
Maximum insertion attenuation	α_{\max}	—	2,3	2,7	dB
1920,0 ... 1980,0 MHz					
Amplitude ripple (p-p)	$\Delta\alpha$	—	0,4	0,7	dB
1920,0 ... 1980,0 MHz					
Amplitude ripple per 5MHz channel (p-p)	$\Delta\alpha_{5\text{MHz}}$	—	0,2	0,3	dB
1920,0 ... 1980,0 MHz					
Input VSWR		—	1,8	2,0	
1920,0 ... 1980,0 MHz					
Output VSWR		—	1,8	2,0	
1920,0 ... 1980,0 MHz					
Input amplitude balance (S_{31} / S_{21})		-1,0	0	1,4	dB
1920,0 ... 1980,0 MHz					
Input phase balance ($\phi(S_{31})-\phi(S_{21})+180^\circ$)		-10	0	10	°
1920,0 ... 1980,0 MHz					
Attenuation	α				
50,0 ... 1350,0 MHz		40	45	—	dB
1350,0 ... 1800,0 MHz		29	31	—	dB
1800,0 ... 1880,0 MHz		20	22	—	dB
2110,0 ... 2170,0 MHz		23	25	—	dB
2170,0 ... 2300,0 MHz		30	34	—	dB
2300,0 ... 3200,0 MHz		35	40	—	dB
3200,0 ... 5000,0 MHz		45	55	—	dB
5000,0 ... 6000,0 MHz		40	45	—	dB



SAW Components

B7711

Low-Loss Filter for Mobile Communication

1950,0 MHz

Data Sheet



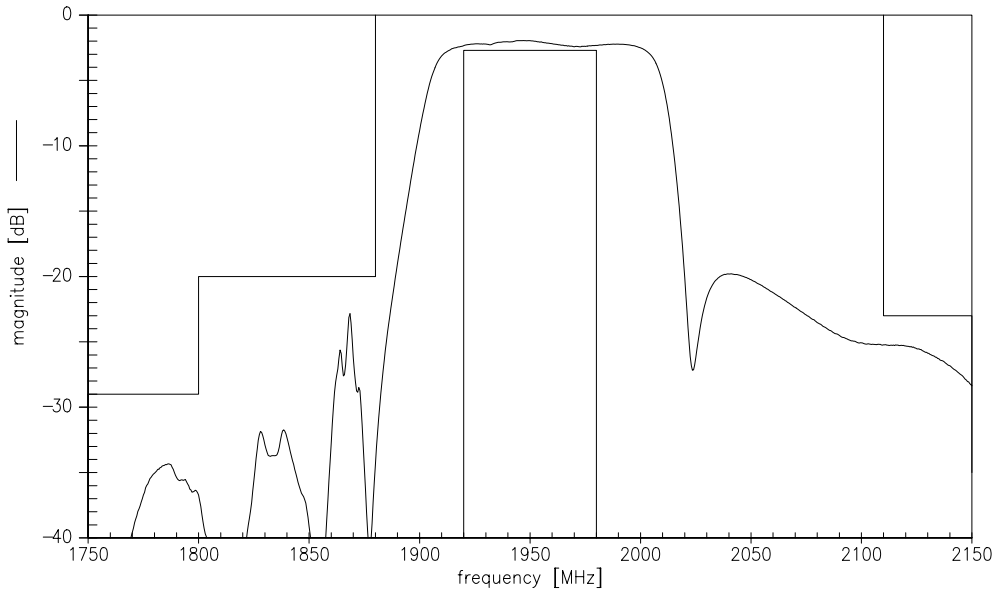
Characteristics

Operating temperature range: $T = -20$ to $+85$ °C
 Terminating source impedance: $Z_S = 200 \Omega$ (balanced) || 22 nH
 Terminating load impedance: $Z_L = 50 \Omega$ || 6,8 nH

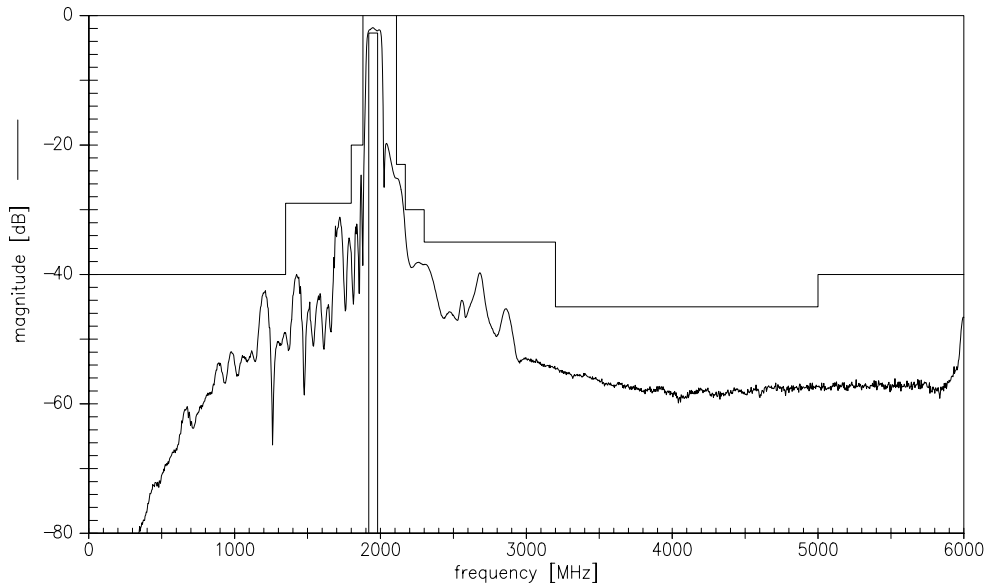
		min.	typ.	max.	
Center frequency	f_C	—	1950,0	—	MHz
Maximum insertion attenuation	α_{max}				
	1920,0 ... 1980,0 MHz	—	2,6	3,0	dB
Amplitude ripple (p-p)	$\Delta\alpha$				
	1920,0 ... 1980,0 MHz	—	0,4	1,0	dB
Amplitude ripple per 5MHz channel (p-p)	$\Delta\alpha_{5MHz}$				
	1920,0 ... 1980,0 MHz	—	0,3	0,5	dB
Input VSWR					
	1920,0 ... 1980,0 MHz	—	1,8	2,1	
Output VSWR					
	1920,0 ... 1980,0 MHz	—	1,8	2,1	
Input amplitude balance (S_{31}/S_{21})					
	1920,0 ... 1980,0 MHz	-1,0	0	1,4	dB
Input phase balance ($\phi(S_{31})-\phi(S_{21})+180^\circ$)					
	1920,0 ... 1980,0 MHz	-10	0	10	°
Attenuation	α				
	50,0 ... 1350,0 MHz	40	45	—	dB
	1350,0 ... 1800,0 MHz	29	31	—	dB
	1800,0 ... 1880,0 MHz	20	22	—	dB
	2110,0 ... 2170,0 MHz	23	25	—	dB
	2170,0 ... 2300,0 MHz	30	33	—	dB
	2300,0 ... 3200,0 MHz	35	40	—	dB
	3200,0 ... 5000,0 MHz	45	55	—	dB
	5000,0 ... 6000,0 MHz	40	45	—	dB



Transfer function:

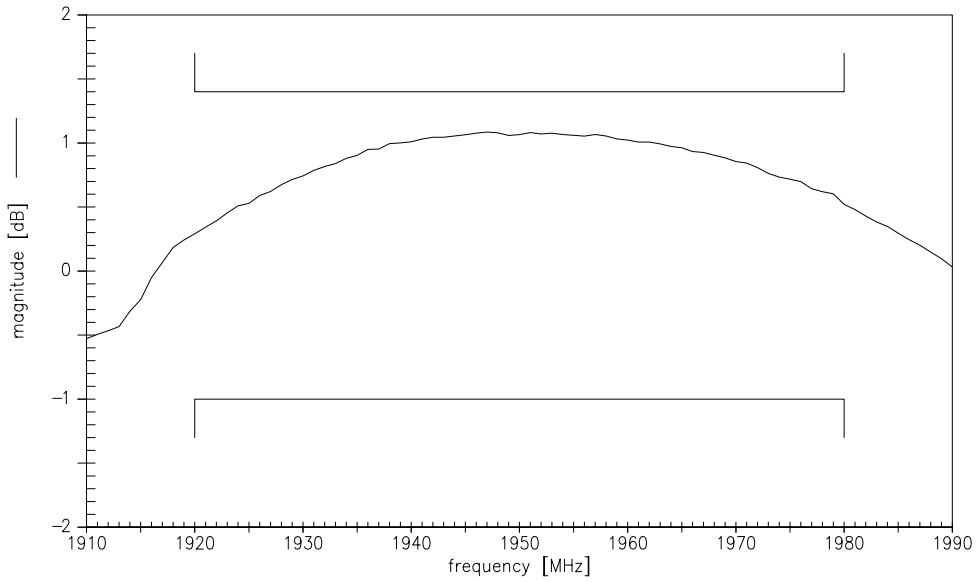


Transfer function (wide band):

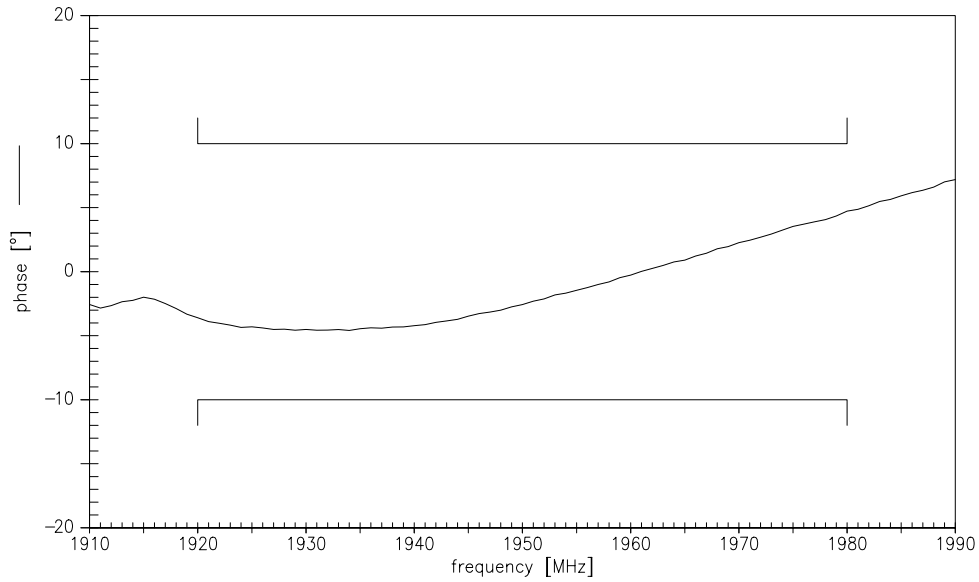




Input amplitude balance (S_{31}/S_{21}):



Input phase balance ($\phi(S_{31})-\phi(S_{21})+180^\circ$):





SAW Components

B7711

Low-Loss Filter for Mobile Communication

1950,0 MHz

Data Sheet



Published by EPCOS AG

Surface Acoustic Wave Components Division, SAW MC PD

P.O. Box 80 17 09, D-81617 München

© EPCOS AG 2005. All Rights Reserved. Reproduction, publication and dissemination of this brochure and the information contained therein without EPCOS' prior express consent is prohibited.

The information contained in this brochure describes the type of component and shall not be considered as guaranteed characteristics. Purchase orders are subject to the General Conditions for the Supply of Products and Services of the Electrical and Electronics Industry recommended by the ZVEI (German Electrical and Electronic Manufacturers' Association), unless otherwise agreed.

This brochure replaces the previous edition.

For questions on technology, prices and delivery please contact the Sales Offices of EPCOS AG or the international Representatives.

Due to technical requirements components may contain dangerous substances. For information on the type in question please also contact one of our Sales Offices.