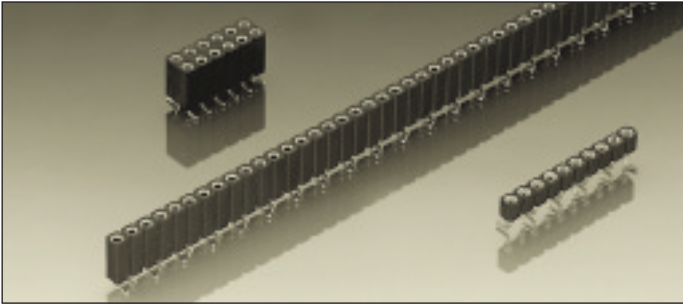


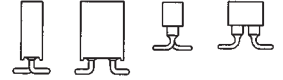
Series 800

PCB connectors 2.54 mm
Single row / double row
Surface mount



Receptacles, surface mount




Accept square pins \square 0.635 mm
and round pins \varnothing 0.70–0.80 mm

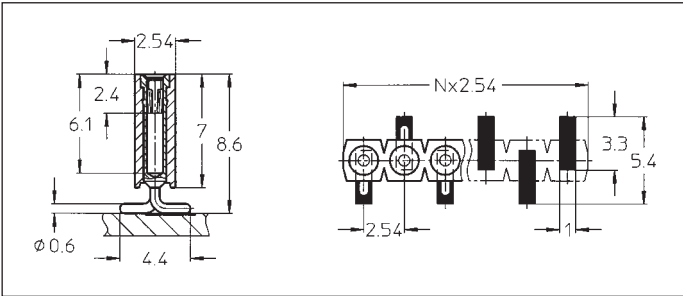


For corresponding pin connectors see
pages 30 to 35

Ordering information

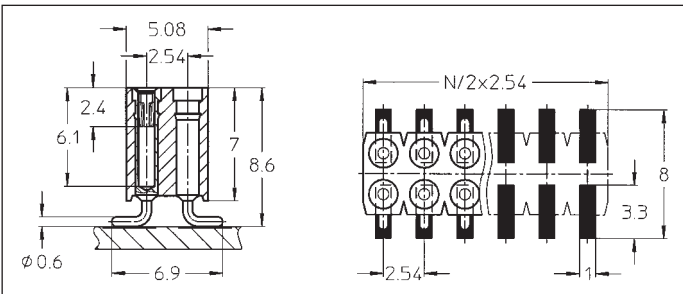
Replace **xxx** with the number of poles, e.g. 803-91-**xxx**-30-001
for a double row version with 8 pins per row becomes:
803-91-**016**-30-001

Platings	Sleeve 	Clip 	Pin 
91	5 μ m Sn Pb	0.25 μ m Au	
93	5 μ m Sn Pb	0.75 μ m Au	
99	5 μ m Sn Pb	5 μ m Sn Pb	



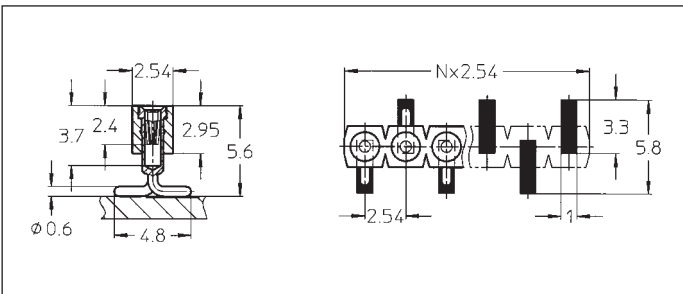
- 801-91-xxx-30-001
- 801-93-xxx-30-001
- 801-99-xxx-30-001

SMD receptacle: single row
perpendicular mount
Availability from: 3 to 50 contacts
Standard number of contacts 24,
28, 29, 30, 36, 42, 48 and 50



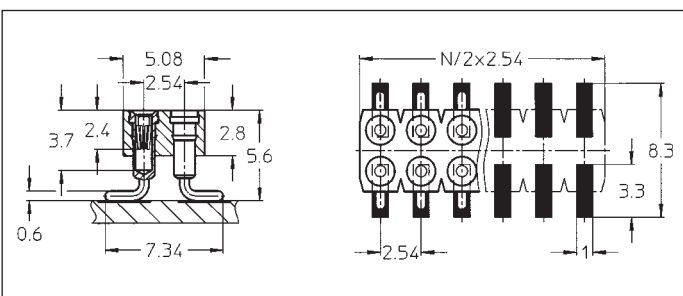
- 803-91-xxx-30-001
- 803-93-xxx-30-001
- 803-99-xxx-30-001

SMD receptacle: double row
perpendicular mount
Availability from: 4 to 100
contacts
Standard number of contacts 72
and 100



- 801-91-xxx-30-002
- 801-93-xxx-30-002
- 801-99-xxx-30-002

SMD receptacle: single row, low
profile, perpendicular mount
Availability from: 3 to 32 contacts
Standard number of contacts 32



- 803-91-xxx-30-002
- 803-93-xxx-30-002
- 803-99-xxx-30-002

SMD receptacle: double row, low
profile, perpendicular mount
Availability from: 4 to 72 contacts
Standard number of contacts 40,
44, 56, 64 and 72