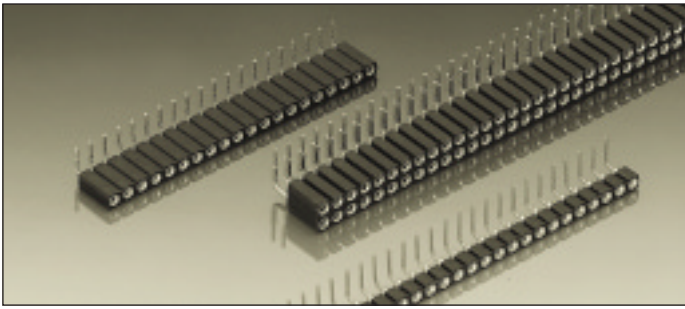


## Series 800

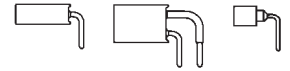
PCB connectors 2.54 mm

Single row / double row

Solder tail



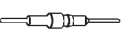


### Right angle receptacles, solder tail



Receptacles accept square pins  $\square$  0.635 mm and round pins  $\varnothing$  0.70–0.80 mm

For corresponding receptacle connectors see pages 30 to 35

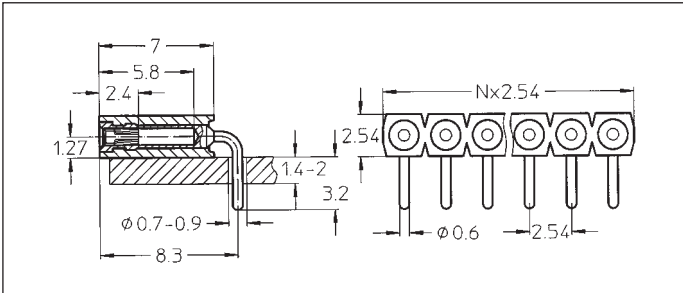
Platings	Sleeve 	Clip 	Pin 
91	5 $\mu$ m Sn Pb	0.25 $\mu$ m Au	
93	5 $\mu$ m Sn Pb	0.75 $\mu$ m Au	
99	5 $\mu$ m Sn Pb	5 $\mu$ m Sn Pb	

### Ordering information

Replace **xxx** with the number of poles, e.g. 803-91-**xxx**-20-001 for a double row version with 8 pins per row becomes: 803-91-**016**-20-001

### Option:

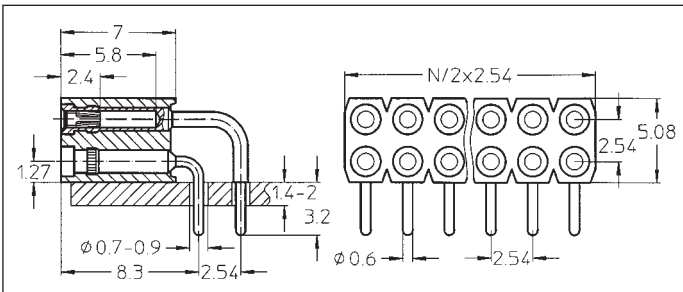
Triple row right angle receptacles on request



- 801-91-xxx-20-001
- 801-93-xxx-20-001
- 801-99-xxx-20-001

Right angle receptacle: solder tail, single row

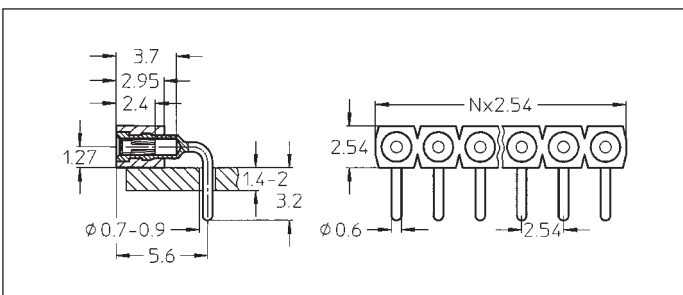
Availability from: 1 to 50 contacts  
Standard number of contacts 24, 28, 29, 30, 36, 42, 48, 50



- 803-91-xxx-20-001
- 803-93-xxx-20-001
- 803-99-xxx-20-001

Right angle receptacle: solder tail, double row

Availability from: 4 to 100 contacts  
Standard number of contacts 72 and 100



- 801-91-xxx-20-002
- 801-93-xxx-20-002
- 801-99-xxx-20-002

Right angle short receptacle: solder tail, single row

Availability from: 1 to 64 contacts  
Standard number of contacts: 64

Right angle short receptacle: solder tail, double row available on request  
Please consult