

3.2mm SQUARE ISOLATOR

MODEL ESI-3EAR 1.950 G 01 - T

(1) (2) (3) (4) (5)

- (1) Series ESI-3EAR ; 1.6 mm Height
- (2) Center Frequency
- (3) G ; GHz
- (4) Control No.
- (5) T ; Taping
Blank ; Bulk

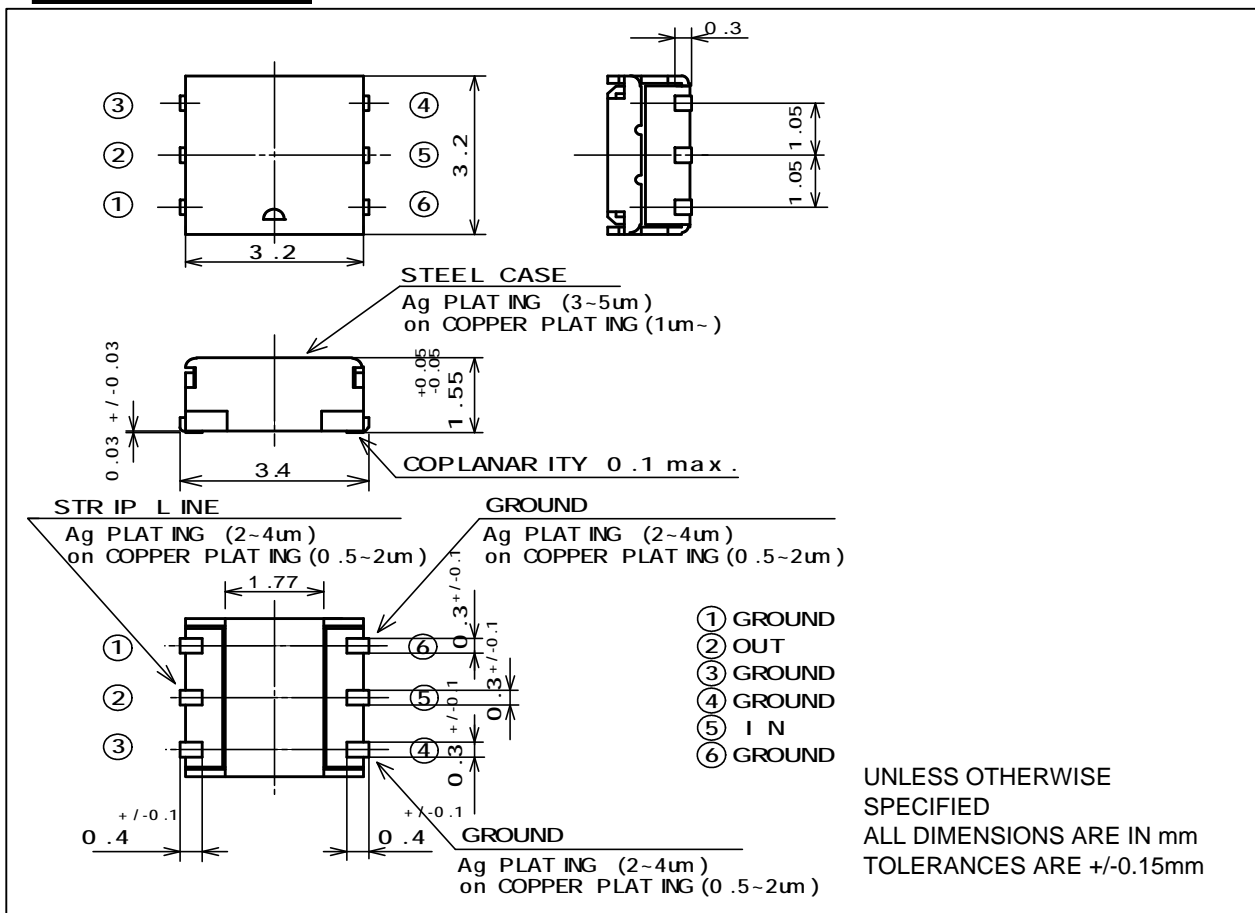
Target Specification

Frequency (GHz)	Ins. Loss Max. (dB)	Isolation Min. (dB)	V.S.W.R. (IN) Max.	V.S.W.R. (OUT) Max.	Attenuation		Handling Power Max. (W)	Reflection Power Max. (W)
					at 2f Min. (dB)	at 3f Min. (dB)		
1.920-1.980	[0.50] 0.60	13	1.50	1.50	12	20	2.5	0.6

Operating Temperature(deg.C) ; -35 to +85
Impedance ; 50 ohms Typ.

[]---Room temperature(deg.C) ; +20 to +30

Shape & Size



TAE883-5



Hitachi Metals, Ltd. Tottori Works