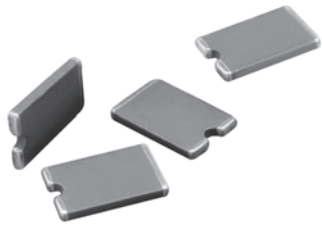


Surface Mount Inductors, Low Profile for DC/DC Converters



FEATURES

- Low profile 0.047" [1.19mm] maximum thickness.
- Self shielding.
- Surface mountable.
- High Q for high efficiency.
- Excellent energy storage.
- Monolithic, ferrite construction.
- Terminals designed for maximum trace EMI and compact circuit design.
- Patents obtained.

APPLICATIONS

Low profile DC/DC converters.
Type I PCMCIA.
Hand held electronics.
Flat panel displays.

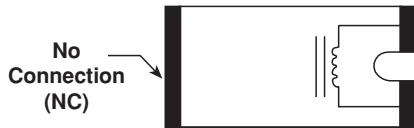
ELECTRICAL SPECIFICATIONS

Inductance Range: 4.7 μ H to 10 μ H.

Inductance Tolerance: $\pm 20\%$.

Temperature Range: - 40°C to + 85°C.

SCHEMATIC

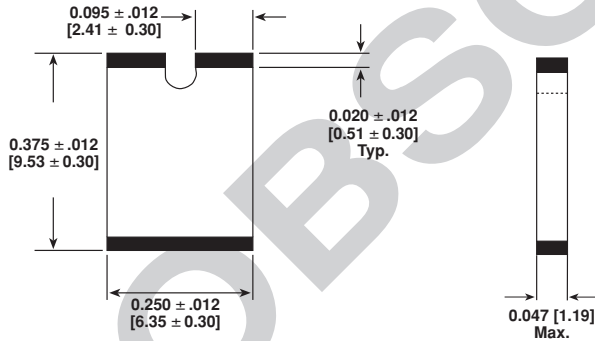


STANDARD ELECTRICAL SPECIFICATIONS

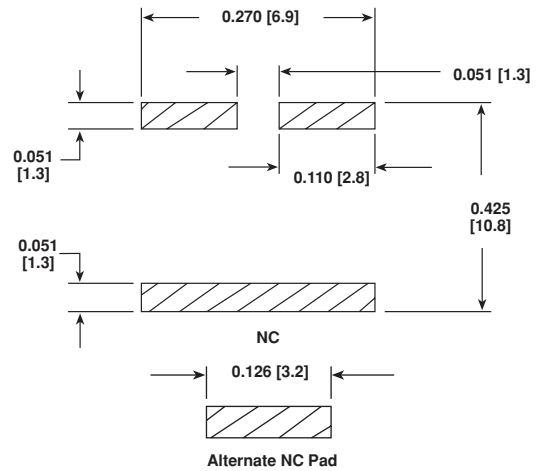
MODEL	IND. (μ H) $\pm 20\%$ @ 10kHz w/600mA DC	Q @ 500 kHz (Min.)	SELF RESONANT FREQ. MIN. (MHz)	DCR MAX. (Ohms)	RATED DC CURRENT (mA)
ILS-3825- 01	10.0	20	9	0.65	1,000
ILS-3825- 03	4.7	18	13	0.45	1,200

DIMENSIONS in inches [millimeters]

DIMENSIONAL OUTLINE



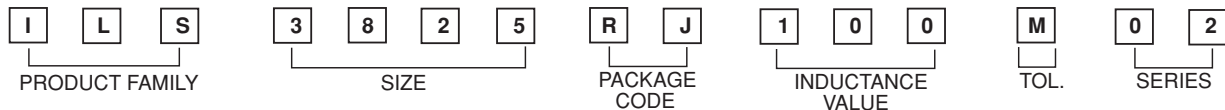
PAD LAYOUT



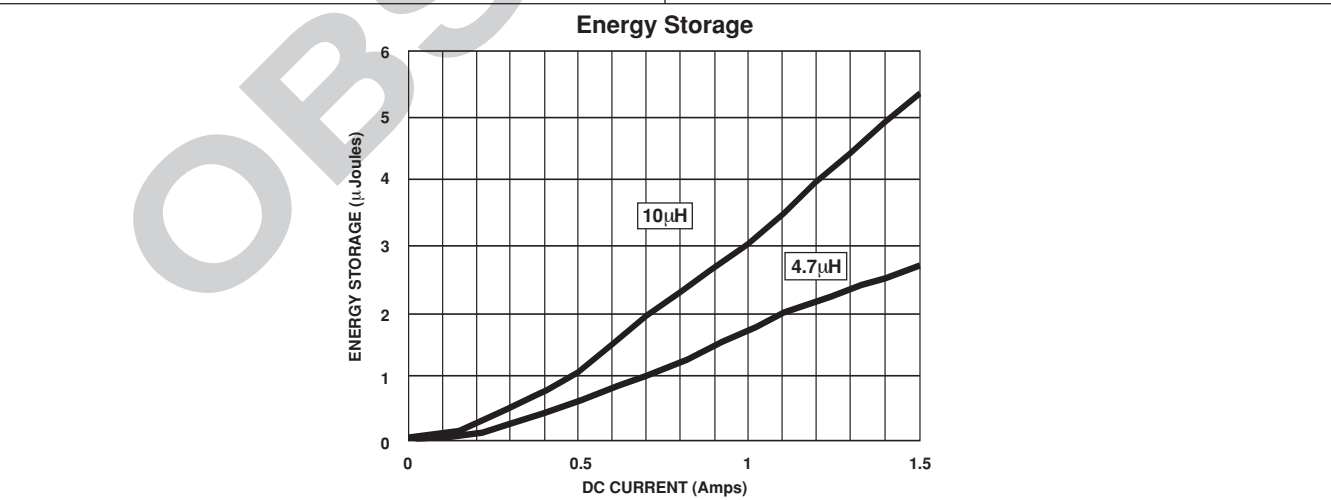
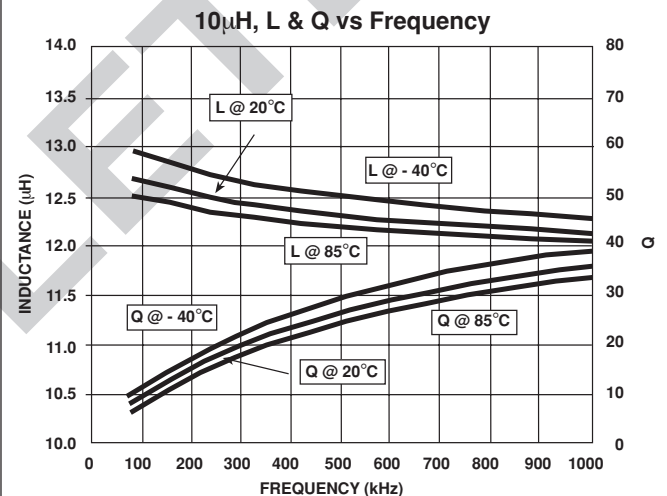
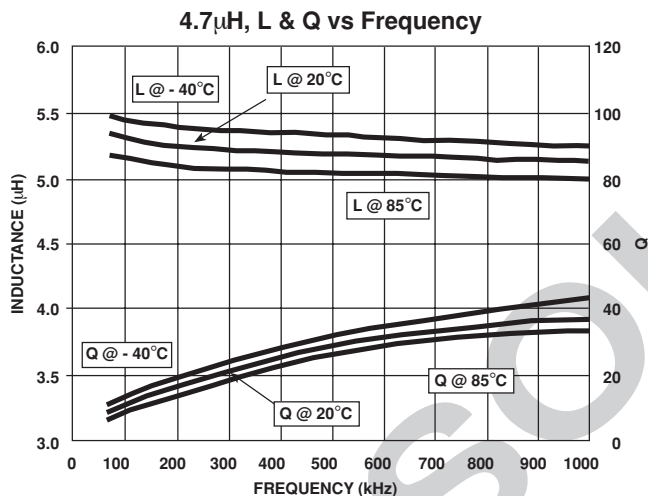
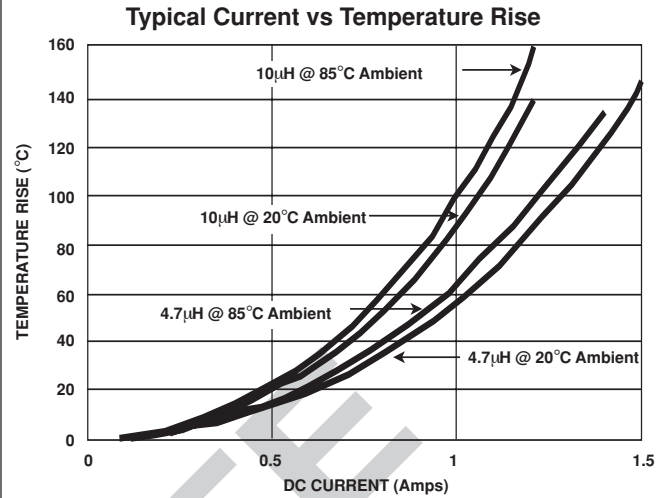
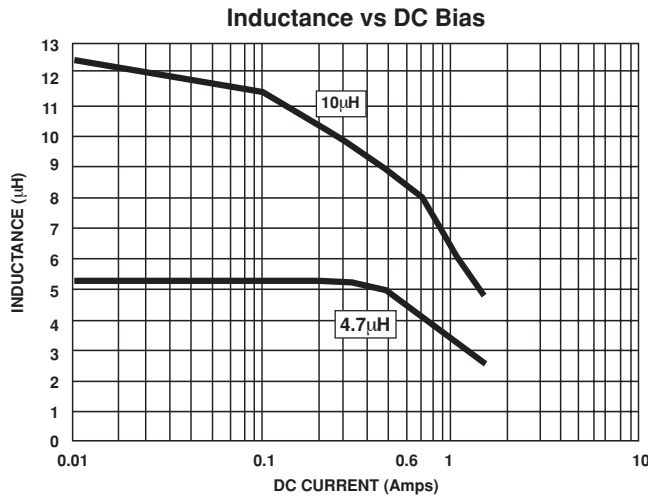
DESCRIPTION

ILS-3825 MODEL	10 μ H INDUCTANCE VALUE - 01 (10 μ H) - 03 (4.7 μ H)	$\pm 20\%$ INDUCTANCE TOLERANCE
-------------------	---	---------------------------------------

SAP PART NUMBERING GUIDELINES (INTERNAL)



See the end of this data book for conversion tables

PERFORMANCE GRAPHS

PACKAGING OPTIONS

- Tape and Reel:
 Embossed plastic carrier tape.
 Per EIA481-1.
 2000 pieces on a 13" [330mm] reel.