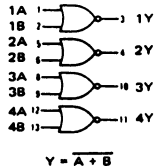
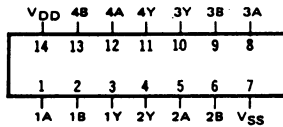


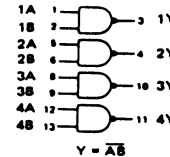
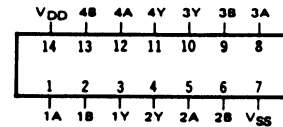
**SCL4001UB**

UNBUFFERED QUAD TWO INPUT NOR GATE



**SCL4011UB**

UNBUFFERED QUAD TWO INPUT NAND GATE



**STATIC CHARACTERISTICS: ( V<sub>SS</sub> = 0 V )**

PARAMETER	CONDITIONS	V <sub>DD</sub> (V <sub>dC</sub> )	T <sub>LOW</sub> *		+25°C			T <sub>HIGH</sub> **		UNIT
			MIN	MAX	MIN	TYP	MAX	MIN	MAX	
QUIESCENT DEVICE CURRENT I <sub>DD</sub>	V <sub>IN</sub> = V <sub>SS</sub> OR V <sub>DD</sub>	5		0.05		0.0005	0.05		1.5	μA <sub>dC</sub>
		10		0.1		0.001	0.1		3.0	
		15		0.2		0.002	0.2		6.0	

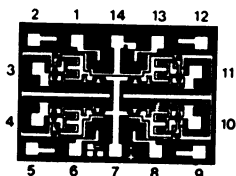
Note: \*T<sub>LOW</sub> = -55°C for C / H devices, -40°C for E / S devices, \*\*T<sub>HIGH</sub> = +125°C for C / H devices, +85°C for E / S devices.

**DYNAMIC CHARACTERISTICS: ( CL = 50pF, TA = 25°C )**

PARAMETER	V <sub>DD</sub> V <sub>dC</sub>	MINIMUM	TYPICAL	MAXIMUM	UNIT
PROPAGATION DELAY TIME t <sub>PLH</sub> , t <sub>PHL</sub>	5		60	120	ns
	10		30	60	
	15		25	50	
OUTPUT TRANSITION TIME t <sub>TLH</sub> , t <sub>THL</sub>	5		100	200	ns
	10		50	100	
	15		40	80	

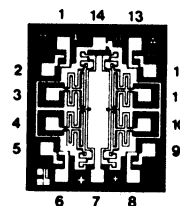
**DIE DRAWING**

SCL4001UB  
62 x 44 mils



**DIE DRAWING**

SCL4011UB  
43 x 52 mils



Note: Refer to "SCL4000B SERIES FAMILY SPECIFICATIONS" for remaining Dynamic & Static Characteristics, and, for recommended and maximum operating conditions.