

# International Rectifier IRFK3D250, IRFK3F250

## Isolated Base Power HEX-pak™ Assembly - Half Bridge Configuration

- High Current Capability.
- UL recognised E78996.
- Electrically Isolated Base Plate.
- Easy Assembly into Equipment.

### Description

The HEX-pak™ utilises the well-proven HEXFET™ die, combining low on-state resistance with high transconductance. These superior technology die are assembled by state of the art techniques into the TO-240 package, featuring 2.5kV rms isolation and solid M5 screw connections. The small footprint means the package is highly suited to power applications where space is a premium. Available in two versions, IRFK.D... for fast switching and IRFK.F... for oscillation sensitive applications.

$$V_{DS} = 200V$$

$$R_{DS(on)} = 30m\Omega$$

$$I_D = 70A$$

### Absolute Maximum Rating

	Parameter	Max.	Units
$I_D @ T_C=25^\circ C$	Continuous Drain Current	70	A
$I_D @ T_C=100^\circ C$	Continuous Drain Current	41	A
$I_{DM}$	Pulse Drain Current	280	A ①
$P_D @ T_C=25^\circ C$	Maximum Power Dissipation	625	W
$V_{GS}$	Gate-to-Source Voltage	20	V
$V_{INS}$	R.M.S. Isolation Voltage, circuit to base	2.5	kV
$T_J$	Operating Junction Temperature Range	-40 to 150	°C
$T_{STG}$	Storage Temperature Range	-40 to 150	°C

### Thermal and Mechanical Specifications

	Parameter	Min.	Typ.	Max.	Units
$R_{thJC}$	Junction-to-Case	-	-	0.20	K/W ②
$R_{thCS}$	Case-to-Sink, smooth & greased surface	-	0.1	-	K/W
T	Mounting Torque +10%				③
	HEXpak to Heatsink	-	5	-	Nm
	Busbar to HEXpak	-	3	-	Nm
wt	Approximate Weight	-	140	-	g
		-	5	-	oz

#### Notes:

- ① - Repetitive Rating: Pulse width limited by maximum junction temperature see figure 8.
- ② - Per Module.
- ③ - A mounting compound is recommended and the torque should be rechecked after a period of three hours to allow for the spread of the compound.

# IRFK3D250, IRFK3F250



## Electrical Characteristics @ $T_J = 25^\circ\text{C}$ (Unless otherwise specified)

	Parameter	Min.	Typ.	Max.	Units	Test Conditions	
$B_{V_{DS}}$	Drain-to-Source Breakdown voltage	200	-	-	V	$V_{GS}=0\text{V}$ , $I_D=1.0\text{mA}$	
$R_{DS(on)}$	Static Drain-to-Source On-State Resistance	-	24	30	m $\Omega$	$V_{GS}=10\text{V}$ , $I_D=41\text{A}$	
$I_{D(on)}$	On-State Drain Current	70	-	-	A	$V_{DS} > I_{D(on)} \times R_{DS(on)}$ max, $V_{GS}=10\text{V}$	
$V_{GS(th)}$	Gate Threshold Voltage	2.0	-	4.0	V	$V_{DS}=V_{GS}$ , $I_D=1.0\text{mA}$	
$g_{fs}$	Forward Transconductance ④	36	54	-	S	$V_{DS} > 50\text{V}$ , $I_D=41\text{A}$	
$I_{DSS}$	Zero Gate Voltage Drain Current	-	-	0.75	mA	$V_{DS}=V_{DSmax}$ , $V_{GS}=0\text{V}$	
		-	-	3.0	mA	$V_{GS}=10\text{V}$ , $T_C=125^\circ\text{C}$ , $V_{DS}=V_{DSmax} \times 0.8$	
$I_{GSS}$	Gate-to-Source Leakage Forward	-	-	300	nA	$V_{GS}=20\text{V}$	
$I_{GSS}$	Gate-to-Source Leakage Reverse	-	-	-300	nA	$V_{GS}=20\text{V}$	
$Q_g$	Total Gate Charge	-	260	390	nC	$I_D=70\text{A}$ , $V_{GS}=10\text{V}$ ,	
$Q_{gs}$	Gate-to-Source Charge	-	48	72	nC	$V_{DS}=V_{DSmax} \times 0.8$	
$Q_{gd}$	Gate-to-Drain ("Miller") Charge	-	138	210	nC		
$t_{d(on)}$	Turn-on Delay Time	IRFK3D250	-	40	-	ns	$V_{DD}=95\text{V}$ , $I_D=41\text{A}$ ,
		IRFK3F250	-	45	-	ns	
$t_r$	Rise Time	IRFK3D250	-	100	-	ns	$V_{GS}=10\text{V}$ ,
		IRFK3F250	-	125	-	ns	
$t_{d(off)}$	Turn-off Delay Time	IRFK3D250	-	160	-	ns	$R_{SOURCE}=3.3\Omega$
		IRFK3F250	-	210	-	ns	
$t_f$	Fall Time	IRFK3D250	-	50	-	ns	
		IRFK3F250	-	80	-	ns	
$L_{DS}$	Drain-to-Source Inductance	-	18	-	nH		
$C_{iss}$	Input Capacitance	-	9.0	-	nF	$V_{GS}=0\text{V}$ , $V_{DS}=25\text{V}$ ,	
$C_{oss}$	Output Capacitance	-	2.5	-	nF	$f=1.0\text{MHz}$	
$C_{res}$	Reverse Transfer Capacitance	-	0.7	-	nF		
	Linear Derating Factor	-	-	5	W/K		

## Source-Drain Diode Ratings and Characteristics

	Parameter	Min.	Typ.	Max.	Units	Test Conditions
$I_S$	Continuous Source Current (Body Diode)	-	-	70	A	
$I_{SM}$	Pulsed Source Current (Body Diode)	-	-	245	A	
$V_{SD}$	Diode Forward Voltage	-	-	2.0	V	$V_{GS}=0\text{V}$ , $I_S=70\text{A}$ , $T_C=25^\circ\text{C}$
$t_{rr}$	Reverse Recovery Time	9160	320	640	ns	$di/dt=400\text{A}/\mu\text{s}$ , $T_J=150^\circ\text{C}$
$Q_{rr}$	Reverse Recovered Charge	6.6	13.0	26.0	$\mu\text{C}$	$I_S=70\text{A}$

### Notes:

④ - Pulse Width  $\leq 300\mu\text{s}$ ; Duty cycle  $\leq 2\%$ .



# IRFK3D250, IRFK3F250

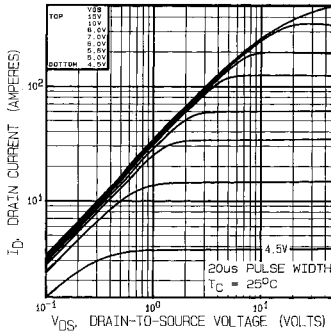


Fig 1. Typical Output Characteristics,  $T_C = 25^\circ\text{C}$

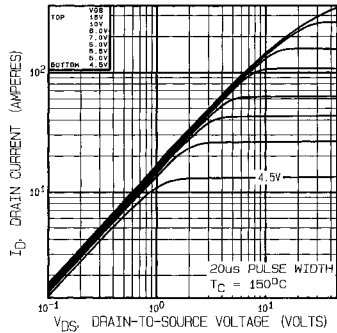


Fig 2. Typical Output Characteristics,  $T_C = 150^\circ\text{C}$

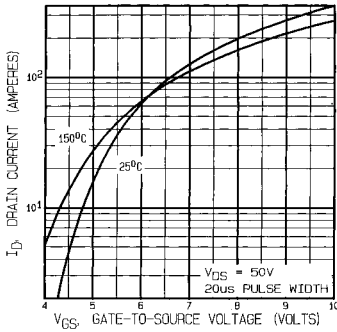


Fig 3. Typical Transfer Characteristics

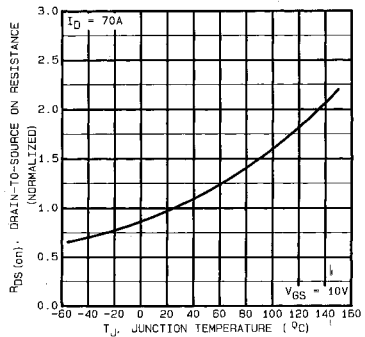
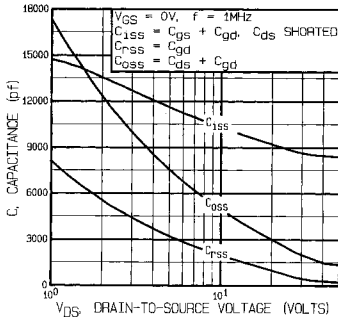
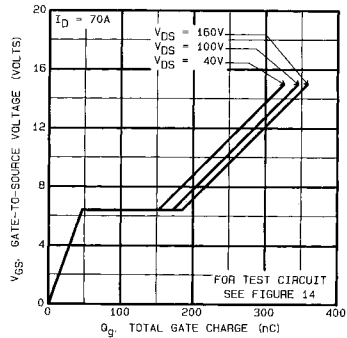


Fig 4. Normalized On-Resistance Vs. Temperature

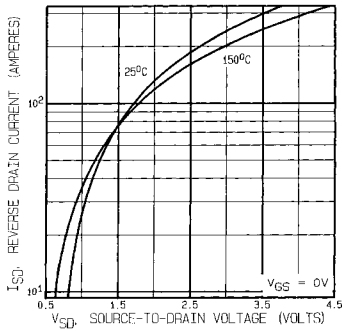
# IRFK3D250, IRFK3F250



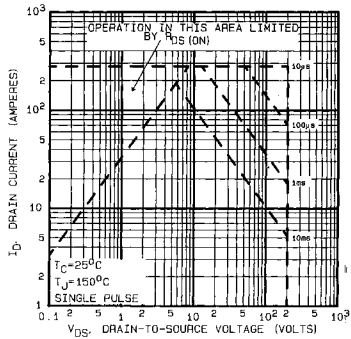
**Fig 5.** Typical Capacitance Vs. Drain-to-Source Voltage



**Fig 6.** Typical Gate Charge Vs. Gate-to-Source Voltage



**Fig 7.** Typical Source-Drain Diode Forward Voltage



**Fig 8.** Maximum Safe Operating Area

# IRFK3D250, IRFK3F250

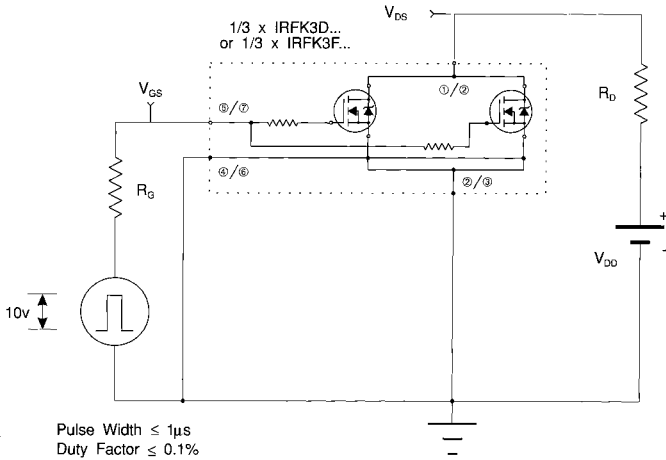


Fig 11a. Switching Time Test Circuit

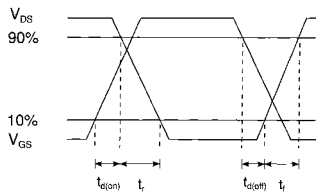


Fig 11b. Switching Time Waveforms



# IRFK3D250, IRFK3F250

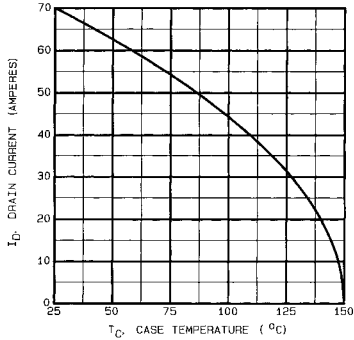


Fig 9. Maximum Drain Current Vs. Case Temperature

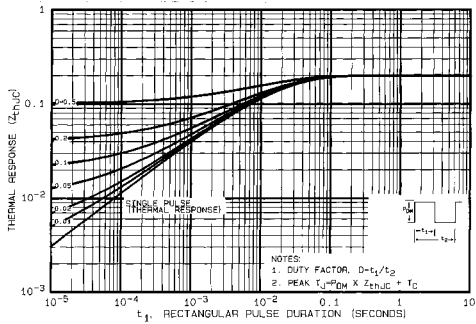
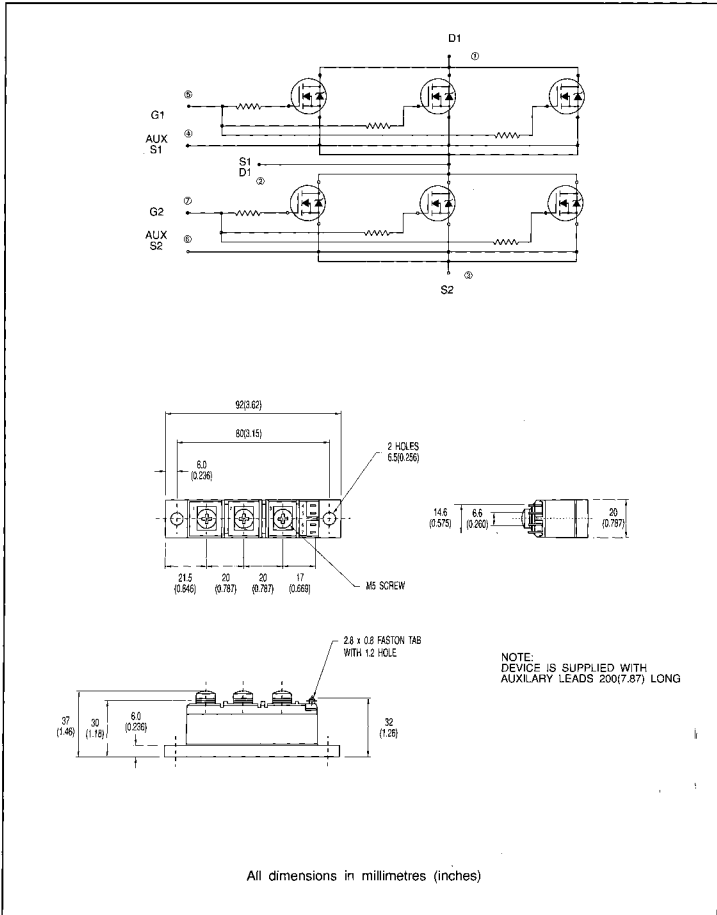


Fig 10. Maximum Effective Transient Thermal Impedance, Junction-to-Case



# IRFK3D250, IRFK3F250

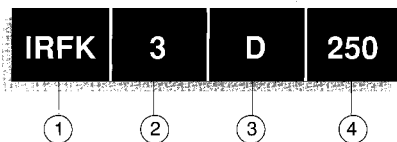
## Circuit Configuration and Outline



# IRFK3D250,IRFK3F250



## Part Numbering



1. - HEX-pak Module.
2. - Number of arms of bridge.
3. - D - Fast switching.  
- F - Oscillation resistant for sensitive applications.
4. - Voltage code:-
 

054	- 60V
150	- 100V
250	- 200V
350	- 400V
450	- 500V
C50	- 600V

**WORLD HEADQUARTERS:** 233 Kansas St., EL SEGUNDO, California 90245, USA. Tel:(213) 772-8000. Tlx:664464. Fax:(213) 772-9028  
**EUROPEAN HEADQUARTERS:** Hurst Green, OXTEd, Surrey RH16 9BB, UK. Tel:(0883) 713215. Tlx:95219. Fax:(0883) 714234.

**CANADA:** 101 Bentley St., Markham, ONTARIO L3R 3L1, Tel:(416)475-1887. Tlx:06-966-650. Fax:(416)475-8801  
**CZECHOSLOVAKIA:** Masarova 19/1565, Box 30, 149 00 PRAGUE. Tel:(2)752 8831. Fax:(2) 752 8831.  
**DENMARK:** P.O. Box 70, Kroghsbojvej 51, DK-2890 BAGSVAERD. Tel: (45) 44 37 71 50. Fax: (45) 44 37 71 52.  
**FRANCE:** 123 Rue de Petit Vaux, 91360 EPINAY sur ORGE. Tel:(1)64.54.83.29. Tlx:600943. Fax:(1)64.54.83.30.  
**FINLAND:** Bilikokisvagen 19, 02580 Spynndas St. Tel:(0) 262 8144. Fax: (0) 262 8150.  
**GERMANY:** Saalburgstr. 157, D-6360 BAD HOMBURG. Tel:(6)172 37068. Tlx:410404. Fax:(6)172 37065.  
**HUNGARY:** Szerviz Irtvan Park 15, H-1137 BUDAPEST. Tel:(1) 1298 922. Fax:(1) 1298 822.  
**HONG KONG:** 202 Peter Building, 60 Queens Road Central, HONG KONG. Tel:(85) 252 36355. Fax: (85) 284 52958.  
**ITALY:** Via Liguia 49, 10071 Borgaro, TORINO. Tel:(0)11470 14 84. Tlx:221257. Fax:(0)11470 42 90.  
 Via Zucca 8, 20017 PIno MILANO. Tel:(02)93 50 36 50. Fax:(02)93 50 36 55.  
 Via Arno 1, 40139 BOLOGNA. Tel:(05)149 93 07. Fax:(05)149 64 80.  
**INDIA:** 31 Greenacre, 5 Union Park, Khar (W), BOMBAY 400 052. Tel:(022)535026/533779/540242. Tlx:011-71481.  
**JAPAN:** K & H Bldg. 2F, 3-30-4 Nishi-Ikebukuro, Toshima-ku, TOKYO, Japan 171. Tel:(03)983 0641. Fax:(03)983 0642.  
**SINGAPORE:** HEX 10 01 Fortune Centre, 190 Middle Road, SINGAPORE 0718. Tel:(65)336 3922/337 4695/336 6286. Fax: (65)337 4692.  
**SWEDEN:** Box. 86, S-162 12 Vallingby 1, STOCKHOLM. Tel:(08)679035. Fax:(08)674242.  
**SWITZERLAND:** CH-8032 ZURICH, Kirchenweg 5. Tel:(01)386 6702/8866. Fax:(01)383 5109/2379.  
**U.S.A.:**  
**Central Zone:** 2401 Plum Grove Road, Suite 111, PALATINE, IL60067. Tel:(312)397-0002. Fax:(312)397-0114.  
**Eastern Zone:** 71 Grand Avenue, PALISADES PARK, NJ10760. Tel:(201)943-4554. Fax:(201)943-5754.  
**Southern Zone:** 900 Office Plaza Blvd., Suite 401, KISSIMMEE, FL32743. Tel:(407)933-2383. Fax:(407)933-2293.  
**Western Zone:** 222 Kansas Street, EL SEGUNDO, CA90245. Tel:(213)607-8896. Fax:(213)640-6533.

Sales Offices, Agents and Distributors in Major Cities throughout the World.

In the interest of product improvement INTERNATIONAL RECTIFIER reserves the right to change specifications at any time without notice.

MJW/192