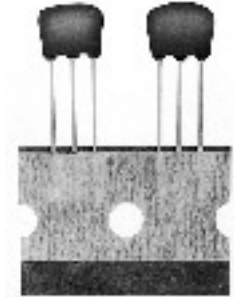
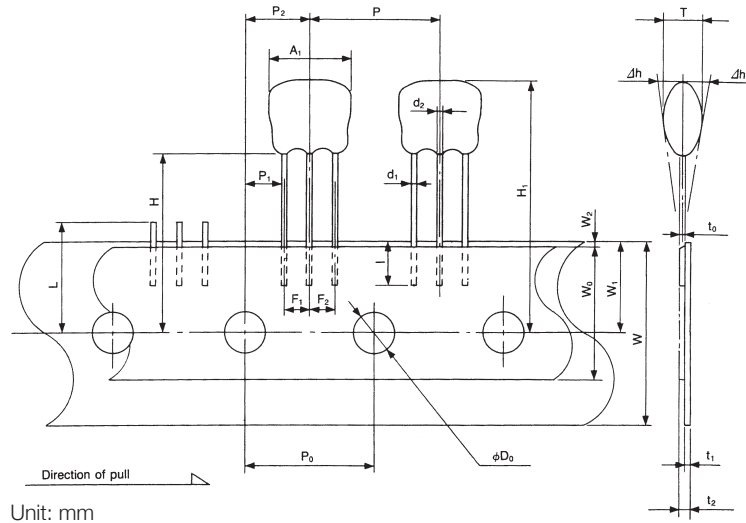


**Dimensions**


Marks	Dimensions
A <sub>1</sub>	9.0 max.
T	4.0 max.
d <sub>1</sub>	0.5±0.05
d <sub>2</sub>	0.5±0.05
t <sub>0</sub>	0.3±0.05
P	12.7±1.0
P <sub>0</sub>	12.7±0.3
P <sub>1</sub>	3.85±0.5

Marks	Dimensions
P <sub>2</sub>	6.35±1.3
F <sub>1</sub> , F <sub>2</sub>	2.5 <sup>+0.4</sup> <sub>-1.0</sub>
Δh	2.0 max.
W	18.0 <sup>+1.0</sup> <sub>-0.5</sub>
W <sub>0</sub>	13.0 <sup>+1.0</sup> <sub>-0.5</sub>
W <sub>1</sub>	9.0±0.5
W <sub>2</sub>	1.0 max.
H	18.0 <sup>+2</sup> <sub>0</sub>

Marks	Dimensions
H <sub>1</sub>	27.0 max.
l	3.0 min.
øD <sub>0</sub>	4.0±0.2
t <sub>2</sub>	1.5 min.
t <sub>1</sub>	0.6±0.3
L	11.0 max.

**STANDARD FILTERS SELECTION GUIDE**
**TYPE CFSKP 10.7 MHz**

TOKO Part Number	Bandwidth at 3dB (kHz)	Bandwidth at 20dB (kHz)	Insertion Loss (dB)	Spurious Response (dB)	Input/Output Impedance (Ω)
#SKP107M1-AE-10	280±50	650 max.	6.0 max.	30 min.	330/330
#SKP107M2-AE-20	230±50	600 max.	6.0 max.	40 min.	330/330
#SKP107M3-AE-20	180±40	520 max.	7.0 max.	40 min.	330/330
#SKP107M4-AE-20	150±40	400 max.	10.0 max.	40 min.	330/330



The information furnished by TOKO, Inc. is believed to be accurate and reliable. However, TOKO reserves the right to make changes or improvements in the design, specification or manufacture of its products without further notice. TOKO does not assume any liability arising from the application or use of any product or circuit described herein, nor for any infringements of patents or other rights of third parties which may result from the use of its products. No license is granted by implication or otherwise under any patent or patent rights of TOKO, Inc.