



**SHARP's New Line  
of MCUs and  
System-on-Chips**

**APPLICATIONS:**  
PDA • GPS • POS  
Networking  
Medical  
Test & Measurement  
Security

# LH79525 16/32-bit System-on-Chip with Color LCD Controller

## FEATURES

- ARM720T™ Core
  - High Performance (77.4 MHz)
  - 8KB cache
  - MMU
- 16KB On-chip SRAM
- 10/100 BaseT Ethernet MAC
- USB 2.0 Full Speed Device
- Clock and Power Management
  - Low Power Modes – Active, Standby, Sleep, Stop1, Stop2
- Color LCD Controller
  - 12-bit (4,096) Direct Mode Color
    - Up to VGA (800 × 600)
  - 8-bit (256) Direct or Palletized Color
    - Up to XGA (1,024 × 768)
  - 12-bit Video Bus
  - Supports STN, TFT, HR-TFT, AD-TFT
- Ten Input, 10-bit A/D Converter with Integrated Touch Screen Controller
- Four DMA Channels
- SDRAM Controller
- NAND Flash Support
- Serial Interfaces
  - Three 16C550 UARTs, with 9-bit capability
  - Classic IrDA (115 Kbit/s)
  - SSP
  - I<sup>2</sup>C
  - I<sup>2</sup>S Codec Interface
- External Bus Interface
  - Six Chip Selects Providing Glueless Interface to Off-Chip Memories and Peripherals
  - 24 Address Bits
  - 16 Data Bits

- Real Time Clock (RTC)
  - Operates from 32 kHz XTAL
- 72 GPIO, 8 GPI, 6 GPO
- Three 16-bit Counter/Timers with Capture/Compare/PWM Capability
- Watchdog Timer
- Low Voltage Detector
- JTAG Debug Interface and Boundary Scan
- 3.3 V Operating Voltage
- 5 V Tolerant I/O
- On-chip 3.3 V to 1.8 V Linear Regulator
- -40°C to +85°C Operating Temperature
- 176-pin LQFP Package

## DESCRIPTION

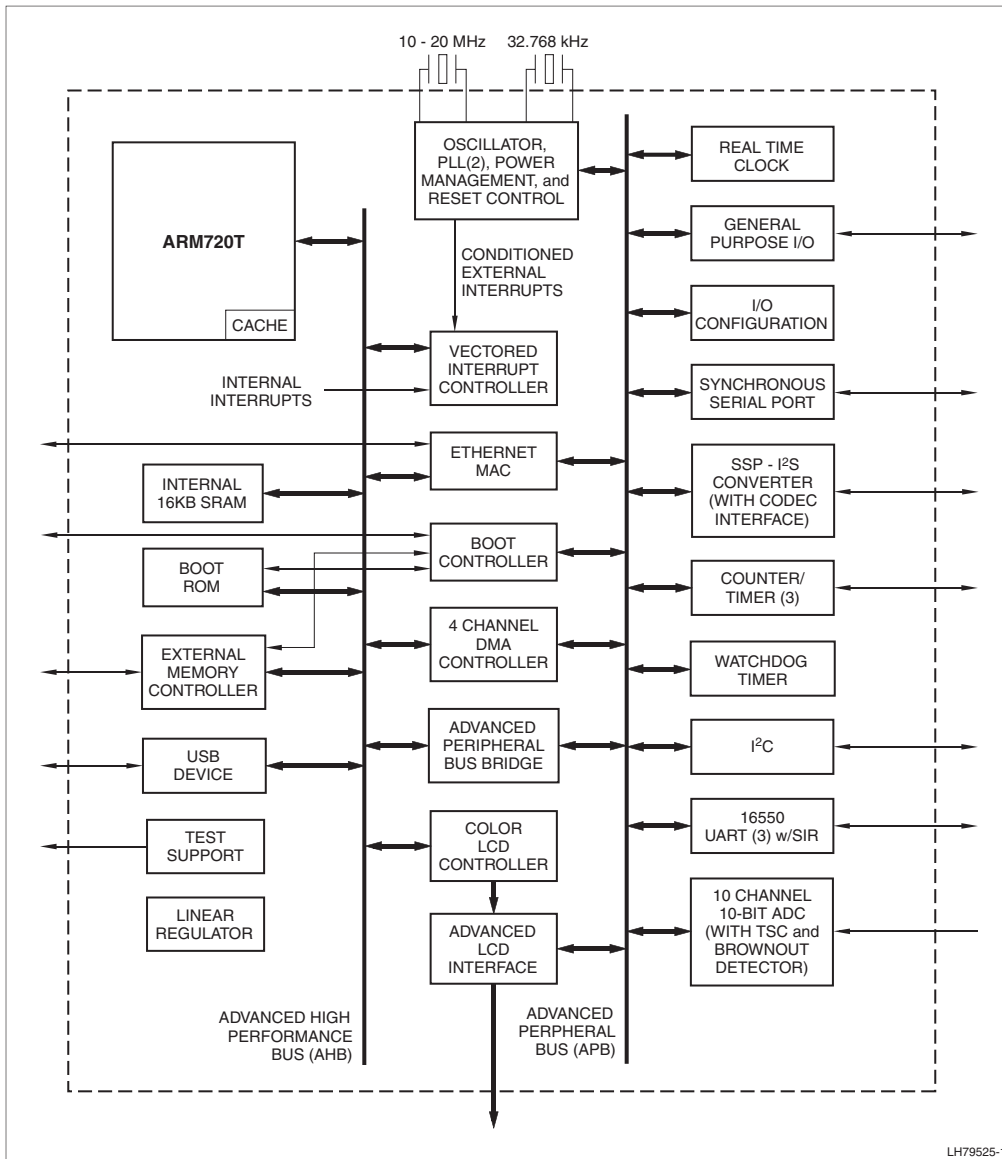
The LH79525 is a low cost microcontroller that utilizes the ARM720T core integrated with a wide variety of functions including the capability to control STN, color STN, TFT, HR-TFT, and AD-TFT displays with up to 4,096 colors. Other functions include: 16KB of on-chip SRAM, 10/100 BaseT Ethernet MAC, USB 2.0 Full Speed Device, three UARTs, SSP, I<sup>2</sup>C, I<sup>2</sup>S, three 16-bit Counter/Timers, Analog to Digital Converter with integrated touch screen controller, SDRAM Controller, Watchdog Timer, and Low Voltage Detector. The LH79525 operates up to 77.4 MHz at 3.3 V over the industrial temperature range of -40°C to +85°C and is offered in a 176-pin LQFP package.

SHARP's LH79525 design provides low power, exceptional performance, good flexibility, and great value in a 32-bit processor with a 16-bit external data bus.

# PRELIMINARY PRODUCT INFORMATION

# SHARP

## LH79525 BLOCK DIAGRAM



## SHARP<sup>®</sup>

### MICROELECTRONICS OF THE AMERICAS

#### Regional Sales Offices

##### North American Headquarters

Camas, WA  
Ph (360) 834-2500  
Fax (360) 834-8903

##### West

Huntington Beach, CA  
Ph (714) 903-4600  
Fax (714) 903-0295

San Diego, CA  
Ph (858) 597-0982  
Fax (858) 597-8701

San Jose, CA  
Ph (408) 436-4900  
Fax (408) 436-0924

##### East

Boca Raton, FL  
Ph (561) 347-8690  
Fax (561) 347-8692

Burlington, MA  
Ph (781) 270-7979  
Fax (781) 229-9117

Carey, NC  
Ph (919) 460-0695  
Fax (919) 460-0795

New York, NY  
Ph (212) 945-9410  
Fax (212) 945-9412

Pittsburgh, PA  
Ph (412) 381-1191  
Fax (412) 381-1192

##### Europe

SHARP Microelectronics Europe  
Hamburg, Germany  
Ph (49) 40-2376-2286  
Fax (49) 40-2376-2232

##### Asia

SHARP Corporation  
Osaka, Japan  
Ph (81) 6-6621-1221  
Fax (81) 6117-725300

Product Information: 1-800-642-0261

World Wide Website: <http://www.sharpsma.com>

Specifications are subject to change without notice. Suggested applications (if any) are for standard use; See Important Restrictions for limitations on special applications. See Limited Warranty for SHARP's product warranty. The Limited Warranty is in lieu, and exclusive of, all other warranties, express or implied. ALL EXPRESS AND IMPLIED WARRANTIES, INCLUDING THE WARRANTIES OF MERCHANTABILITY, FITNESS FOR USE AND FITNESS FOR A PARTICULAR PURPOSE, ARE SPECIFICALLY EXCLUDED. In no event will SHARP be liable, or in any way responsible, for any incidental or consequential economic or property damage.