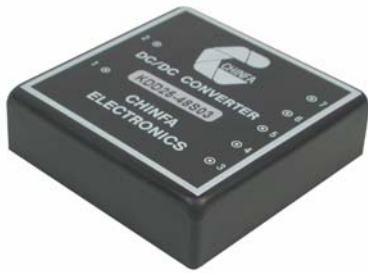


KDD25 SERIES

DC-DC CONVERTER 21.5 ~ 25W



KDD25 - 12 S 01

WATTAGE

12 : 9~18V IN
24 : 18~36V IN
48 : 36~72V IN

1: 5V OUT
2: 12V OUT
3: 15V OUT
5: 3.3V OUT

S : SINGLE OUTPUT

D : DUAL OUTPUT

MODEL LIST

MODEL NO.	INPUT VOLTAGE	OUTPUT WATTAGE	OUTPUT VOLTAGE	OUTPUT CURRENT	EFF. (MIN.)	CASE
Single Output Models						
KDD25 - 12S01	9~18 VDC	25 WATTS	+ 5 VDC	5000 mA	77%	B
KDD25 - 12S02	9~18 VDC	25 WATTS	+ 12 VDC	2100 mA	80%	B
KDD25 - 12S03	9~18 VDC	25 WATTS	+ 15 VDC	1700 mA	80%	B
KDD25 - 12S05	9~18 VDC	21.5 WATTS	+3.3 VDC	6500 mA	75%	B
KDD25 - 24S01	18~36 VDC	25 WATTS	+ 5 VDC	5000 mA	79%	B
KDD25 - 24S02	18~36 VDC	25 WATTS	+ 12 VDC	2100 mA	81%	B
KDD25 - 24S03	18~36 VDC	25 WATTS	+ 15 VDC	1700 mA	81%	B
KDD25 - 24S05	18~36 VDC	21.5 WATTS	+3.3 VDC	6500 mA	77%	B
KDD25 - 48S01	36~72 VDC	25 WATTS	+ 5 VDC	5000 mA	80%	B
KDD25 - 48S02	36~72 VDC	25 WATTS	+ 12 VDC	2100 mA	83%	B
KDD25 - 48S03	36~72 VDC	25 WATTS	+ 15 VDC	1700 mA	83%	B
KDD25 - 48S05	36~72 VDC	21.5 WATTS	+3.3 VDC	6500 mA	78%	B
Dual Output Models						
KDD25 - 12D01	9~18 VDC	25 WATTS	± 5 VDC	+4700/-300 mA	77%	B
KDD25 - 12D02	9~18 VDC	25 WATTS	± 12 VDC	+1800/-300 mA	80%	B
KDD25 - 12D03	9~18 VDC	25 WATTS	± 15 VDC	+1400/-300 mA	80%	B
KDD25 - 24D01	18~36 VDC	25 WATTS	± 5 VDC	+4700/-300 mA	79%	B
KDD25 - 24D02	18~36 VDC	25 WATTS	± 12 VDC	+1800/-300 mA	81%	B
KDD25 - 24D03	18~36 VDC	25 WATTS	± 15 VDC	+1400/-300 mA	81%	B
KDD25 - 48D01	36~72 VDC	25 WATTS	± 5 VDC	+4700/-300 mA	80%	B
KDD25 - 48D02	36~72 VDC	25 WATTS	± 12 VDC	+1800/-300 mA	83%	B
KDD25 - 48D03	36~72 VDC	25 WATTS	± 15 VDC	+1400/-300 mA	83%	B

FEATURES

- * 2:1 INPUT RANGE
- * ISOLATION INPUT AND OUTPUT 1.5KV DC
- * HIGH PERFORMANCE UP TO 84%
- * SHORT CIRCUIT PROTECTION
- * 2 YEARS WARRANTY



CHINFA ELECTRONICS IND., CO. LTD.
ISO 9001 Certified

www.chinfa.com
sales@chinfa.com

SPECIFICATION

All Specifications Typical At Nominal Line, Full Load, 25°C Unless Otherwise Noticed

GENERAL SPECIFICATION

- * Switching frequency: 80KHz
- * Isolation voltage: 1,500VDC
- * Isolation resistance: 1G Ω (min.)
- * Operating ambient temperature: -25 to +71°C
- * Storage temperature: -40 to +85°C
- * Max. Case temperature: 90°C
- * M.T.B.F.: 389,000Hrs at @ GF40, according to MIL-HDBK-217F
- * Cooling: Free air convection
- * Temperature coefficient: $\pm 0.02\%$ / °C
- * Dimension: 70 x 70 x 23mm

INPUT SPECIFICATIONS

- * Input voltage range / frequency: 9 ~ 18VDC for 12V
18 ~ 36VDC for 24V
36 ~ 72VDC for 48V
- * Input filter: Pi type
- * No load input current: 35mA for 12V in
30mA for 24V in
25mA for 12V in
- * Max. Input voltage: 20VDC for 12V in
40VDC for 24V in
75VDC for 48V in

OUTPUT SPECIFICATIONS

- * Output voltage accuracy: ± 1 at V_{o_nom}
- * Minimum load: No load for single output models
 $\pm 20\%$ at V_{o_nom} for dual output models
- * Line regulation: $\pm 1\%$ at V_{o_nom}
- * Load regulation: $\pm 2\%$ at V_{o_nom} for single output models
 $\pm 5\%$ at V_{o_nom} for dual output models
- * Ripple & noise: $V_{out} \times \pm 2\%$
- * Efficiency: Up to 83%, see model list
- * Derating: See table 1
- * Case material: Metal

CONTROL AND PROTECTION

- * Input reversed: Shunt diode use external fuse
- * Output short circuit: Continuous

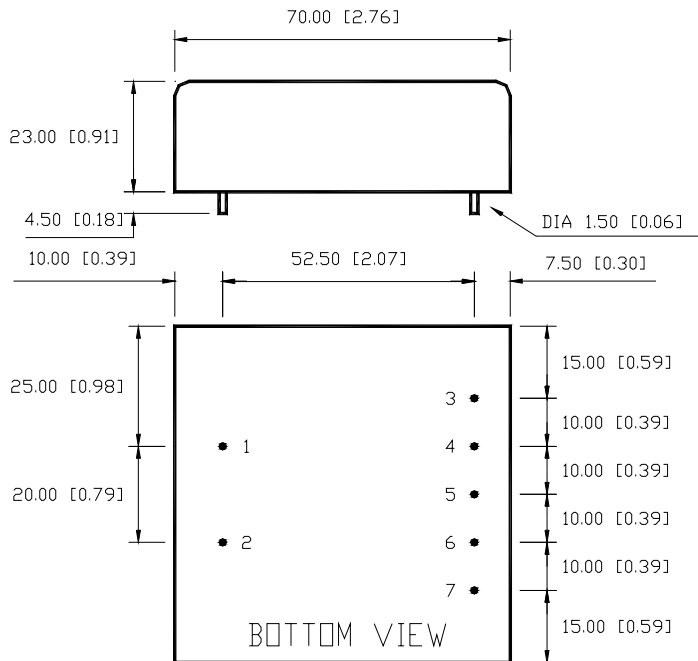


KDD25 SERIES

DC-DC CONVERTER 21.5 ~ 25W

MECHANISM & PIN CONFIGURATION

mm [inch]



PHYSICAL CHARACTERISTICS

CASE SIZE	70 x 70 x 23mm 2.76 x 2.76 x 0.91inches
CASE MATERIAL	Metal
WEIGHT	180 g

PIN ASSIGNMENT

PIN NO.	1	2	3	4	5	6	7
SINGLE	Vi+	Vi-	Vo+	Vo+	Vo-	Vo-	N.C.
DUAL	Vi+	Vi-	Vo+	Vo+	com	com	Vo-

Derating:

[TABLE 1]

