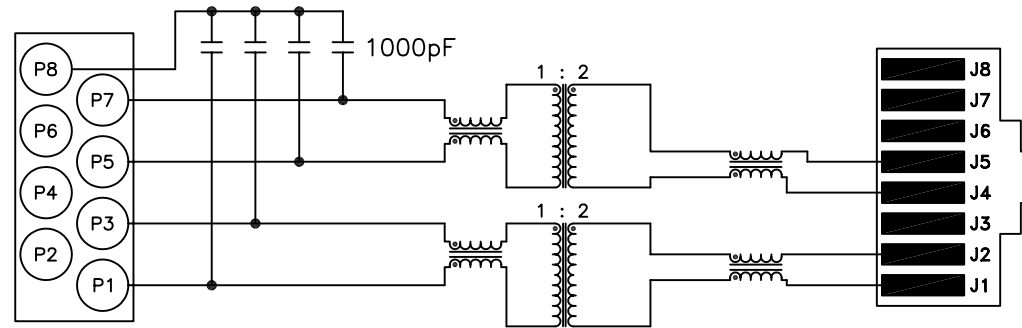


# TOP VIEW



## ELECTRICAL SPECIFICATIONS:

- 1.0 TURNS RATIO:  $(P3-P1) : (J2-J1)$  :  $1 : 2 \pm 3\%$   
 $(P7-P5) : (J5-J4)$  :  $1 : 2 \pm 3\%$
- 2.0 INDUCTANCE:  $(P3-P1) ; (P7-P5)$  : 1.2mH MIN. @ 0.1V, 100KHz
- 3.0 LEAKAGE INDUCTANCE:  $P3-P1$  (WITH  $J2$  AND  $J1$  SHORT) : 0.5uH MAX. @ 1MHz  
 $P7-P5$  (WITH  $J5$  AND  $J4$  SHORT) : 0.5uH MAX. @ 1MHz
- 4.0 INTERWINDING CAPACITANCE:  $(P3,P1)$  TO  $(J2,J1)$  : 35pf MAX @ 1MHz  
 $(P7,P5)$  TO  $(J5,J4)$  : 35pf MAX. @ 1MHz
- 5.0 COMMON MODE ATTENUATION: : -20dB TYP @ 5MHz TO 100MHz
- 6.0 HIPOT:  $(P7-P5)$  TO  $(J5-J4)$  : 1500VAC  
 $(P3-P1)$  TO  $(J2-J1)$  : 1500VAC
- 7.0 RETURN LOSS:  $(J1-J2)$  &  $(J4-J5)$  100 OHM REF.  
 51KHz TO 102KHz : 12dB MIN  
 102KHz TO 2.048MHz : 18dB MIN  
 2.048MHz TO 3.072MHz : 14dB MIN
- NOTE ; 25 OHMS CONNECTED TO PINS P1-P3 & P5-P7.
- 8.0 DC RESISTANCE:  $(P7-P5) ; (P3-P1)$  : .8 ohms Max.

## NOTES

1.0 PINS WITHOUT ELECTRICAL CONNECTION ARE OMITTED.

Bel Stewart Connector  
 1118 Susquehanna Trail, South  
 Glen Rock, Pa 17327-9199  
 717.234.7512

**MagJack®**

<http://www.stewartconnector.com>

THIS DRAWING AND THE SUBJECT MATTER SHOWN THEREON ARE CONFIDENTIAL AND PROPERTY OF BEL STEWART CONNECTOR AND SHALL NOT BE REPRODUCED, COPIED, OR USED IN ANY MANNER WITHOUT PRIOR WRITTEN CONTENT OF BEL STEWART CONNECTOR. THE SUBJECT MATTER MAY BE PATENTED OR A PATENT MAY BE PENDING.

SHEET

2

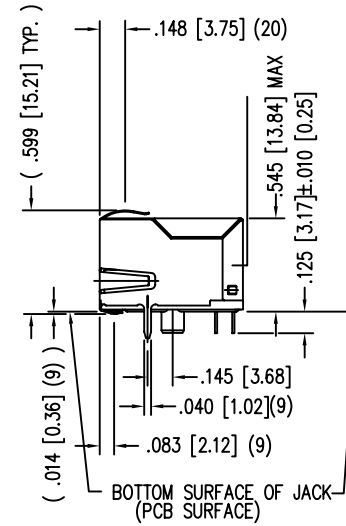
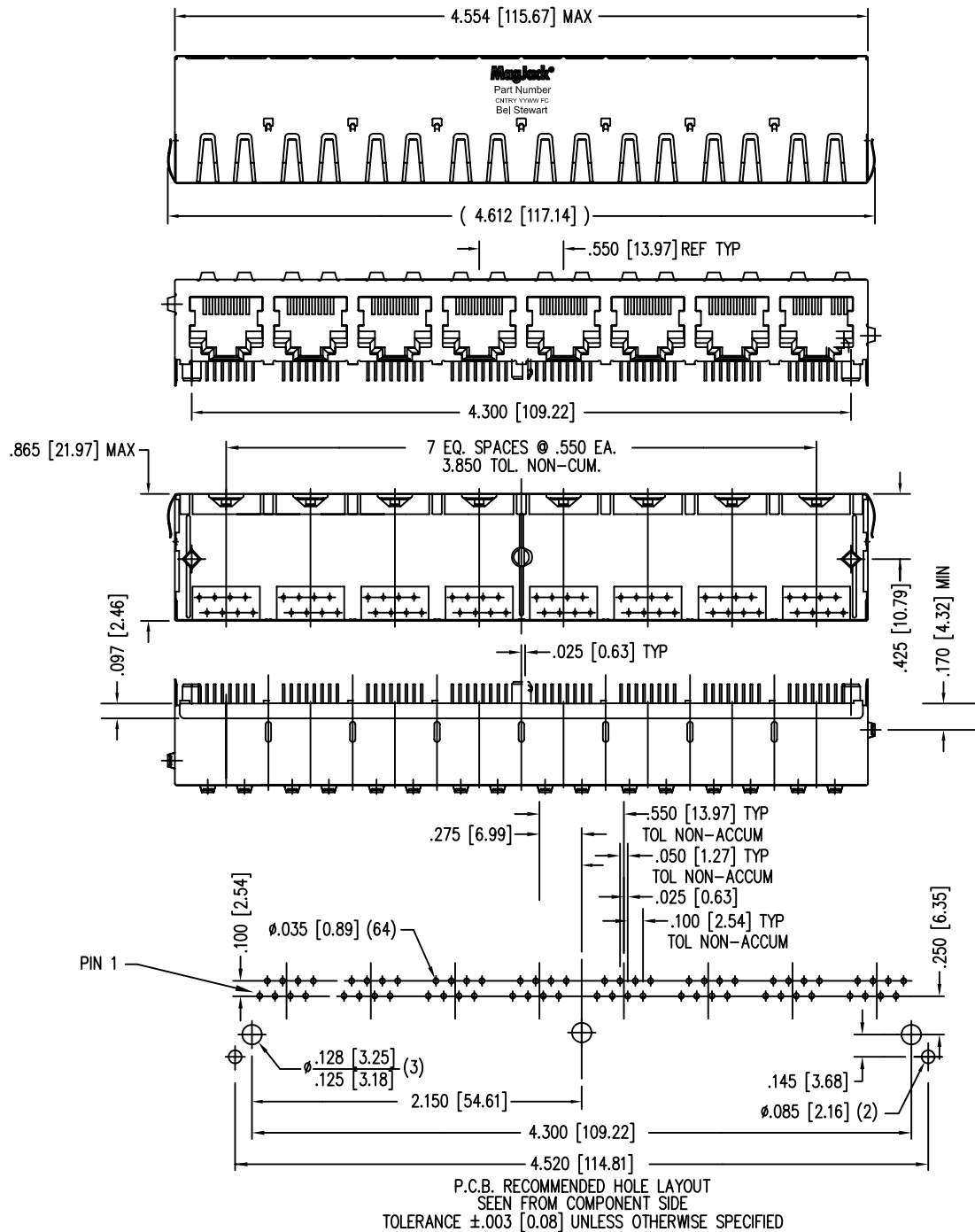
DRAWING NO.

C1008

REV.

01

8 PORT HARMONICA MagJack™



NOTES:

- CONNECTOR MATERIALS:  
HOUSING: THERMOPLASTIC UL94 V-0  
CONTACT/SHIELD: COPPER ALLOY  
SHIELD PLATING: NICKEL OR TIN  
CONTACT PLATING: SELECTIVE GOLD,  
50 MICRO-INCHES MIN. IN CONTACT AREA.
- PIN NOT ELECTRICALLY CONNECTED MAYBE OMITTED.  
SEE ELECTRICAL DRAWING FOR OMITTED PINS.
- TOLERANCES COMPLY WITH F.C.C. DIMENSION REQUIREMENTS.
- ALL TOLERANCES NOT OTHERWISE SPECIFIED TO BE ±.005 [0.13]
- REFLOW AND WAVE SOLDER COMPATIBLE-260°C FOR  
10 SECONDS MAX



Bel Stewart Connector

11118 Susquehanna Trail, South  
Glen Rock, Pa 17327-9199  
717.234.7512

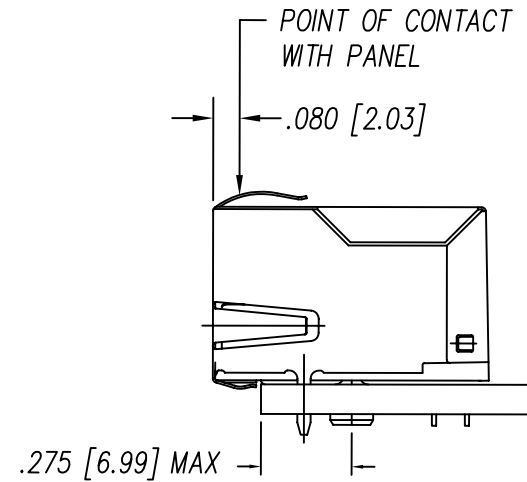
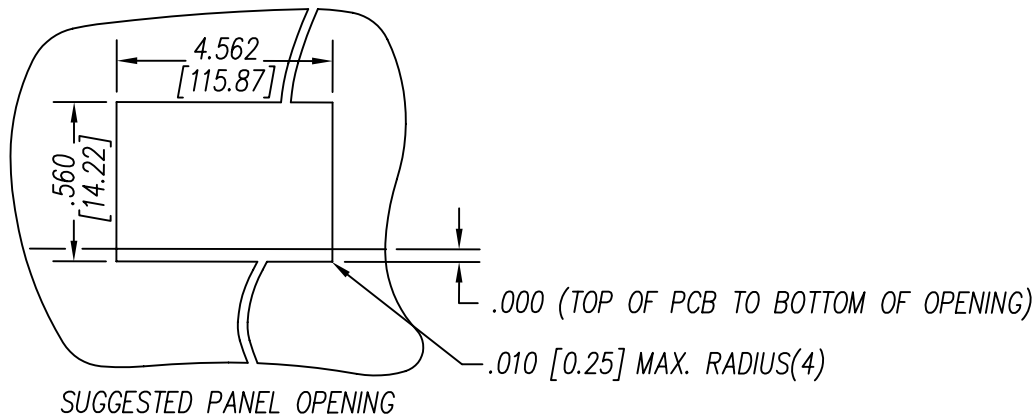
**MagJack®**

<http://www.stewartconnector.com>

THIS DRAWING AND THE SUBJECT MATTER SHOWN THEREON ARE CONFIDENTIAL AND PROPERTY OF BEL STEWART CONNECTOR AND SHALL NOT BE REPRODUCED, COPIED, OR USED IN ANY MANNER WITHOUT PRIOR WRITTEN CONTENT OF BEL STEWART CONNECTOR. THE SUBJECT MATTER MAY BE PATENTED OR A PATENT MAY BE PENDING.

SHEET 2 OF 3

DRAWING NO. SI-60060-F REV. 04



1. THE SUGGESTED PANEL OPENING IS INTENDED TO GIVE THE USER THE ABILITY TO HAVE REASONABLE JACK / PANEL CLEARANCES YET MAINTAIN RELIABLE GROUNDING CAPABILITY.
2. ALL TOLERANCES NOT OTHERWISE SPECIFIED TO BE  $\pm 0.005$  [0.13]

Bel Stewart Connector  
 11118 Susquehanna Trail, South  
 Glen Rock, Pa 17327-9199  
 717.234.7512

**MagJack®**

<http://www.stewartconnector.com>

THIS DRAWING AND THE SUBJECT MATTER SHOWN THEREON ARE CONFIDENTIAL AND PROPERTY OF BEL STEWART CONNECTOR AND SHALL NOT BE REPRODUCED, COPIED, OR USED IN ANY MANNER WITHOUT PRIOR WRITTEN CONTENT OF BEL STEWART CONNECTOR. THE SUBJECT MATTER MAY BE PATENTED OR A PATENT MAY BE PENDING.

SHEET 3 OF 3

DRAWING NO. SI-60060-F

REV. 04