

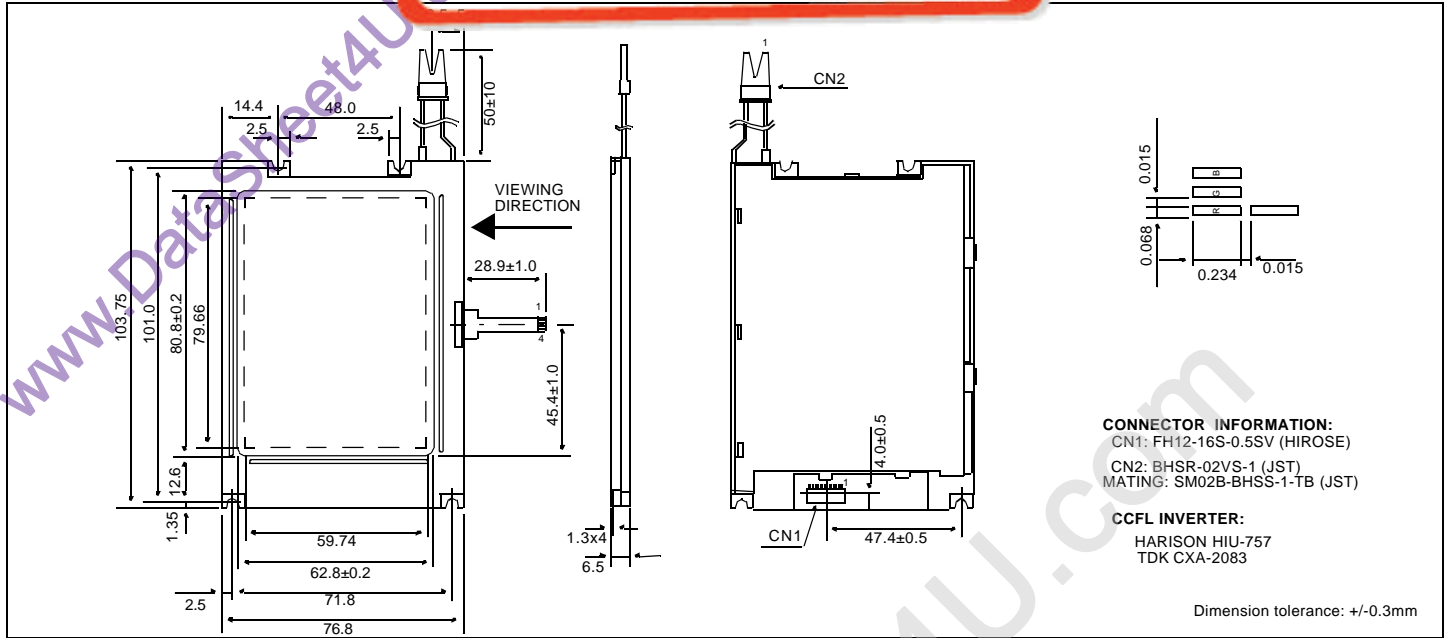
# HDM 3224TSC-S-L

## Dimensional Drawing

液晶之友 电话: 020-33819057

Http://www.DotFriends.com

320 x 240 Dots Color Graphics, Landscape, Small Size w/CCFL Backlight



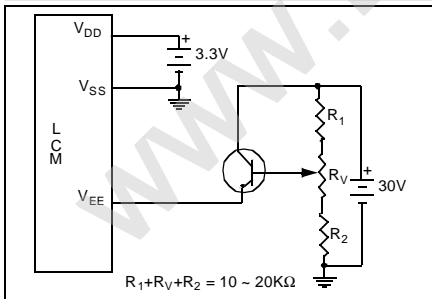
### Features

- Backlight.....CCFL
- Options.....Color RGB
- Normal/Extended Temperature
- Bottom Viewing
- Built-in Controller.....None

### Physical Data

- Module Size.....76.8W x 103.7H x 7.9T mm
- Viewing Area Size.....62.8W x 82.8H mm
- Dot Pitch.....0.249W x 0.083H mm
- Dot Size.....0.234W x 0.068H mm
- Weight.....65g

### Power Supply



### Electrical Characteristics (VDD=3.3±0.25V 25°C)

PARAMETER	SYM	CONDITION	MIN	TYP	MAX	UNIT
INPUT HIGH VOLTAGE	V <sub>IH</sub>	-	0.8 V <sub>DD</sub>	-	V <sub>DD</sub>	V
INPUT LOW VOLTAGE	V <sub>IL</sub>	-	0	-	0.2 V <sub>DD</sub>	V
SUPPLY VOLTAGE	V <sub>DD</sub>	-	3.0	3.3	3.6	V
	V <sub>L</sub>	V <sub>DD</sub> = 5.0V	23.7	24.0	24.3	V
DRIVE METHOD	1/240 DUTY					

### Absolute Maximum Ratings

PARAMETER	SYMBOL	MIN	MAX	UNIT
SUPPLY VOLTAGE	V <sub>DD</sub> -V <sub>SS</sub>	-0.3	7.0	V
SUPPLY VOLTAGE FOR LCD	V <sub>EE</sub>	0	30.0	V
INPUT VOLTAGE	V <sub>IN</sub>	-0.3	7.0	V
OPERATING TEMPERATURE	T <sub>OP</sub>	0	50	°C
STORAGE TEMPERATURE	T <sub>STG</sub>	-20	60	°C

### Pin Connections

PIN NO.	SYMBOL	LEVEL	FUNCTION
<b>DATA CONNECTOR</b>			
1	D7	H/L	Data Bus
2	D6	H/L	
3	D5	H/L	
4	D4	H/L	
5	D3	H/L	
6	D2	H/L	
7	D1	H/L	
8	D0	H/L	
9	V <sub>SS</sub>	0V	Ground
10	V <sub>DD</sub>	3.3V	Power supply for logic
11	DISPOFF	H/L	H= On, L= Off
12	CP	H/L	Data shift
13	LOAD	H/L	Data Latch
14	FRAME	H	First Line Marker
15	V <sub>SS</sub>	0V	Ground
16	V <sub>EE</sub>	-	Operating voltage for LC
<b>CCFL CONNECTOR</b>			
1	V <sub>CF</sub>	-	Power supply for CCFL
2	GND	-	Ground
<b>TOUCH SCREEN CONNECTOR</b>			
1	Y2	TOP	
2	X2	RIGHT	
3	Y1	BOTTOM	
4	X1	LEFT	