



**International  
Semiconductor, Inc.**

## 100 mA SILICON CARTRIDGE RECTIFIERS

- SMALL SIZE MOLDED PACKAGE
- PRV 8,000 TO 50,000 VOLTS
- FAST RECOVERY (HVCR SERIES)
- LOW LEAKAGE



ISI Type No.	Peak Reverse Voltage, PRV (Volts)	Max. Fwd. Voltage Drop at 25°C and 100mA $V_F$ (Volts)	Length "L" FIG. 3
STANDARD RECOVERY			
HVC08	8,000	13	1.00
HVC10	10,000	13	1.00
HVC12	12,000	13	1.00
HVC15	15,000	20	1.63
HVC20	20,000	26	2.13
HVC25	25,000	33	2.63
HVC30	30,000	40	3.13
HVC35	35,000	46	3.63
HVC40	40,000	53	4.13
HVC45	45,000	60	4.63
HVC50	50,000	66	5.13
200 NANOSECOND RECOVERY FIG. 4			
HVC08R	8,000	20	1.00
HVC10R	10,000	20	1.00
HVC12R	12,000	20	1.00
HVC15R	15,000	30	1.63
HVC20R	20,000	40	2.13
HVC25R	25,000	50	2.63
HVC30R	30,000	60	3.13
HVC35R	35,000	70	3.63
HVC40R	40,000	80	4.13
HVC45R	45,000	90	4.63
HVC50R	50,000	100	5.13

ELECTRICAL CHARACTERISTICS at $T_A = 25^\circ\text{C}$ Unless Otherwise Specified	HVC SERIES STANDARD RECOVERY
Max. DC Reverse Current @ PRV and $25^\circ\text{C}$ , $I_R$	2 $\mu\text{A}$
Max. DC Reverse Current @ PRV and $100^\circ\text{C}$ , $I_R$	100 $\mu\text{A}$
Ambient Operating Temperature Range, $T_A$	$-55^\circ\text{C}$ to $+125^\circ\text{C}$
Storage Temperature Range, $T_{STG}$	$-55^\circ\text{C}$ to $+150^\circ\text{C}$
Max. One-Half Cycle Surge Current, $I_{SM}$ (Surge) @ 60 Hz	10 Amps
Forward Current Repetitive Peak, $I_{FM}$	3 Amps

ELECTRICAL CHARACTERISTICS at $T_A = 25^\circ\text{C}$ Unless Otherwise Specified	HVC SERIES FAST RECOVERY
Max. DC Reverse Current @ PRV and $25^\circ\text{C}$ , $I_R$	2 $\mu\text{A}$
Max. DC Reverse Current @ PRV and $100^\circ\text{C}$ , $I_R$	100 $\mu\text{A}$
Max. Reverse Recovery Time, $t_{rr}$ (Fig. 4)	200 nanosec
Ambient Operating Temperature Range, $T_A$	$-55^\circ\text{C}$ to $+125^\circ\text{C}$
Storage Temperature Range, $T_{STG}$	$-55^\circ\text{C}$ to $+150^\circ\text{C}$
Max. One-Half Cycle Surge Current, $I_{SM}$ (Surge) @ 60 Hz	10 Amps
Forward Current Repetitive Peak, $I_{FM}$	3 Amps

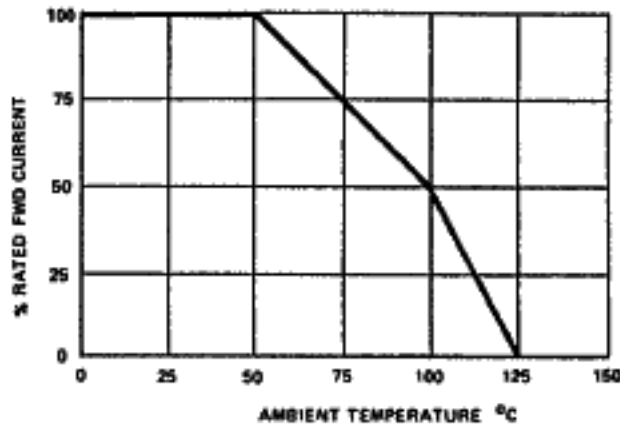
ISI reserves the right to change these specifications at any time without notice.

**Corporate Offices:**  
727 Raritan Road, Suite 203  
Clark, NJ 07066  
Phone (908) 396-0322 FAX (908) 396-0410

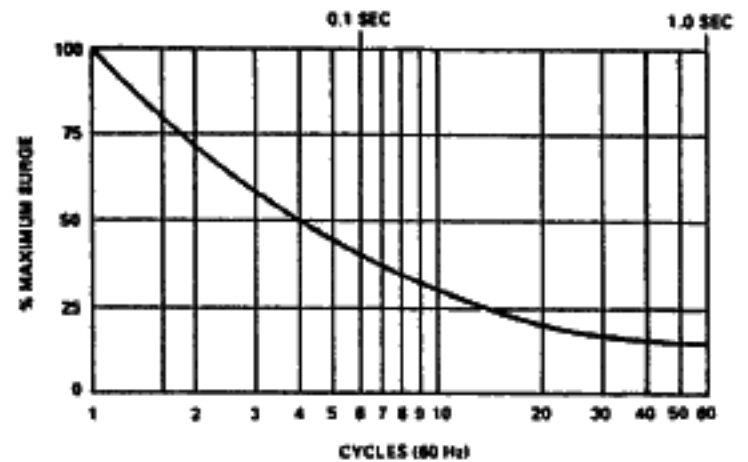
**Sales Office:**  
574 E. Alamo, #40  
Chandler, AZ 85225  
Phone (602) 497-8172 FAX (602) 497-8173



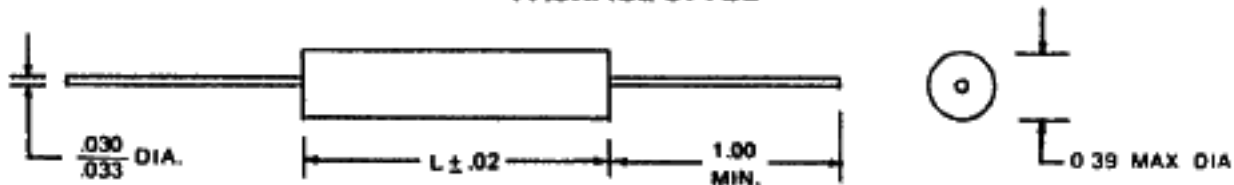
**FIG. 1  
OUTPUT CURRENT vs. AMBIENT TEMPERATURE**



**FIG. 2  
NON-REPETITIVE SURGE CURRENT RATINGS**



**FIG. 3  
PACKAGE STYLE**



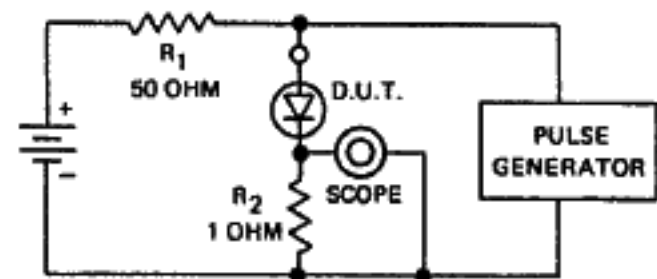
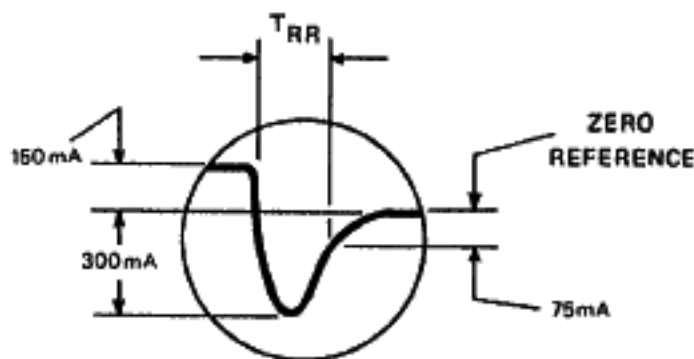
ALL DIMENSIONS IN INCHES

Maximum lead and terminal temperature for soldering, 3/8 inch from case, 5 seconds at 250°C.

**TEST CIRCUIT**

**FIG. 4**

**TYPICAL REVERSE RECOVERY WAVEFORM**



R<sub>1</sub>, R<sub>2</sub> NON-INDUCTIVE RESISTORS  
PULSE GENERATOR - HEWLETT PACKARD 214A OR EQUIV.  
1KC REP. RATE, 10 μ SEC. PULSE WIDTH  
ADJUST PULSE AMPLITUDE FOR PEAK I<sub>R</sub>

Reverse recovery time measured on individual rectifiers prior to assembly.

**Corporate Offices:**  
727 Raritan Road, Suite 203  
Clark, NJ 07066  
Phone (908) 396-0322 FAX (908) 396-0410

**Sales Office:**  
574 E. Alamo, #40  
Chandler, AZ 85225  
Phone (602) 497-8172 FAX (602) 497-8173