

BOARD SPACERS

BS SERIES

MATERIAL

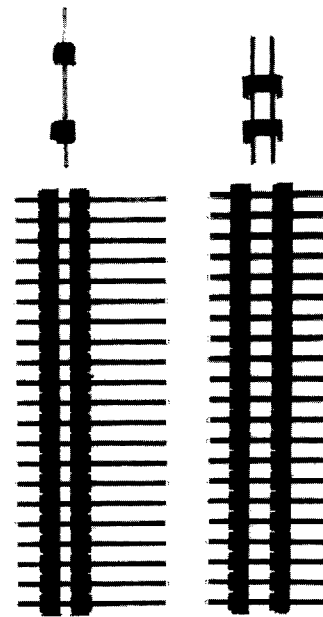
Insulator: Black PBT (UL 94V-0)
Contact: Copper Alloy
Contact Plating: Gold or Tin Over Nickel (see "Plating Option" below)

SPECIFICATIONS

Current Rating: 3A
Insulator Resistance: 5000 M Ω Min
Contact Resistance: 10 m Ω
Voltage Rating: 500V AC
Operating Temperature: -55°C - +105°C

FEATURES

- ♦ Allows custom design of specific board spacer requirements
- ♦ Side and end stackable (on broken edges)
- ♦ Breakable, with notches for ease
- ♦ Used to maintain the dimensions between two PC boards
- ♦ Provides a means of electronically connecting two discrete boards
- ♦ Supplied with standoffs, which facilitate post solder cleaning



HOW TO ORDER:



1. **SERIES**
BS = Board Spacers

4. **PLATING OPTION**

T = Tin

G = Full Gold Flash

G15 = Full Gold, 15 μ "

G30 = Full Gold, 30 μ "

SG = Selective Gold Flash

SG15 = Selective Gold, 15 μ "

SG30 = Selective Gold, 30 μ "

2. **ROW OPTION**

1 = Single Row

2 = Dual Row

5. **PIN LENGTH OPTION***

A = Solder Tail Length = _____ mm

B = Middle Length = _____ mm

C = Contact Length = _____ mm

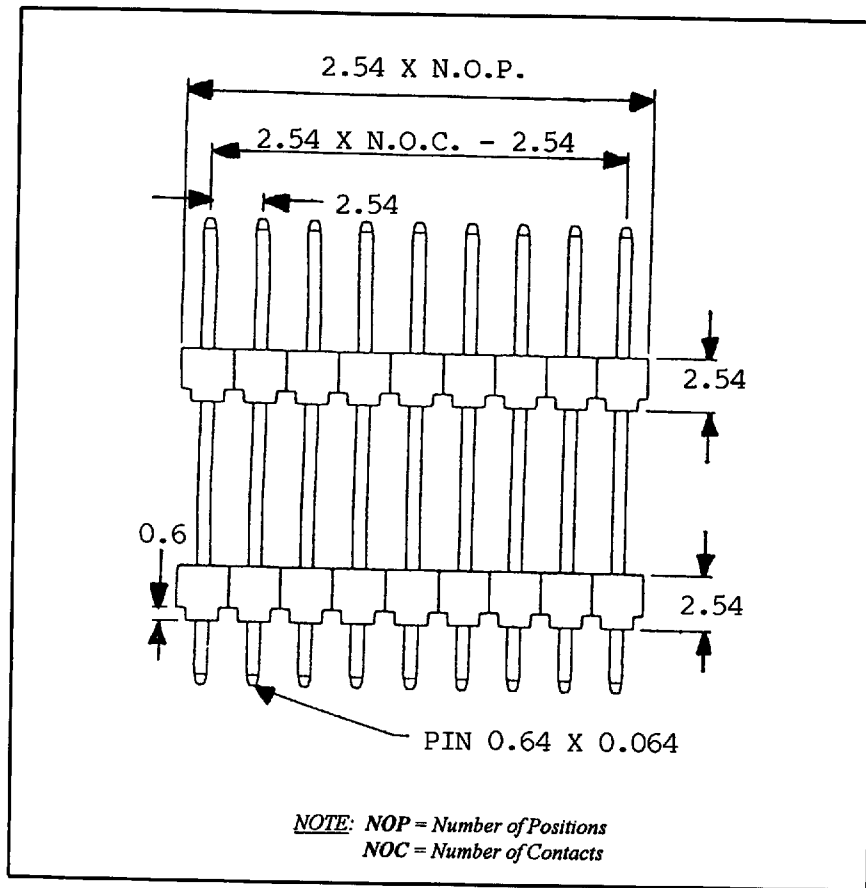
** Please fill out specifics for 5, but contact factory for availability and assigned number code*

3. **POSITION**

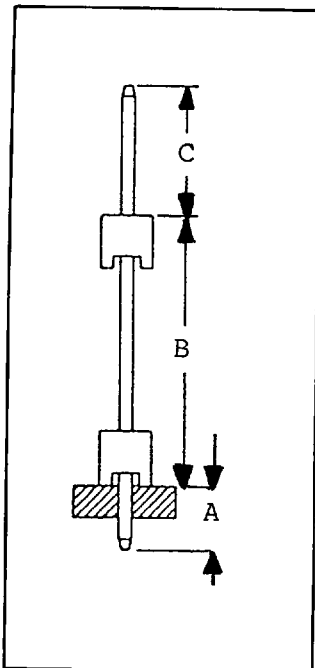
Single Row = 01 through 40

Dual Row = 02 through 80

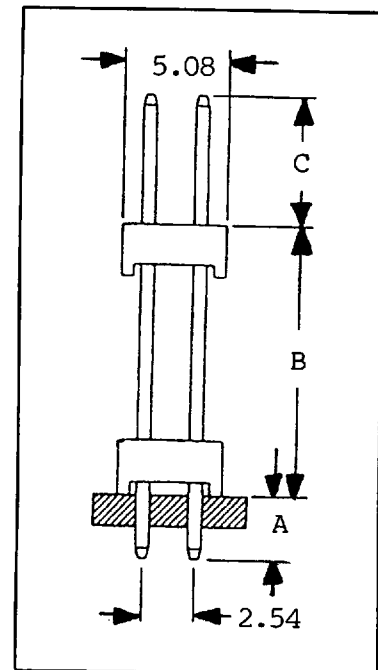
SPECIFICATIONS:



SINGLE ROW



DUAL ROW



ENGINEERS: For detailed Data Sheets, including *tolerances*, see pages 157 & 159 or call us!