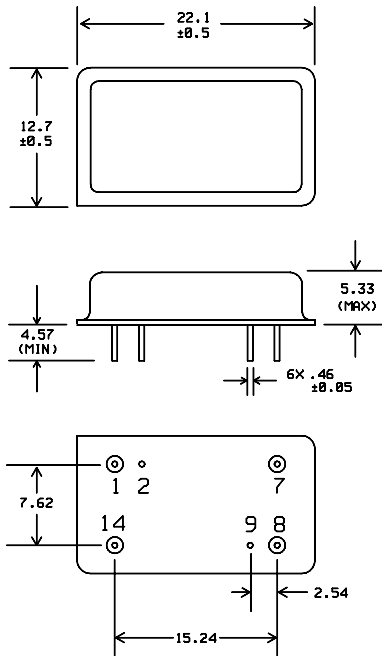






**PACKAGE OUTLINE**



**Units:** mm

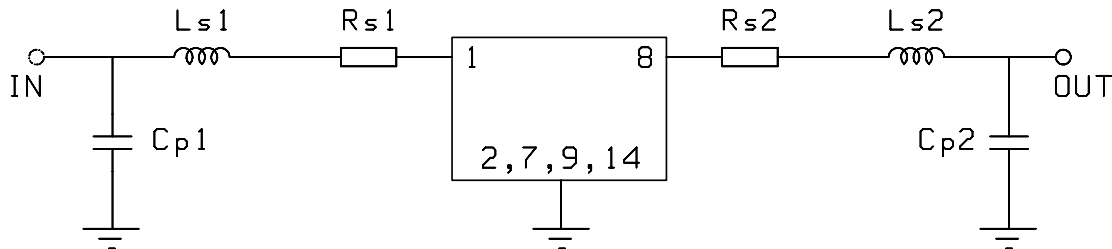
**Pin Configuration:**

Input: 1

Output: 8

Ground: 2,7,9,14

**MATCHING CIRCUIT**



Typical component values:

$Ls1 = 43 \text{ nH}$   
 $Cp1 = 33 \text{ pF}$   
 $Rs1 = 10 \text{ ohm}$

$Ls2 = 47 \text{ nH}$   
 $Cp2 = 33 \text{ pF}$   
 $Rs2 = 7.5 \text{ ohm}$

(Minimum inductor Q = 40)

**Notes**

- Recommend use of 2% matching components..
- Tuning values shown are for reference only. Optimum values may change depending upon board layout.

ISO 9001  
Registered