

## General Description

The AAT1123 SwitchReg™ is a member of AnalogicTech's Total Power Management IC™ (TPMIC™) product family. It is a 1MHz step-down converter with an input voltage range of 2.7V to 5.5V and output as low as 0.6V. Its low supply current, small size, and high switching frequency make the AAT1123 the ideal choice for portable applications.

The AAT1123 is available in either a fixed version with internal feedback or a programmable version with external feedback resistors. It can deliver up to 600mA of load current while maintaining a low 25µA no load quiescent current. The 1MHz switching frequency minimizes the size of external components while keeping switching losses low. The AAT1123 feedback and control delivers excellent load regulation and transient response with a small output inductor and capacitor.

The AAT1123 is designed to maintain high efficiency throughout the operating range and provides fast turn-on time.

The AAT1123 is available in a space-saving 2.0x2.1mm SC70JW-8 package and is rated over the -40°C to +85°C temperature range.

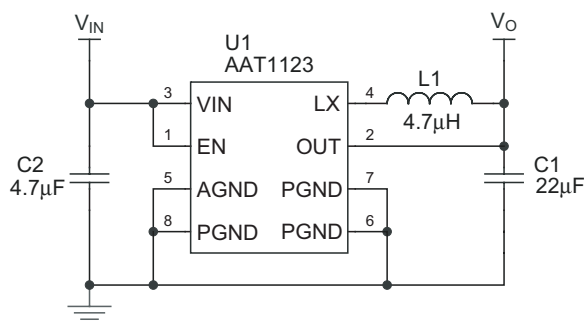
## Features

- $V_{IN}$  Range: 2.7V to 5.5V
- $V_{OUT}$  Adjustable Down to 0.6V  
— Fixed or Adjustable Version
- Fast Turn-On Time (100µs Typical)
- 25µA No Load Quiescent Current
- Up to 97% Efficiency
- Output Current Up to 600mA
- 1MHz Switching Frequency
- Soft Start
- Over-Temperature Protection
- Current Limit Protection
- 100% Duty Cycle Low-Dropout Operation
- 0.1µA Shutdown Current
- SC70JW-8 Package
- Temperature Range: -40°C to +85°C

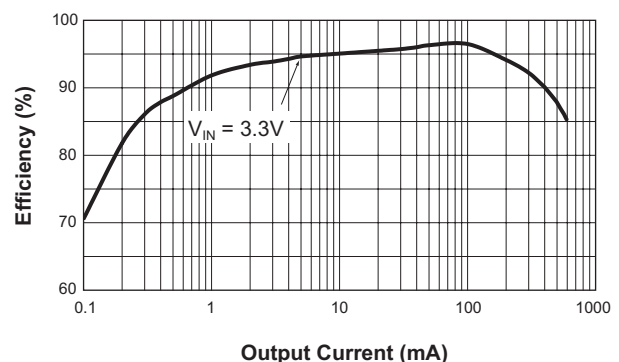
## Applications

- Cellular Phones
- Digital Cameras
- Handheld Instruments
- Microprocessor / DSP Core / IO Power
- PDAs and Handheld Computers
- USB Devices

## Typical Application (Fixed Output Voltage)



**AAT1123 Efficiency**  
 $(V_{OUT} = 2.5V; L = 10\mu H)$

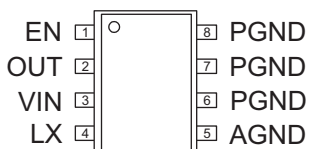


## Pin Descriptions

| Pin #   | Symbol | Function  |
|---------|--------|---|
| 1       | EN     | Enable pin.   |
| 2       | OUT    | Feedback input pin. This pin is connected either directly to the converter output or to an external resistive divider for an adjustable output. |
| 3       | VIN    | Input supply voltage for the converter.   |
| 4       | LX     | Switching node. Connect the inductor to this pin. It is internally connected to the drain of both high- and low-side MOSFETs.                   |
| 5       | AGND   | Non-power signal ground pin.  |
| 6, 7, 8 | PGND   | Main power ground return pin. Connect to the output and input capacitor return.   |

## Pin Configuration

**SC70JW-8**  
(Top View)



### **Absolute Maximum Ratings<sup>1</sup>**

| Symbol     | Description                                      | Value               | Units |
|------------|--|---------------------|-------|
| $V_{IN}$   | Input Voltage GND                                | 6.0                 | V     |
| $V_{LX}$   | $L_X$ to GND                                     | -0.3 to $V_P + 0.3$ | V     |
| $V_{OUT}$  | OUT to GND                                       | -0.3 to $V_P + 0.3$ | V     |
| $V_{EN}$   | EN to GND  | -0.3 to 6.0         | V     |
| $T_J$      | Operating Junction Temperature Range             | -40 to 150          | °C    |
| $T_{LEAD}$ | Maximum Soldering Temperature (at leads, 10 sec) | 300                 | °C    |

### **Thermal Information**

| Symbol        | Description                                | Value | Units |
|---------------|--|-------|-------|
| $P_D$         | Maximum Power Dissipation (SC70JW-8)       | 625   | mW    |
| $\theta_{JA}$ | Thermal Resistance <sup>2</sup> (SC70JW-8) | 160   | °C/W  |

1. Stresses above those listed in Absolute Maximum Ratings may cause permanent damage to the device. Functional operation at conditions other than the operating conditions specified is not implied. Only one Absolute Maximum Rating should be applied at any one time.

2. Mounted on an FR4 board.

## Electrical Characteristics<sup>1</sup>

$T_A = -40^{\circ}\text{C}$  to  $+85^{\circ}\text{C}$ , unless otherwise noted. Typical values are  $T_A = 25^{\circ}\text{C}$ ,  $V_{IN} = 3.6\text{V}$ .

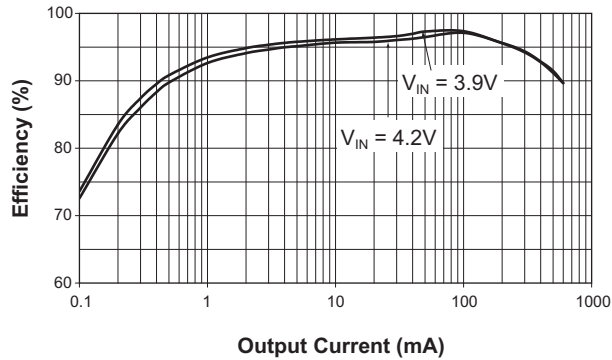
| Symbol                     | Description                          | Conditions   | Min  | Typ  | Max  | Units              |
|----------------------------|--------------------------------------|--|------|------|------|--------------------|
| <b>Step-Down Converter</b> |                                      |  |      |      |      |                    |
| $V_{IN}$                   | Input Voltage                        |  | 2.7  |      | 5.5  | V                  |
| $V_{UVLO}$                 | UVLO Threshold                       | $V_{IN}$ Rising  |      |      | 2.6  | V                  |
|                            |                                      | Hysteresis   |      | 100  |      | mV                 |
|                            |                                      | $V_{IN}$ Falling   | 1.8  |      |      | V                  |
| $V_{OUT}$                  | Output Voltage Tolerance             | $I_{OUT} = 0$ to $600\text{mA}$ ,<br>$V_{IN} = 2.7\text{V}$ to $5.5\text{V}$ | -3.5 |      | +3.5 | %                  |
| $V_{OUT}$                  | Output Voltage Range                 | Fixed Output Version   | 0.6  |      | 4.0  | V                  |
|                            |                                      | Adjustable Output Version <sup>2</sup>                                       | 0.6  |      | 2.5  |                    |
| $I_Q$                      | Quiescent Current                    | No Load, 0.6V Adjustable Version   |      | 25   | 50   | $\mu\text{A}$      |
| $I_{SHDN}$                 | Shutdown Current                     | EN = AGND = PGND   |      |      | 1.0  | $\mu\text{A}$      |
| $I_{OUT\_X}$               | Maximum Load Current                 |  | 600  |      |      | mA                 |
| $R_{DS(ON)H}$              | High Side Switch On Resistance       |  |      | 0.45 |      | $\Omega$           |
| $R_{DS(ON)L}$              | Low Side Switch On Resistance        |  |      | 0.40 |      | $\Omega$           |
| $I_{LXLEAK}$               | LX Leakage Current                   | $V_{IN} = 5.5\text{V}$ , $V_{LX} = 0$ to $V_{IN}$ ,<br>EN = GND              |      |      | 1    | $\mu\text{A}$      |
| $\Delta V_{Linereg}$       | Line Regulation                      | $V_{IN} = 2.7\text{V}$ to $5.5\text{V}$                                      |      |      | 0.5  | %/V                |
| $V_{OUT}$                  | Out Threshold Voltage Accuracy       | 0.6V Output, No Load<br>$T_A = 25^{\circ}\text{C}$                           | 591  | 600  | 609  | mV                 |
| $I_{OUT}$                  | Out Leakage Current                  | 0.6V Output  |      |      | 0.2  | $\mu\text{A}$      |
| $R_{OUT}$                  | Out Impedance                        | >0.6V Output   | 250  |      |      | $\text{k}\Omega$   |
| $T_S$                      | Start-Up Time                        | From Enable to Output Regulation   |      | 100  |      | $\mu\text{s}$      |
| $F_{OSC}$                  | Oscillator Frequency                 | $T_A = 25^{\circ}\text{C}$   | 0.7  | 1.0  | 1.5  | MHz                |
| $T_{SD}$                   | Over-Temperature Shutdown Threshold  |  |      | 140  |      | $^{\circ}\text{C}$ |
| $T_{HYS}$                  | Over-Temperature Shutdown Hysteresis |  |      | 15   |      | $^{\circ}\text{C}$ |
| <b>EN</b>                  |                                      |  |      |      |      |                    |
| $V_{EN(L)}$                | Enable Threshold Low                 |  |      |      | 0.6  | V                  |
| $V_{EN(H)}$                | Enable Threshold High                |  | 1.4  |      |      | V                  |
| $I_{EN}$                   | Input Low Current                    | $V_{IN} = V_{FB} = 5.5\text{V}$  | -1.0 |      | 1.0  | $\mu\text{A}$      |

1. The AAT1123 is guaranteed to meet performance specifications over the  $-40^{\circ}\text{C}$  to  $+85^{\circ}\text{C}$  operating temperature range and is assured by design, characterization, and correlation with statistical process controls.

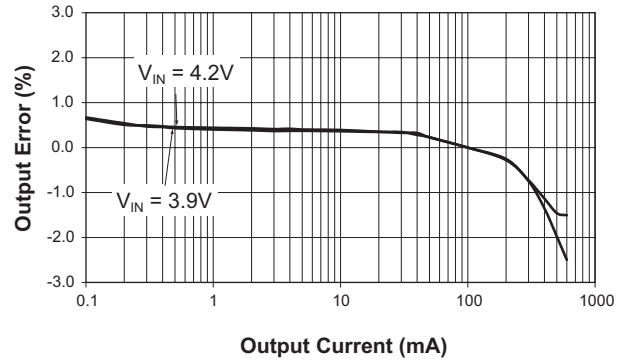
2. For adjustable version with higher than 2.5V output, please consult your AnalogicTech representative.

## Typical Characteristics

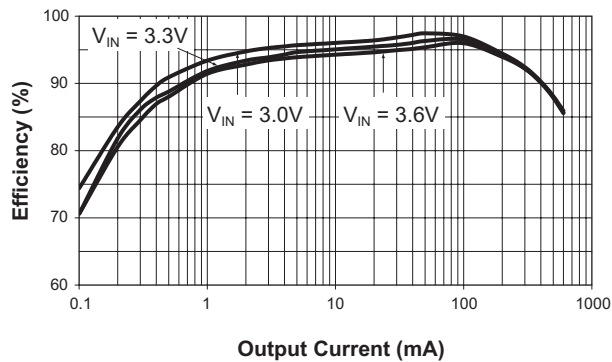
**Efficiency vs. Load**  
( $V_{OUT} = 3.3V$ ;  $L = 10\mu H$ )



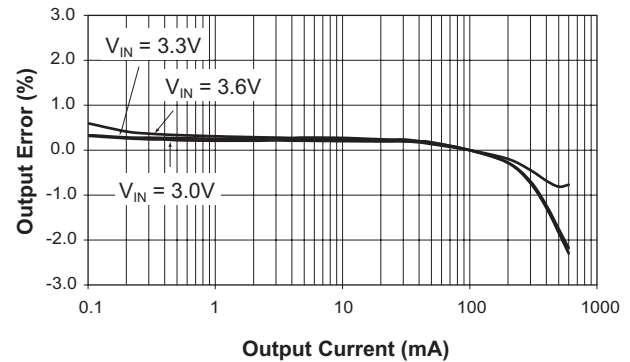
**DC Regulation**  
( $V_{OUT} = 3.3V$ ;  $L = 10\mu H$ )



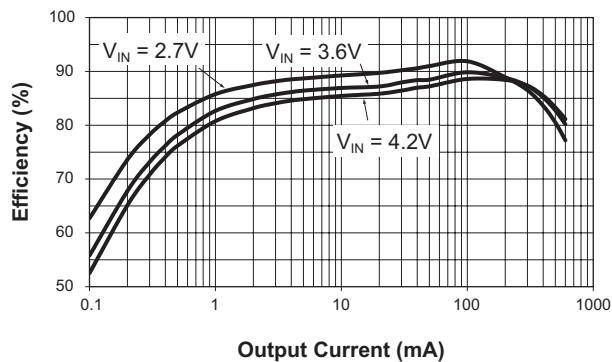
**Efficiency vs. Load**  
( $V_{OUT} = 2.5V$ ;  $L = 10\mu H$ )



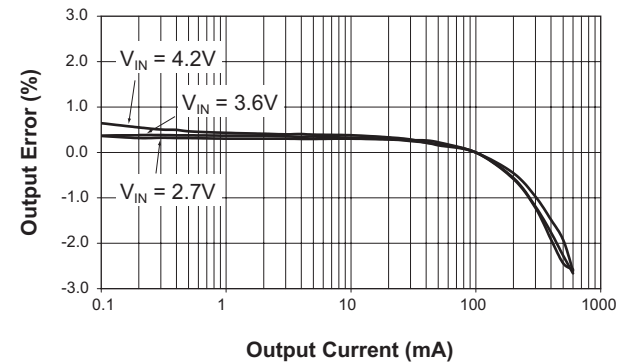
**DC Regulation**  
( $V_{OUT} = 2.5V$ ;  $L = 10\mu H$ )



**Efficiency vs. Load**  
( $V_{OUT} = 1.5V$ ;  $L = 4.7\mu H$ )

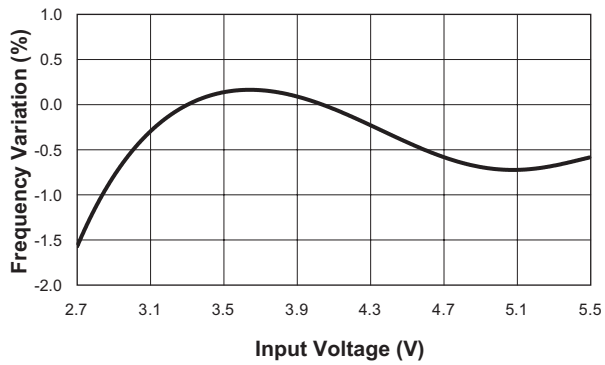


**DC Regulation**  
( $V_{OUT} = 1.5V$ ;  $L = 4.7\mu H$ )

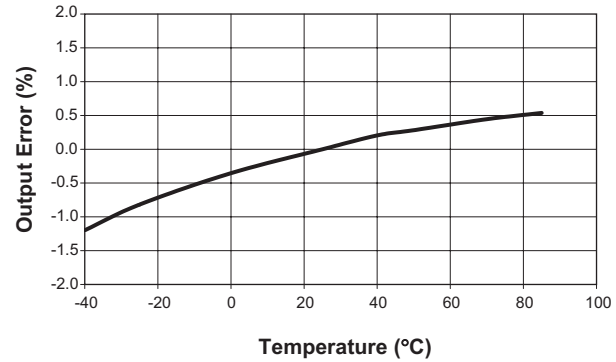


### Typical Characteristics

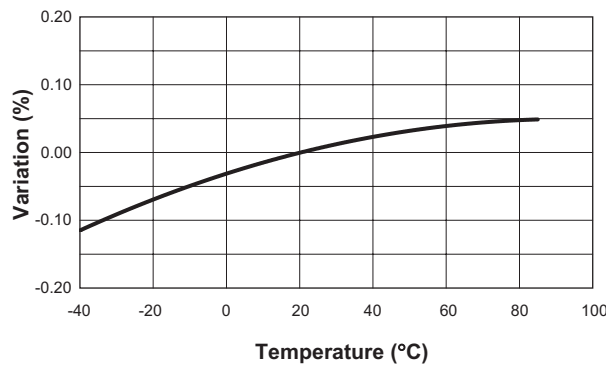
**Frequency vs. Input Voltage**  
( $V_{OUT} = 1.8V$ )



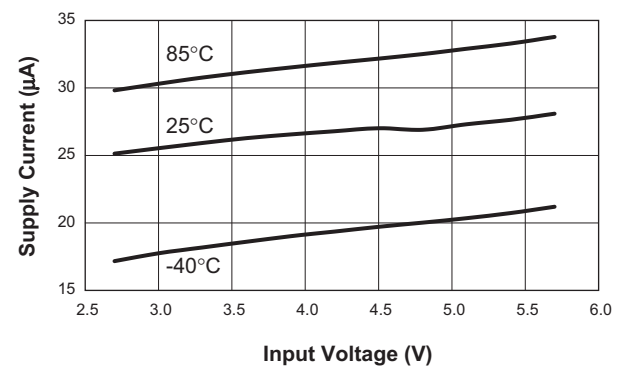
**Output Voltage Error vs. Temperature**  
( $V_{IN} = 3.6V$ ;  $V_O = 2.5V$ )



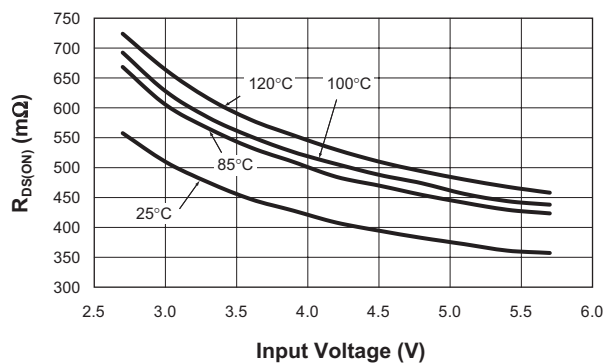
**Switching Frequency vs. Temperature**  
( $V_{IN} = 3.6V$ ;  $V_O = 1.5V$ )



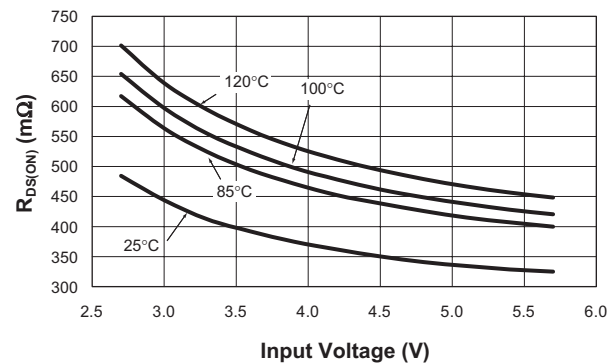
**Quiescent Current vs. Input Voltage**  
( $V_O = 1.8V$ )



**P-Channel  $R_{DS(ON)}$  vs. Input Voltage**

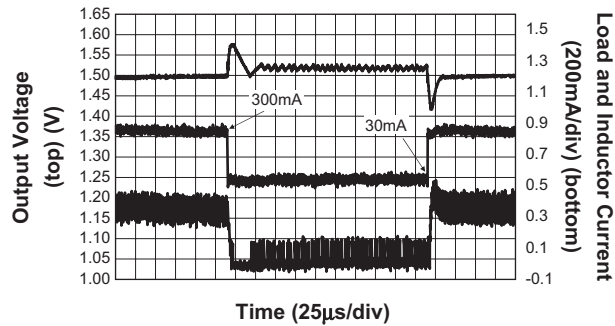


**N-Channel  $R_{DS(ON)}$  vs. Input Voltage**

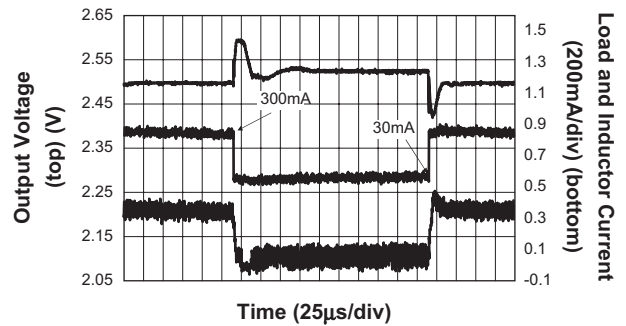


### Typical Characteristics

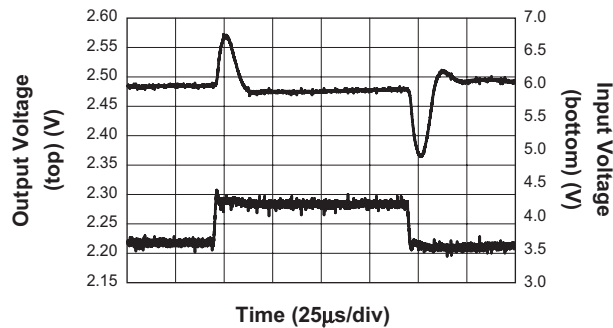
**Load Transient Response**  
(30mA - 300mA;  $V_{IN} = 3.6V$ ;  $V_{OUT} = 1.5V$ ;  $C1 = 22\mu F$ )



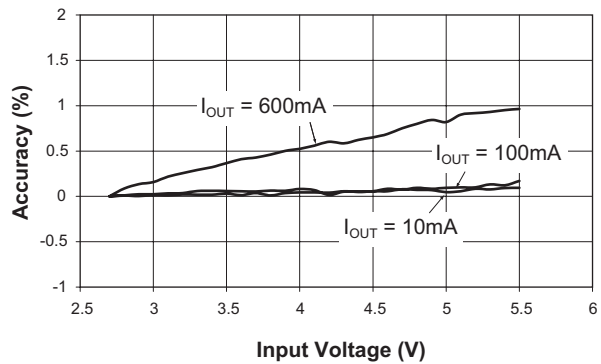
**Load Transient Response**  
(30mA - 300mA;  $V_{IN} = 3.6V$ ;  $V_{OUT} = 2.5V$ ;  $C1 = 22\mu F$ )



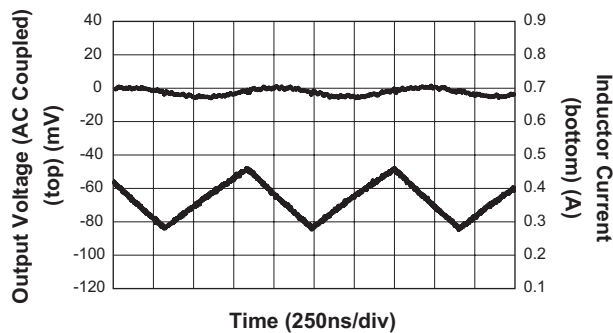
**Line Transient**  
( $V_{OUT} = 2.5V$  @ 500mA)



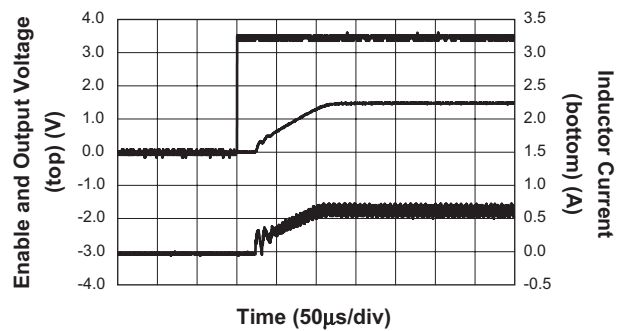
**Line Regulation**  
( $V_{OUT} = 1.5V$ )



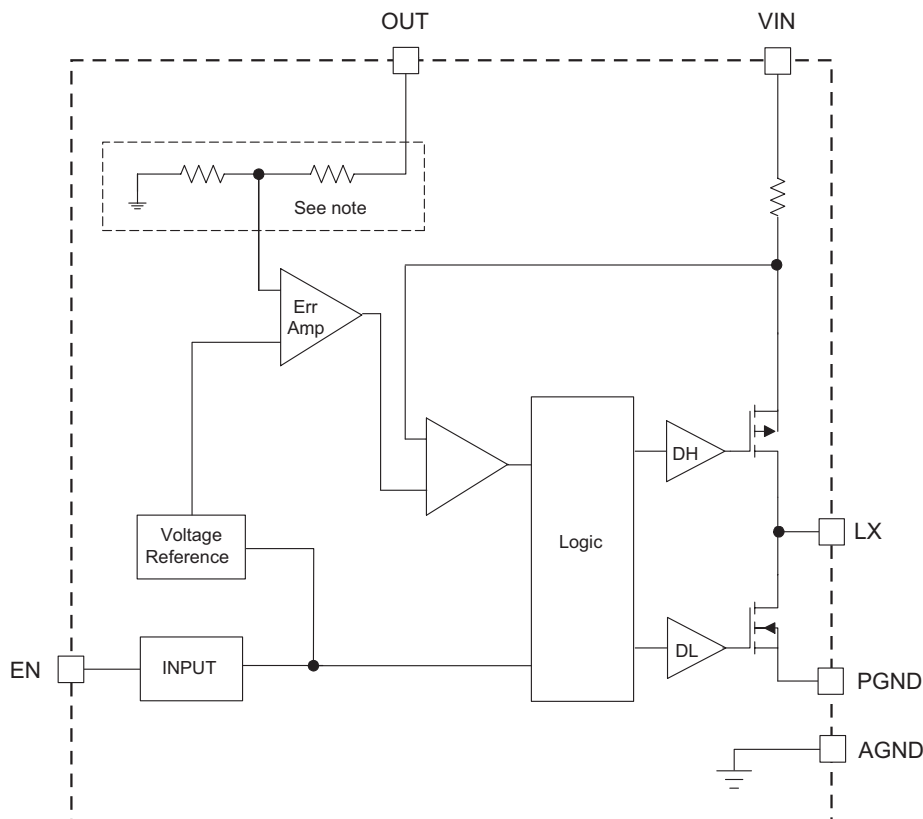
**Output Ripple**  
( $V_{IN} = 3.6V$ ;  $V_{OUT} = 1.8V$ ; 400mA)



**Soft Start**  
( $V_{IN} = 3.6V$ ;  $V_{OUT} = 1.5V$ ;  $L = 4.7\mu H$ )



### Functional Block Diagram



Note: For adjustable version, the internal feedback divider is omitted and the FB pin is tied directly to the internal error amplifier.

### Functional Description

The AAT1123 is a high performance 600mA 1MHz monolithic step-down converter. It has been designed with the goal of minimizing external component size and optimizing efficiency over the complete load range. Apart from the small bypass input capacitor, only a small L-C filter is required at the output. Typically, a 4.7μH inductor and a 22μF ceramic capacitor are recommended (see Table of Values).

The fixed output version requires only three external power components ( $C_{IN}$ ,  $C_{OUT}$ , and L). The adjustable version can be programmed with external feedback to any voltage, ranging from 0.6V to the input voltage. An additional feed-forward capacitor

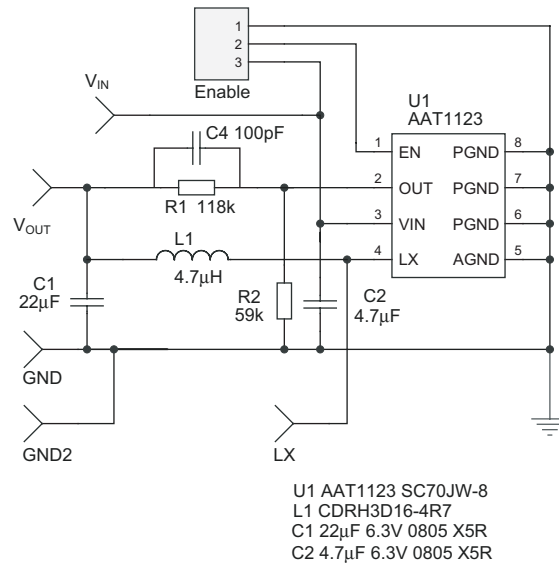
can also be added to the external feedback to provide improved transient response (see Figure 1).

At dropout, the converter duty cycle increases to 100% and the output voltage tracks the input voltage minus the  $R_{DS(ON)}$  drop of the P-channel high-side MOSFET.

The input voltage range is 2.7V to 5.5V. The converter efficiency has been optimized for all load conditions, ranging from no load to heavy load.

The internal error amplifier and compensation provides excellent transient response, load, and line regulation. Soft start eliminates any output voltage overshoot when the enable or the input voltage is applied.





**Figure 1: Enhanced Transient Response Schematic.**

### Control Loop

The AAT1123 is a peak current mode step-down converter. The current through the P-channel MOSFET (high side) is sensed for current loop control, as well as short circuit and overload protection. A fixed slope compensation signal is added to the sensed current to maintain stability for duty cycles greater than 50%. The peak current mode loop appears as a voltage-programmed current source in parallel with the output capacitor.

The output of the voltage error amplifier programs the current mode loop for the necessary peak switch current to force a constant output voltage for all load and line conditions. Internal loop compensation terminates the transconductance voltage error amplifier output. For fixed voltage versions, the error amplifier reference voltage is internally set to program the converter output voltage. For the adjustable output, the error amplifier reference is fixed at 0.6V.

### Soft Start / Enable

Soft start limits the current surge seen at the input and eliminates output voltage overshoot. When pulled low, the enable input forces the AAT1123 into a low-power, non-switching state. The total

input current during shutdown is less than 1µA. The AAT1123 provides turn-on within 100µs (typical) of the enable input transition.

### Current Limit and Over-Temperature Protection

For overload conditions, the peak input current is limited. To minimize power dissipation and stresses under current limit and short-circuit conditions, switching is terminated after entering current limit for a series of pulses. Switching is terminated for seven consecutive clock cycles after a current limit has been sensed for a series of four consecutive clock cycles.

Thermal protection completely disables switching when internal dissipation becomes excessive. The junction over-temperature threshold is 140°C with 15°C of hysteresis. Once an over-temperature or over-current fault conditions is removed, the output voltage automatically recovers.

### Under-Voltage Lockout

Internal bias of all circuits is controlled via the  $V_{IN}$  input. Under-voltage lockout (UVLO) guarantees sufficient  $V_{IN}$  bias and proper operation of all internal circuitry prior to activation.

## Applications Information

### Inductor Selection

The step-down converter uses peak current mode control with slope compensation to maintain stability for duty cycles greater than 50%. The output inductor value must be selected so the inductor current down slope meets the internal slope compensation requirements. The internal slope compensation for the adjustable and low-voltage fixed versions of the AAT1123 is 0.24A/μsec. This equates to a slope compensation that is 75% of the inductor current down slope for a 1.5V output and 4.7μH inductor.

$$m = \frac{0.75 \cdot V_o}{L} = \frac{0.75 \cdot 1.5V}{4.7\mu H} = 0.24 \frac{A}{\mu sec}$$

This is the internal slope compensation for the adjustable (0.6V) version or low-voltage fixed versions. When externally programming the 0.6V version to 2.5V, the calculated inductance is 7.5μH.

$$L = \frac{0.75 \cdot V_o}{m} = \frac{0.75 \cdot V_o}{0.24A/\mu sec} \approx 3 \frac{\mu sec}{A} \cdot V_o$$

$$= 3 \frac{\mu sec}{A} \cdot 2.5V = 7.5\mu H$$

In this case, a standard 10μH value is selected.

For high-voltage fixed versions (2.5V and above),  $m = 0.48A/\mu sec$ . Table 1 displays inductor values for the AAT1123 fixed and adjustable options.

Manufacturer's specifications list both the inductor DC current rating, which is a thermal limitation, and the peak current rating, which is determined by the saturation characteristics. The inductor should not

show any appreciable saturation under normal load conditions. Some inductors may meet the peak and average current ratings yet result in excessive losses due to a high DCR. Always consider the losses associated with the DCR and its effect on the total converter efficiency when selecting an inductor.

The 4.7μH CDRH3D16 series inductor selected from Sumida has a 105mΩ DCR and a 900mA DC current rating. At full load, the inductor DC loss is 17mW which gives a 2.8% loss in efficiency for a 400mA, 1.5V output.

### Input Capacitor

Select a 4.7μF to 10μF X7R or X5R ceramic capacitor for the input. To estimate the required input capacitor size, determine the acceptable input ripple level ( $V_{PP}$ ) and solve for C. The calculated value varies with input voltage and is a maximum when  $V_{IN}$  is double the output voltage.

$$C_{IN} = \frac{\frac{V_o}{V_{IN}} \cdot \left(1 - \frac{V_o}{V_{IN}}\right)}{\left(\frac{V_{PP}}{I_o} - ESR\right) \cdot F_s}$$

$$\frac{V_o}{V_{IN}} \cdot \left(1 - \frac{V_o}{V_{IN}}\right) = \frac{1}{4} \text{ for } V_{IN} = 2 \times V_o$$

$$C_{IN(MIN)} = \frac{1}{\left(\frac{V_{PP}}{I_o} - ESR\right) \cdot 4 \cdot F_s}$$

Always examine the ceramic capacitor DC voltage coefficient characteristics when selecting the proper value. For example, the capacitance of a 10μF, 6.3V, X5R ceramic capacitor with 5.0V DC applied is actually about 6μF.

| Configuration                                   | Output Voltage | Inductor | Slope Compensation |
|---|----------------|----------|--------------------|
| 0.6V Adjustable With External Resistive Divider | 0.6V to 2.0V   | 4.7μH    | 0.24A/μsec         |
|   | 2.5V to 3.3V   | 10μH     | 0.24A/μsec         |
| Fixed Output                                    | 0.6V to 2.0V   | 4.7μH    | 0.24A/μsec         |
|   | 2.5V to 3.3V   | 4.7μH    | 0.48A/μsec         |

**Table 1: Inductor Values.**

The maximum input capacitor RMS current is:

$$I_{RMS} = I_O \cdot \sqrt{\frac{V_O}{V_{IN}} \cdot \left(1 - \frac{V_O}{V_{IN}}\right)}$$

The input capacitor RMS ripple current varies with the input and output voltage and will always be less than or equal to half of the total DC load current.

$$\sqrt{\frac{V_O}{V_{IN}} \cdot \left(1 - \frac{V_O}{V_{IN}}\right)} = \sqrt{D \cdot (1 - D)} = \sqrt{0.5^2} = \frac{1}{2}$$

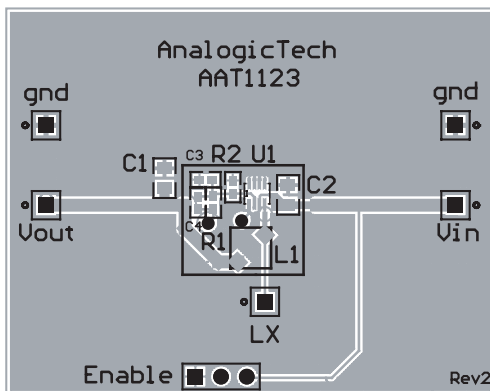
for  $V_{IN} = 2 \times V_O$

$$I_{RMS(MAX)} = \frac{I_O}{2}$$

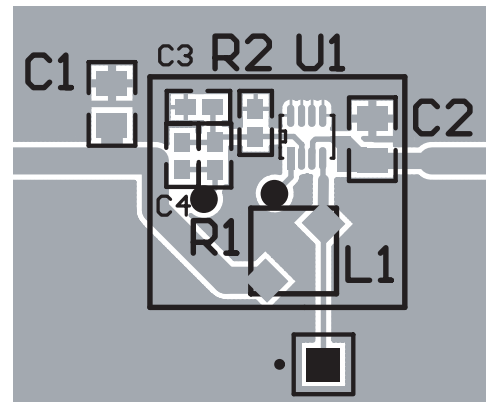
The term  $\frac{V_O}{V_{IN}} \cdot \left(1 - \frac{V_O}{V_{IN}}\right)$  appears in both the input voltage ripple and input capacitor RMS current equations and is a maximum when  $V_O$  is twice  $V_{IN}$ . This is why the input voltage ripple and the input capacitor RMS current ripple are a maximum at 50% duty cycle.

The input capacitor provides a low impedance loop for the edges of pulsed current drawn by the AAT1123. Low ESR/ESL X7R and X5R ceramic capacitors are ideal for this function. To minimize stray inductance, the capacitor should be placed as closely as possible to the IC. This keeps the high frequency content of the input current localized, minimizing EMI and input voltage ripple.

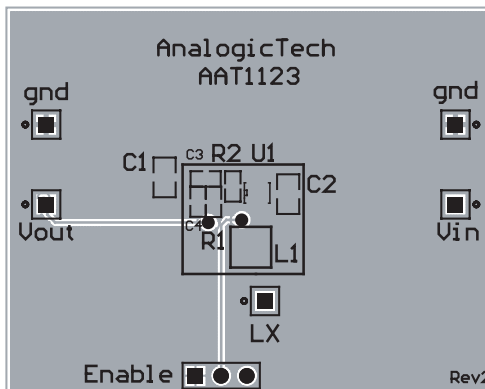
The proper placement of the input capacitor (C2) can be seen in the evaluation board layout in Figure 2.



**Figure 2: AAT1123 Evaluation Board Top Side.**



**Figure 3: Exploded View of Evaluation Board Top Side Layout.**



**Figure 4: AAT1123 Evaluation Board Bottom Side.**

A laboratory test set-up typically consists of two long wires running from the bench power supply to the evaluation board input voltage pins. The inductance of these wires, along with the low-ESR ceramic input capacitor, can create a high Q network that may affect converter performance. This problem often becomes apparent in the form of excessive ringing in the output voltage during load transients. Errors in the loop phase and gain measurements can also result.

Since the inductance of a short PCB trace feeding the input voltage is significantly lower than the power leads from the bench power supply, most applications do not exhibit this problem.

In applications where the input power source lead inductance cannot be reduced to a level that does not affect the converter performance, a high ESR tantalum or aluminum electrolytic should be placed in parallel with the low ESR, ESL bypass ceramic. This dampens the high Q network and stabilizes the system.

### Output Capacitor

The output capacitor limits the output ripple and provides holdup during large load transitions. A 22μF X5R or X7R ceramic capacitor provides sufficient bulk capacitance to stabilize the output during large load transitions and has the ESR and ESL characteristics necessary for low output ripple.

The output voltage droop due to a load transient is dominated by the capacitance of the ceramic output capacitor. During a step increase in load current, the ceramic output capacitor alone supplies the load current until the loop responds. Within two or three switching cycles, the loop responds and the inductor current increases to match the load current demand. The relationship of the output voltage droop during the three switching cycles to the output capacitance can be estimated by:

$$C_{OUT} = \frac{3 \cdot \Delta I_{LOAD}}{V_{DROOP} \cdot F_S}$$

Once the average inductor current increases to the DC load level, the output voltage recovers. The

above equation establishes a limit on the minimum value for the output capacitor with respect to load transients.

The internal voltage loop compensation limits the minimum output capacitor value to 22μF. This is due to its effect on the loop crossover frequency (bandwidth), phase margin, and gain margin. Increased output capacitance will reduce the crossover frequency with greater phase margin.

The maximum output capacitor RMS ripple current is given by:

$$I_{RMS(MAX)} = \frac{1}{2 \cdot \sqrt{3}} \cdot \frac{V_{OUT} \cdot (V_{IN(MAX)} - V_{OUT})}{L \cdot F \cdot V_{IN(MAX)}}$$

Dissipation due to the RMS current in the ceramic output capacitor ESR is typically minimal, resulting in less than a few degrees rise in hot-spot temperature.

### Adjustable Output Resistor Selection

For applications requiring an adjustable output voltage, the 0.6V version can be externally programmed. Resistors R1 and R2 of Figure 5 program the output to regulate at a voltage higher than 0.6V. To limit the bias current required for the external feedback resistor string while maintaining good noise immunity, the minimum suggested value for R2 is 59kΩ. Although a larger value will further reduce quiescent current, it will also increase the impedance of the feedback node, making it more sensitive to external noise and interference. Table 2 summarizes the resistor values for various output voltages with R2 set to either 59kΩ for good noise immunity or 221kΩ for reduced no load input current.

$$R1 = \left( \frac{V_{OUT}}{V_{REF}} - 1 \right) \cdot R2 = \left( \frac{1.5V}{0.6V} - 1 \right) \cdot 59k\Omega = 88.5k\Omega$$

The adjustable version of the AAT1123, combined with an external feedforward capacitor (C4 in Figure 1), delivers enhanced transient response for extreme pulsed load applications. The addition of the feedforward capacitor typically requires a large output capacitor C1 for stability.

| V <sub>OUT</sub> (V) | R2 = 59kΩ | R2 = 221kΩ |
|----------------------|-----------|------------|
|                      | R1 (kΩ)   | R1 (kΩ)    |
| 0.8                  | 19.6      | 75         |
| 0.9                  | 29.4      | 113        |
| 1.0                  | 39.2      | 150        |
| 1.1                  | 49.9      | 187        |
| 1.2                  | 59.0      | 221        |
| 1.3                  | 68.1      | 261        |
| 1.4                  | 78.7      | 301        |
| 1.5                  | 88.7      | 332        |
| 1.8                  | 118       | 442        |
| 1.85                 | 124       | 464        |
| 2.0                  | 137       | 523        |
| 2.5                  | 187       | 715        |
| 3.3                  | 267       | 1000       |

**Table 2: Adjustable Resistor Values For Use With 0.6V Step-Down Converter.**

### Thermal Calculations

There are three types of losses associated with the AAT1123 step-down converter: switching losses, conduction losses, and quiescent current losses.

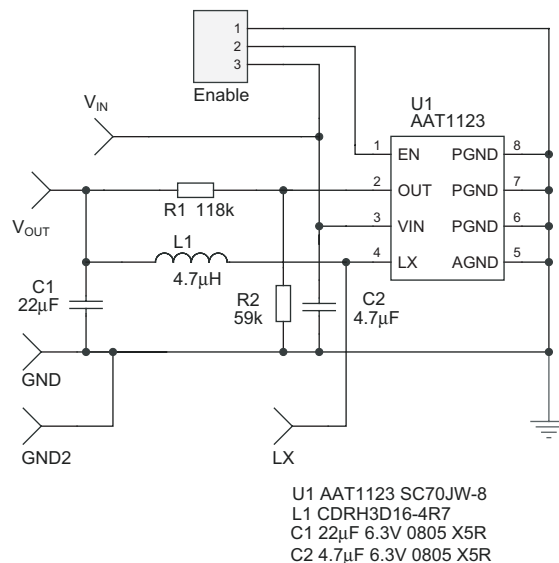
Conduction losses are associated with the  $R_{DS(ON)}$  characteristics of the power output switching devices. Switching losses are dominated by the gate charge of the power output switching devices. At full load, assuming continuous conduction mode (CCM), a simplified form of the losses is given by:

$$P_{TOTAL} = \frac{I_O^2 \cdot (R_{DS(ON)(HS)} \cdot V_O + R_{DS(ON)(LS)} \cdot [V_{IN} - V_O])}{V_{IN}} + (t_{sw} \cdot F \cdot I_O + I_Q) \cdot V_{IN}$$

$I_Q$  is the step-down converter quiescent current. The term  $t_{sw}$  is used to estimate the full load step-down converter switching losses.

For the condition where the step-down converter is in dropout at 100% duty cycle, the total device dissipation reduces to:

$$P_{TOTAL} = I_O^2 \cdot R_{DS(ON)(HS)} + I_Q \cdot V_{IN}$$



**Figure 5: AAT1123 Adjustable Evaluation Board Schematic.**

Since  $R_{DS(ON)}$ , quiescent current, and switching losses all vary with input voltage, the total losses should be investigated over the complete input voltage range.

Given the total losses, the maximum junction temperature can be derived from the  $\theta_{JA}$  for the SC70JW-8 package which is 160°C/W.

$$T_{J(MAX)} = P_{TOTAL} \cdot \theta_{JA} + T_{AMB}$$

## Layout

The suggested PCB layout for the AAT1123 is shown in Figures 2, 3, and 4. The following guidelines should be used to help ensure a proper layout.

1. The input capacitor (C2) should connect as closely as possible to  $V_{IN}$  (Pin 3) and PGND (Pins 6-8).
2. C1 and L1 should be connected as closely as possible. The connection of L1 to the LX pin should be as short as possible.
3. The feedback trace or OUT pin (Pin 2) should be separate from any power trace and connect as closely as possible to the load point. Sensing along a high-current load trace will degrade DC load regulation. If external feedback resistors are used, they should be placed as closely as possible to the OUT pin (Pin 2) to minimize the length of the high impedance feedback trace.
4. The resistance of the trace from the load return to PGND (Pins 6-8) should be kept to a minimum. This will help to minimize any error in DC regulation due to differences in the potential of the internal signal ground and the power ground.

## **Step-Down Converter Design Example**

### **Specifications**

$V_O = 1.8V @ 400mA$  (adjustable using 0.6V version), Pulsed Load  $\Delta I_{LOAD} = 300mA$

$V_{IN} = 2.7V$  to  $4.2V$  (3.6V nominal)

$F_S = 1.0MHz$

$T_{AMB} = 85^\circ C$

### **1.8V Output Inductor**

$$L_1 = 3 \frac{\mu sec}{A} \cdot V_{O2} = 3 \frac{\mu sec}{A} \cdot 1.8V = 5.4\mu H \quad (\text{see Table 1})$$

For Sumida inductor CDRH3D16,  $4.7\mu H$ ,  $DCR = 105m\Omega$ .

$$\Delta I_{L1} = \frac{V_O}{L_1 \cdot F} \cdot \left(1 - \frac{V_O}{V_{IN}}\right) = \frac{1.8V}{4.7\mu H \cdot 1.0MHz} \cdot 1 - \left(\frac{1.8V}{4.2V}\right) = 218mA$$

$$I_{PKL1} = I_O + \frac{\Delta I_{L1}}{2} = 0.4A + 0.11A = 0.51A$$

$$P_{L1} = I_O^2 \cdot DCR = 0.4A^2 \cdot 105m\Omega = 17mW$$

### **1.8V Output Capacitor**

$$V_{DROOP} = 0.05V$$

$$C_{OUT} = \frac{3 \cdot \Delta I_{LOAD}}{V_{DROOP} \cdot F_S} = \frac{3 \cdot 0.3A}{0.05V \cdot 1MHz} = 18.0\mu F$$

$$I_{RMS} = \frac{1}{2 \cdot \sqrt{3}} \cdot \frac{(V_O) \cdot (V_{IN(MAX)} - V_O)}{L_1 \cdot F \cdot V_{IN(MAX)}} = \frac{1}{2 \cdot \sqrt{3}} \cdot \frac{1.8V \cdot (4.2V - 1.8V)}{4.7\mu H \cdot 1.0MHz \cdot 4.2V} = 63mA_{rms}$$

$$P_{esr} = esr \cdot I_{RMS}^2 = 5m\Omega \cdot (63mA)^2 = 20\mu W$$

### Input Capacitor

Input Ripple  $V_{PP} = 25\text{mV}$

$$C_{IN} = \frac{1}{\left(\frac{V_{PP}}{I_O} - \text{ESR}\right) \cdot 4 \cdot F_S} = \frac{1}{\left(\frac{25\text{mV}}{0.4\text{A}} - 5\text{m}\Omega\right) \cdot 4 \cdot 1\text{MHz}} = 4.75\mu\text{F}$$

$$I_{\text{RMS}} = \frac{I_O}{2} = 0.2\text{Arms}$$

$$P = \text{esr} \cdot I_{\text{RMS}}^2 = 5\text{m}\Omega \cdot (0.2\text{A})^2 = 0.2\text{mW}$$

### AAT1123 Losses

$$\begin{aligned} P_{\text{TOTAL}} &= \frac{I_O^2 \cdot (R_{\text{DS(on)(HS)}} \cdot V_O + R_{\text{DS(on)(LS)}} \cdot [V_{\text{IN}} - V_O])}{V_{\text{IN}}} \\ &\quad + (t_{\text{sw}} \cdot F \cdot I_O + I_Q) \cdot V_{\text{IN}} \\ &= \frac{0.4^2 \cdot (0.725\Omega \cdot 1.8\text{V} + 0.7\Omega \cdot [4.2\text{V} - 1.8\text{V}])}{4.2\text{V}} \\ &\quad + (5\text{ns} \cdot 1.0\text{MHz} \cdot 0.4\text{A} + 50\mu\text{A}) \cdot 4.2\text{V} = 122\text{mW} \end{aligned}$$

$$T_{\text{J(MAX)}} = T_{\text{AMB}} + \Theta_{\text{JA}} \cdot P_{\text{LOSS}} = 85^\circ\text{C} + (160^\circ\text{C/W}) \cdot 122\text{mW} = 104.5^\circ\text{C}$$



| $V_{OUT}$ (V)                       | R1 (k $\Omega$ )  | R1 (k $\Omega$ )                | L1 ( $\mu$ H) |
|-------------------------------------|-------------------|---------------------------------|---------------|
| Adjustable Version<br>(0.6V device) | R2 = 59k $\Omega$ | R2 = 221k $\Omega$ <sup>1</sup> |               |
| 0.8                                 | 19.6              | 75.0                            | 4.7           |
| 0.9                                 | 29.4              | 113                             | 4.7           |
| 1.0                                 | 39.2              | 150                             | 4.7           |
| 1.1                                 | 49.9              | 187                             | 4.7           |
| 1.2                                 | 59.0              | 221                             | 4.7           |
| 1.3                                 | 68.1              | 261                             | 4.7           |
| 1.4                                 | 78.7              | 301                             | 4.7           |
| 1.5                                 | 88.7              | 332                             | 4.7           |
| 1.8                                 | 118               | 442                             | 4.7           |
| 1.85                                | 124               | 464                             | 4.7           |
| 2.0                                 | 137               | 523                             | 4.7 or 6.8    |
| 2.5                                 | 187               | 715                             | 10            |
| 3.3                                 | 267               | 1000                            | 10            |
| $V_{OUT}$ (V)                       | R1 (k $\Omega$ )  |                                 | L1 ( $\mu$ H) |
| Fixed Version                       | R2 Not Used       |                                 |               |
| 0.6-3.3V                            | 0                 |                                 | 4.7           |

**Table 3: Evaluation Board Component Values.**

| Manufacturer | Part Number     | Inductance ( $\mu$ H) | Max DC Current (A) | DCR ( $\Omega$ ) | Size (mm) LxWxH | Type         |
|--------------|-----------------|-----------------------|--------------------|------------------|-----------------|--------------|
| Sumida       | CDRH3D16-4R7    | 4.7                   | 0.90               | 0.11             | 4.0x4.0x1.8     | Shielded     |
| Sumida       | CDRH3D16/HP-100 | 10                    | 0.84               | 0.23             | 4.0x4.0x1.8     | Shielded     |
| MuRata       | LQH32CN4R7M33   | 4.7                   | 0.65               | 0.15             | 2.5x3.2x2.0     | Non-Shielded |
| MuRata       | LQH32CN4R7M53   | 4.7                   | 0.65               | 0.15             | 2.5x3.2x1.55    | Non-Shielded |
| Coilcraft    | LPO6610-472     | 4.7                   | 1.10               | 0.20             | 5.5x6.6x1.0     | 1mm          |
| Coilcraft    | LPO3310-472     | 4.7                   | 0.80               | 0.27             | 3.3x3.3x1.0     | 1mm          |
| Coiltronics  | SDRC10-4R7      | 4.7                   | 1.53               | 0.117            | 4.5x3.6x1.0     | 1mm Shielded |
| Coiltronics  | SDR10-4R7       | 4.7                   | 1.30               | 0.122            | 5.7x4.4x1.0     | 1mm Shielded |
| Coiltronics  | SD3118-4R7      | 4.7                   | 0.98               | 0.122            | 3.1x3.1x1.85    | Shielded     |
| Coiltronics  | SD18-4R7        | 4.7                   | 1.77               | 0.082            | 5.2x5.2x1.8     | Shielded     |

**Table 4: Typical Surface Mount Inductors.**

1. For reduced quiescent current R2 = 221k $\Omega$ .

| Manufacturer | Part Number       | Value      | Voltage | Temp. Co. | Case |
|--------------|-------------------|------------|---------|-----------|------|
| MuRata       | GRM21BR60J226ME39 | 22 $\mu$ F | 6.3V    | X5R       | 0805 |
| TDK          | C2012X5R0J226K    | 22 $\mu$ F | 6.3V    | X5R       | 0805 |
| Taiyo-Yuden  | JMK212BJ226KL     | 22 $\mu$ F | 6.3V    | X5R       | 0805 |

**Table 5: Surface Mount Capacitors.**

## Ordering Information

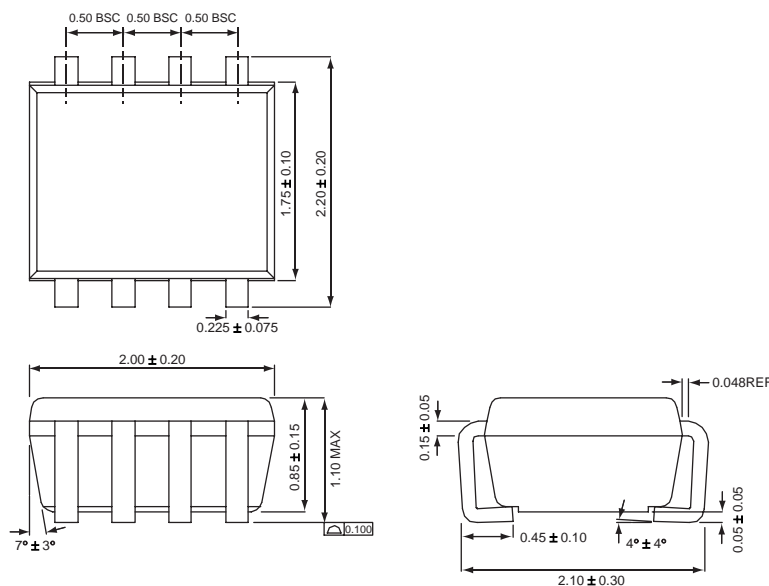
| Output Voltage <sup>1</sup> | Package  | Marking <sup>2</sup> | Part Number (Tape and Reel) <sup>3</sup> |
|-----------------------------|----------|----------------------|--|
| 0.6                         | SC70JW-8 | PMXYY                | <b>AAT1123IJS-0.6-T1</b>                 |
| 1.2                         | SC70JW-8 |                      |  |
| 1.5                         | SC70JW-8 |                      |  |
| 1.8                         | SC70JW-8 |                      |  |
| 2.5                         | SC70JW-8 |                      |  |



All AnalogicTech products are offered in Pb-free packaging. The term “Pb-free” means semiconductor products that are in compliance with current RoHS standards, including the requirement that lead not exceed 0.1% by weight in homogeneous materials. For more information, please visit our website at <http://www.analogictech.com/pbfree>.

## Package Information

### SC70JW-8



All dimensions in millimeters.

1. Contact Sales for other voltage options.
2. XYY = assembly and date code.
3. Sample stock is generally held on part numbers listed in **BOLD**.

AnalogicTech cannot assume responsibility for use of any circuitry other than circuitry entirely embodied in an AnalogicTech product. No circuit patent licenses, copyrights, mask work rights, or other intellectual property rights are implied.

AnalogicTech reserves the right to make changes to their products or specifications or to discontinue any product or service without notice, and advise customers to obtain the latest version of relevant information to verify, before placing orders, that information being relied on is current and complete. All products are sold subject to the terms and conditions of sale supplied at the time of order acknowledgement, including those pertaining to warranty, patent infringement, and limitation of liability.

AnalogicTech warrants performance of its semiconductor products to the specifications applicable at the time of sale in accordance with AnalogicTech's standard warranty. Testing and other quality control techniques are utilized to the extent AnalogicTech deems necessary to support this warranty. Specific testing of all parameters of each device is not necessarily performed.

**Advanced Analogic Technologies, Inc.**  
**830 E. Arques Avenue, Sunnyvale, CA 94085**  
**Phone (408) 737-4600**  
**Fax (408) 737-4611**