

Monochrome image sensor head (8 pixel / mm)

IA2010-MB10A

The IA2010-MB10A is a state-of-the-art compact, lightweight image sensor head that resulted from the combination of ROHM's LSI circuit technology and thermal printhead mounting technology. The IA3008-MB10A is perfect for multi-function printers (MFP) or facsimiles that print on normal paper using laser units.

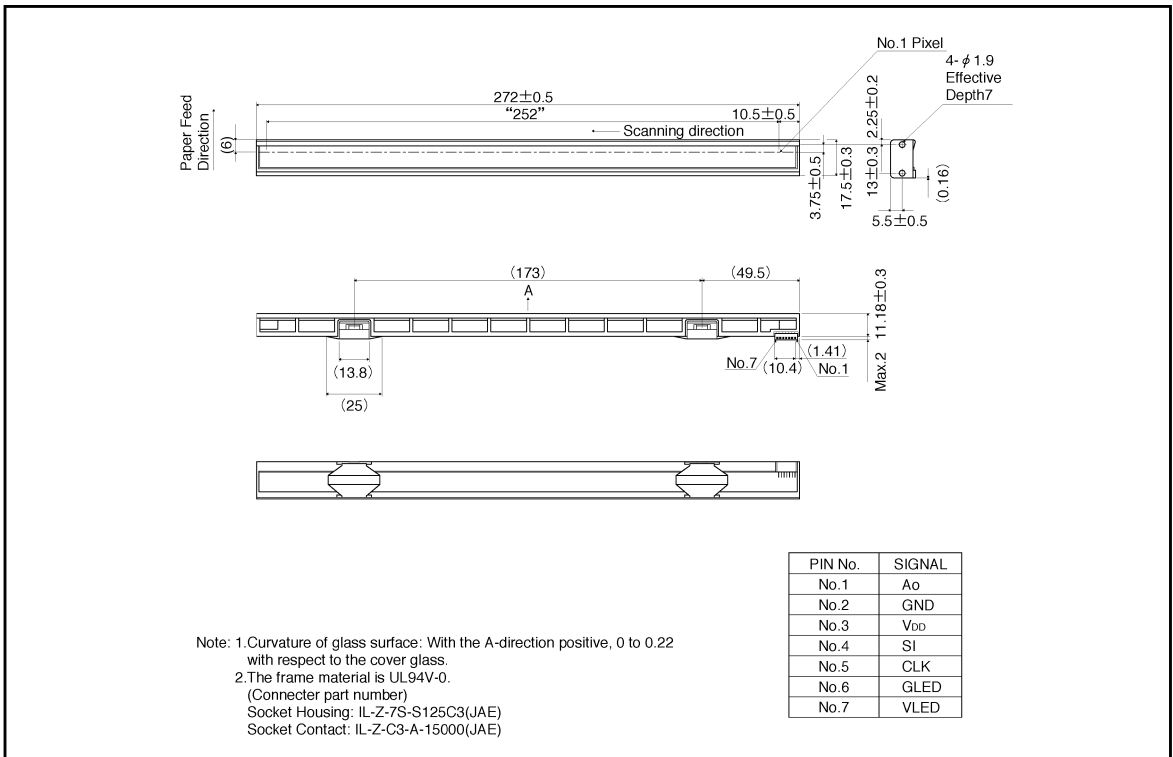
●Applications

Facsimiles
Image scanning devices

●Features

- 1) The amplifiers, resistors, capacitors, and other discrete components that were normally externally attached, are built into the sensor IC.
- 2) Compact body and lightweight achieved by the placement of the LED light source and sensor IC on the same board.
- 3) Uses a special ROHM developed prism that provides superior light gathering characteristics and uniform light dispersion.
- 4) Uses a ceramic board as the base board for minimal temperature fluctuations and uniform thermal dispersion.

●External dimensions (Units: mm)



● Characteristics

| Parameter | Symbol | Typ. | Unit |
|--------------------------|--------------------|-------|------------|
| Effective scanning width | — | 252 | mm |
| Primary scan dot density | — | 8 | pixel / mm |
| Total dot number | — | 2016 | dots |
| Power supply voltage | V _{DD} | 5 | V |
| Scanning speed | SLT | 5 | ms / line |
| Clock frequency | CLK | 500 | kHz |
| Maximum dynamic range | VR _{Max.} | 1.6 | V |
| Minimum dynamic range | VR _{Min.} | 0.84 | V |
| Dark output | V _{od} | 0~300 | mV |
| Operating temperature | — | 5~45 | °C |

● Pin assignments

| No. | Circuit | I / O | Functions |
|-----|-----------------|-------|------------------|
| 1 | Ao | O | Analog output |
| 2 | GND | I | Ground |
| 3 | V _{DD} | I | Power supply |
| 4 | SI | I | Serial-in |
| 5 | CLK | I | Clock |
| 6 | GLED | I | LED ground |
| 7 | VLED | I | LED power supply |

●Timing chart

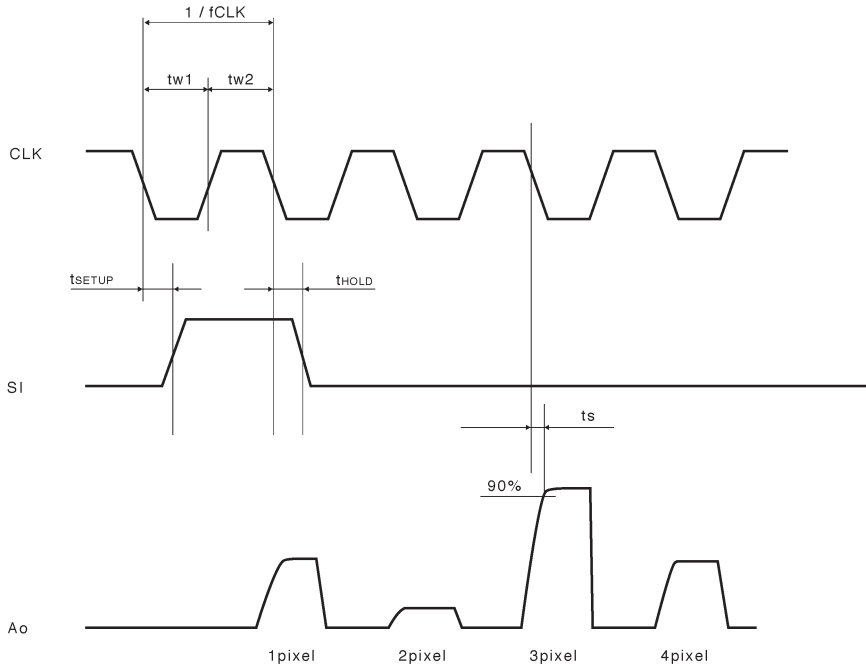


Fig.1

●Equivalent circuit

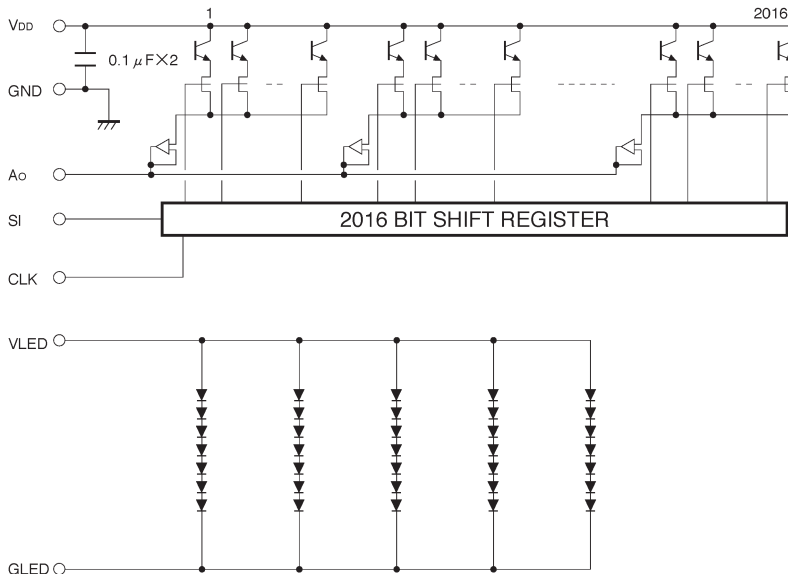


Fig.2