

T-41-11

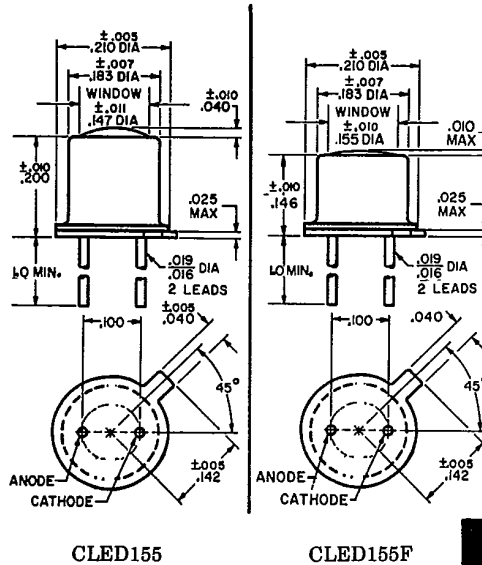
**CLED155  
CLED155F**

**Gallium  
Aluminum Arsenide  
Infrared Emitting  
Diode**

**GENERAL DESCRIPTION** — The Clairex CLED155 series Gallium Aluminum Arsenide diodes are in hermetically sealed TO46 packages. The lensed CLED155 emits a controlled pattern of infrared radiation whereas the flat window CLED155F radiates a wide angle pattern. The peak spectral point is 880nm, thereby greatly matching Clairex's silicon photosensors.

**ABSOLUTE MAXIMUM RATINGS**

- Continuous Current: 100ma (with heat sink)
- Reverse Voltage: 3V
- Peak Pulsed Current (P.W. = 1μs, DF = .01): 3Amp
- Power Dissipation: 165mw
- Derate: 1.65mw/°C
- Operating Junction Temp. 125°C



**ELECTRICAL CHARACTERISTICS (25°C Free Air unless otherwise designated.)**

Symbol	Characteristics	Test Conditions	Min.	Typ.	Max.	Unit
P <sub>o</sub>	Output Power CLED155, 155F 155A, 155FA 155B, 155FB 155C, 155FC 155D, 155FD	I <sub>F</sub> = 50 ma	3.0 3.5 4.5 5.25 6.00			milliwatts milliwatts milliwatts milliwatts milliwatts
λ <sub>PEAK</sub>	Wave Length			.88		microns
V <sub>F</sub>	Forward Voltage	I <sub>F</sub> = 50 ma			1.8	volts
BV <sub>R</sub>	Reverse Breakdown Voltage	I <sub>R</sub> = 10μa	3.0			volts
θ	½ Power Angle CLED 155 155F			20 60		degrees degrees

T-41-11

