



SAW Components

Data Sheet K 9352 M

Data Sheet

An abstract, grayscale graphic featuring a large, stylized, and slightly blurred "EPCOS" logo. The logo is tilted and appears to be part of a larger, layered design with curved, metallic-looking surfaces, creating a sense of depth and motion. The background is dark and textured.



SAW Components

K 9352 M

IF Filter for Audio Applications

38,00 MHz

Data Sheet

Standard

- B/G
- D/K
- I
- M/N

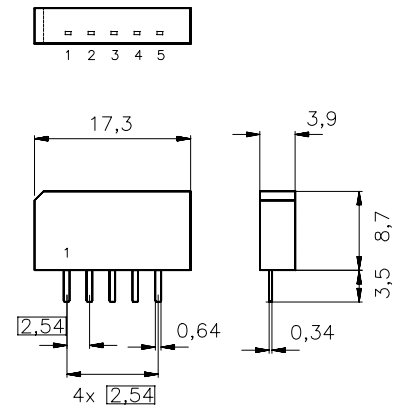
Features

- TV IF audio filter with pass band for sound carriers between 31,50 MHz and 33,50 MHz

Terminals

- Tinned CuFe alloy

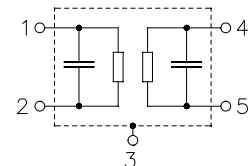
Plastic package **SIP5K**



Dimensions in mm, approx. weight 1,0 g

Pin configuration

- 1 Input
- 2 Input - ground
- 3 Chip carrier - ground
- 4 Output
- 5 Output



Type	Ordering code	Marking and package according to	Packing according to
K 9352 M	B39380-K9352-M100	C61157-A1-A15	F61074-V8067-Z000

Maximum ratings

Operable temperature range	T_A	-25/+65	°C	
Storage temperature range	T_{stg}	-40/+85	°C	
DC voltage	V_{DC}	12	V	between any terminals
AC voltage	V_{pp}	10	V	between any terminals



SAW Components

K 9352 M

IF Filter for Audio Applications

38,00 MHz

Data Sheet

Characteristics

Reference temperature:

$$T_A = 25\text{ °C}$$

Terminating source impedance:

$$Z_S = 50\ \Omega$$

Terminating load impedance:

$$Z_L = 2\text{ k}\Omega \parallel 3\text{ pF}$$

		min.	typ.	max.	
Insertion attenuation					
	α				
Reference level for the following data	31,50 MHz	11,8	13,3	14,8	dB
Relative attenuation					
	α_{rel}				
Sound carrier	32,50 MHz	-1,1	-0,1	0,9	dB
	33,50 MHz	-0,8	0,2	1,2	dB
Picture carrier	38,00 MHz	44,0	52,0	—	dB
Adjacent picture carrier	30,00 MHz	42,0	54,0	—	dB
Adjacent sound carrier	39,50 MHz	42,0	52,0	—	dB
	40,00 MHz	40,0	47,0	—	dB
	40,50 MHz	44,0	56,0	—	dB
Lower sidelobe	25,00 ... 30,00 MHz	37,0	43,0	—	dB
Upper sidelobe	38,00 ... 45,00 MHz	39,0	46,0	—	dB
Impedance at 31,50 MHz					
Input:	$Z_{\text{IN}} = R_{\text{IN}} \parallel C_{\text{IN}}$	—	1,7 \parallel 11,0	—	k Ω \parallel pF
Output:	$Z_{\text{OUT}} = R_{\text{OUT}} \parallel C_{\text{OUT}}$	—	2,1 \parallel 5,3	—	k Ω \parallel pF
Temperature coefficient of frequency					
	TC_f	—	-72	—	ppm/K



SAW Components

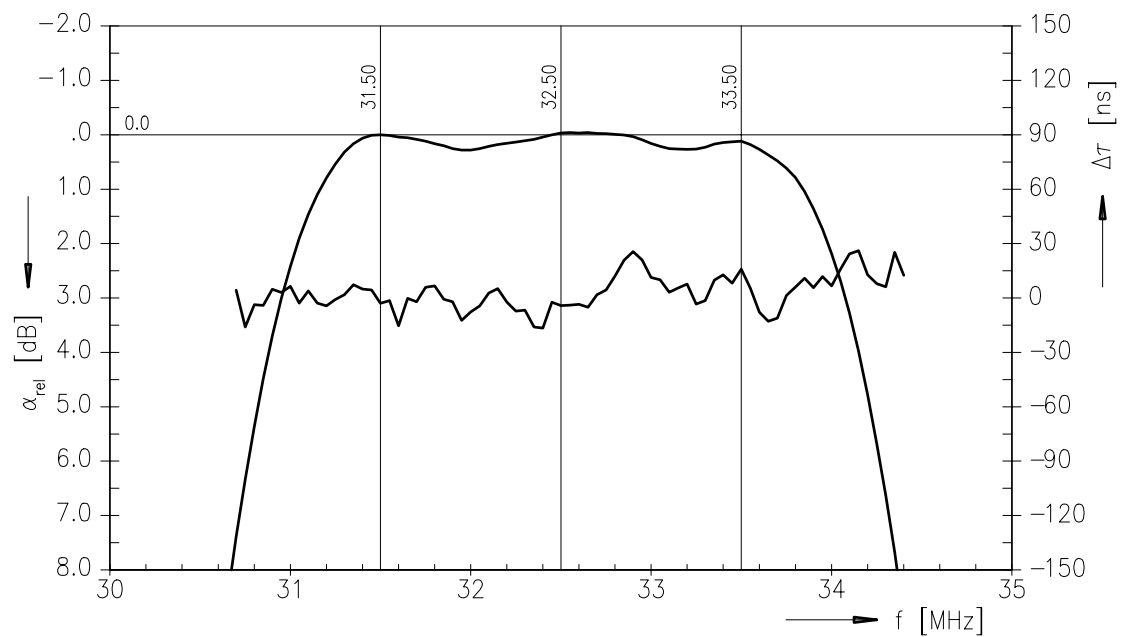
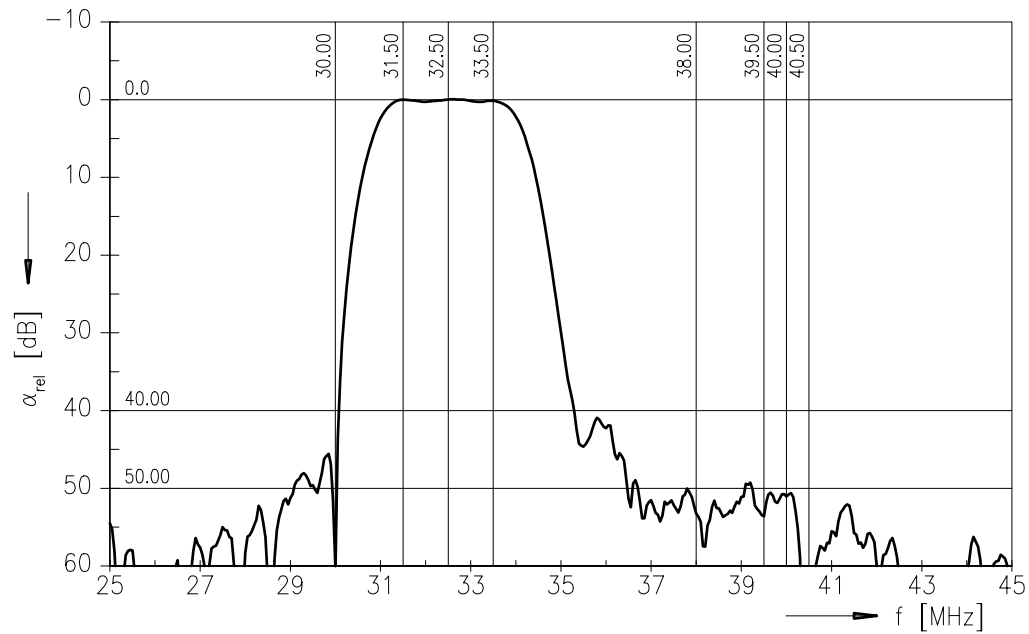
K 9352 M

IF Filter for Audio Applications

38,00 MHz

Data Sheet

Frequency response





SAW Components	K 9352 M
IF Filter for Audio Applications	38,00 MHz

Data Sheet

Published by EPCOS AG

Surface Acoustic Wave Components Division, SAW CE MM PD

P.O. Box 80 17 09, D-81617 München

© EPCOS AG 2001. All Rights Reserved.

As far as patents or other rights of third parties are concerned, liability is only assumed for components per se, not for applications, processes and circuits implemented within components or assemblies.

The information describes the type of component and shall not be considered as assured characteristics.

Terms of delivery and rights to change design reserved.

For questions on technology, prices and delivery please contact the sales offices of EPCOS AG or the international representatives.

Due to technical requirements components may contain dangerous substances. For information on the type in question please also contact one of our sales offices.