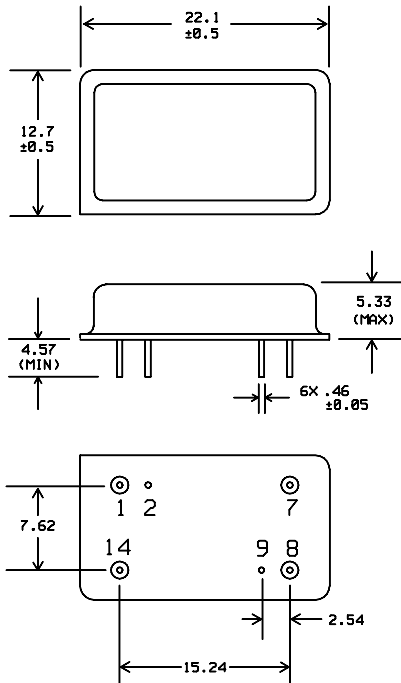






**PACKAGE OUTLINE**

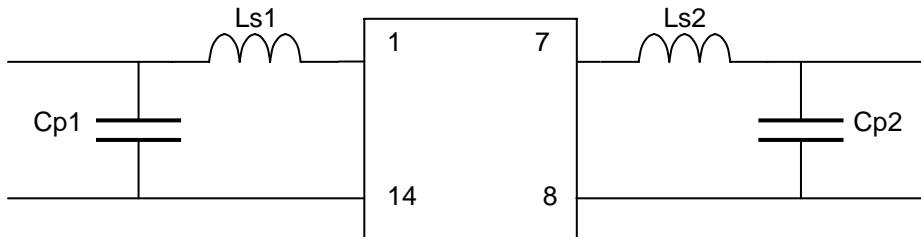


**Units:** mm

**Pin Configuration:**

- Input: 1
- Input Return: 14
- Output: 7
- Output Return: 8
- Ground: 2, 9

**MATCHING CIRCUIT**



Typical component values:      Ls1 = 100 nH                      Ls2 = 100 nH  
   Cp1 = 33 pF                              Cp2 = 24 pF

(Minimum inductor Q = 40)

**Notes**

- Maximum 2% tolerance matching components shall be used.
- Tuning values shown are for reference only. Optimum values may change depending upon board layout.

