

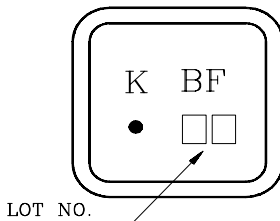
Band pass filters for the receiving RF circuits of pager

- High stability and reliability with good performance and no adjustment.
- Wide and sharp pass band characteristics.
- Low insertion loss and deep stop band attenuation for interference.
- Terminating Impedance : 50Ω.
- KF930AS : SC-45 Package, KF930AV : SC-44 Package.
- F-11 Package Type : KF930A.

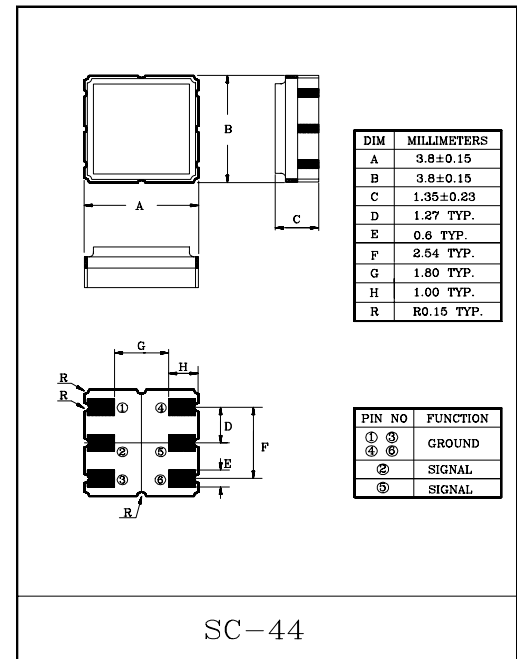
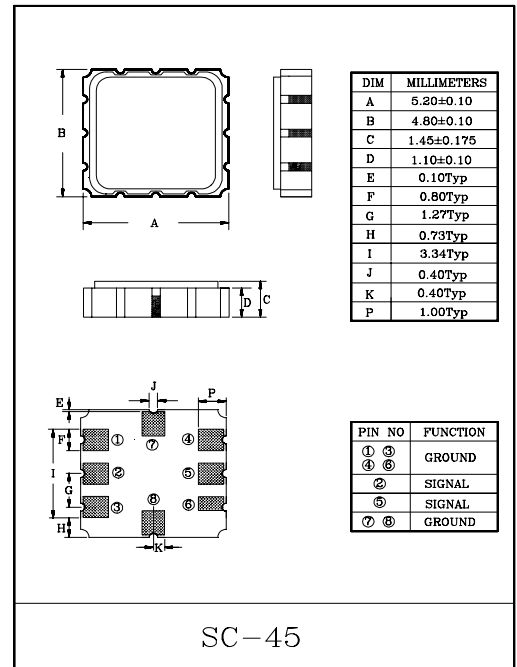
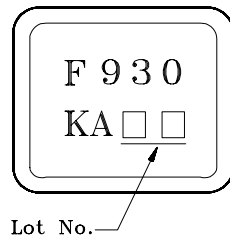
MAXIMUM RATINGS (Ta=25°C)

ITEM	SYMBOL	RATING	UNIT
Input Signal Level	IS <sub>max</sub>	0	dBm
DC Permissive Voltage	V <sub>DC</sub>	+10	V
Operating Temperature Range	T <sub>opr</sub>	-10~+50	°C
Storage Temperature Range	T <sub>stg</sub>	-30~+85	°C

Marking(SC-44)



(SC-45)



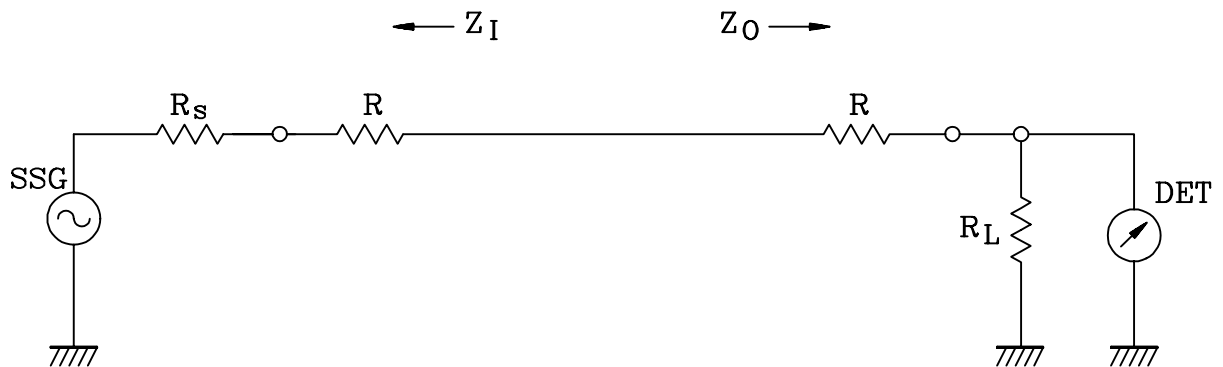
ELECTRICAL CHARACTERISTICS (Temperature 20±2°C, Humidity 65±5%)

ITEMS	SYMBOL	TEST CONDITION	MIN.	TYP.	MAX.	UNIT
Nominal Center Frequency	f <sub>0</sub>	-	-	930.5	-	MHz
Bandwidth	BW <sub>3dB</sub>	-	f <sub>0</sub> ±2.0	-	-	MHz
Insertion Loss	IL <sub>PASS</sub>	f <sub>0</sub> ±2.0MHz	-	-	4.0	dB
Ripple Level	A <sub>RIP</sub>	f <sub>0</sub> ±2.0MHz	-	-	2.0	dB
Rejection Level	IL <sub>STOP</sub>	f <sub>0</sub> -400~f <sub>0</sub> -40.8MHz	40	-	-	dB
		f <sub>0</sub> +50~f <sub>0</sub> +400MHz	40	-	-	dB
Input/Output Impedance	Z <sub>I</sub> (Z <sub>O</sub> )	-	-	50Ω	-	-

# KF930AS/AV

## TEST CIRCUIT

### REFERENCE LEVEL TEST CIRCUIT

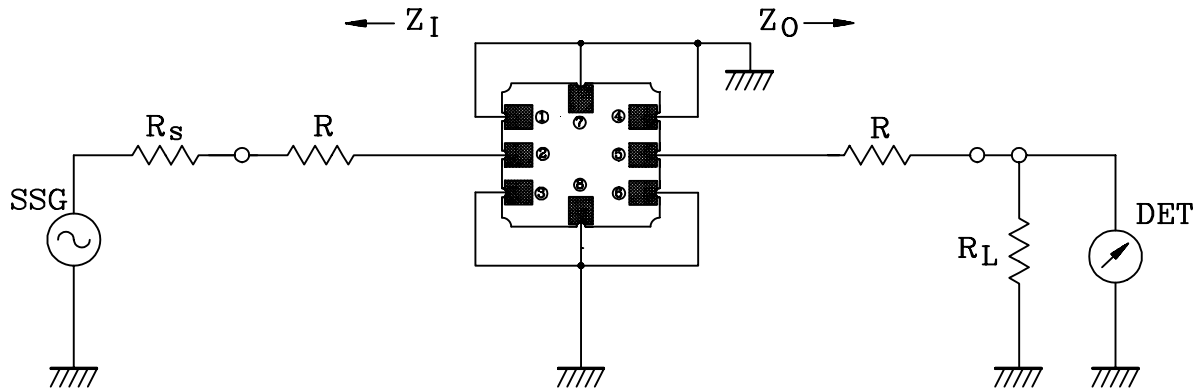


$R_s, R_L : 50\Omega$  (Internal Impedance of Source and Load)

$R : 0\Omega$

$$Z_I(Z_O) = R_s(R_L) + R$$

### MEASUREMENT CIRCUIT (SC-45)



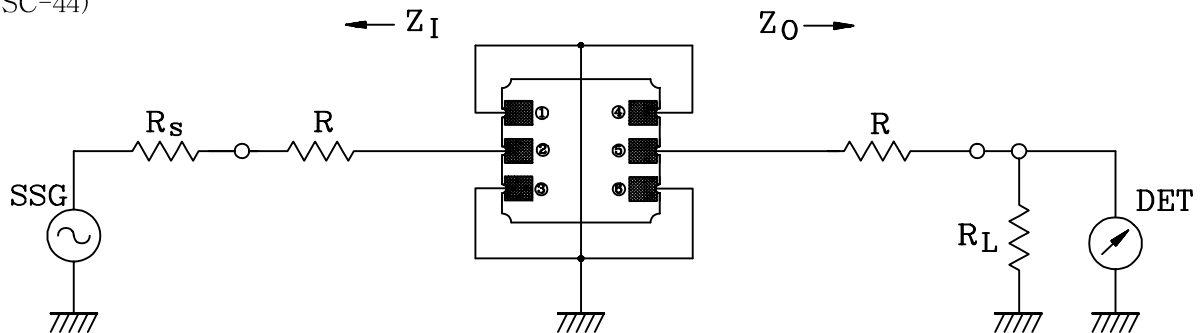
② :Input    ①, ③, ④, ⑥, ⑦, ⑧ :Ground    ⑤ :Output

$R_s, R_L : 50\Omega$  (Internal Impedance of Source and Load)

$R : 0\Omega$

$$Z_I(Z_O) = R_s(R_L) + R$$

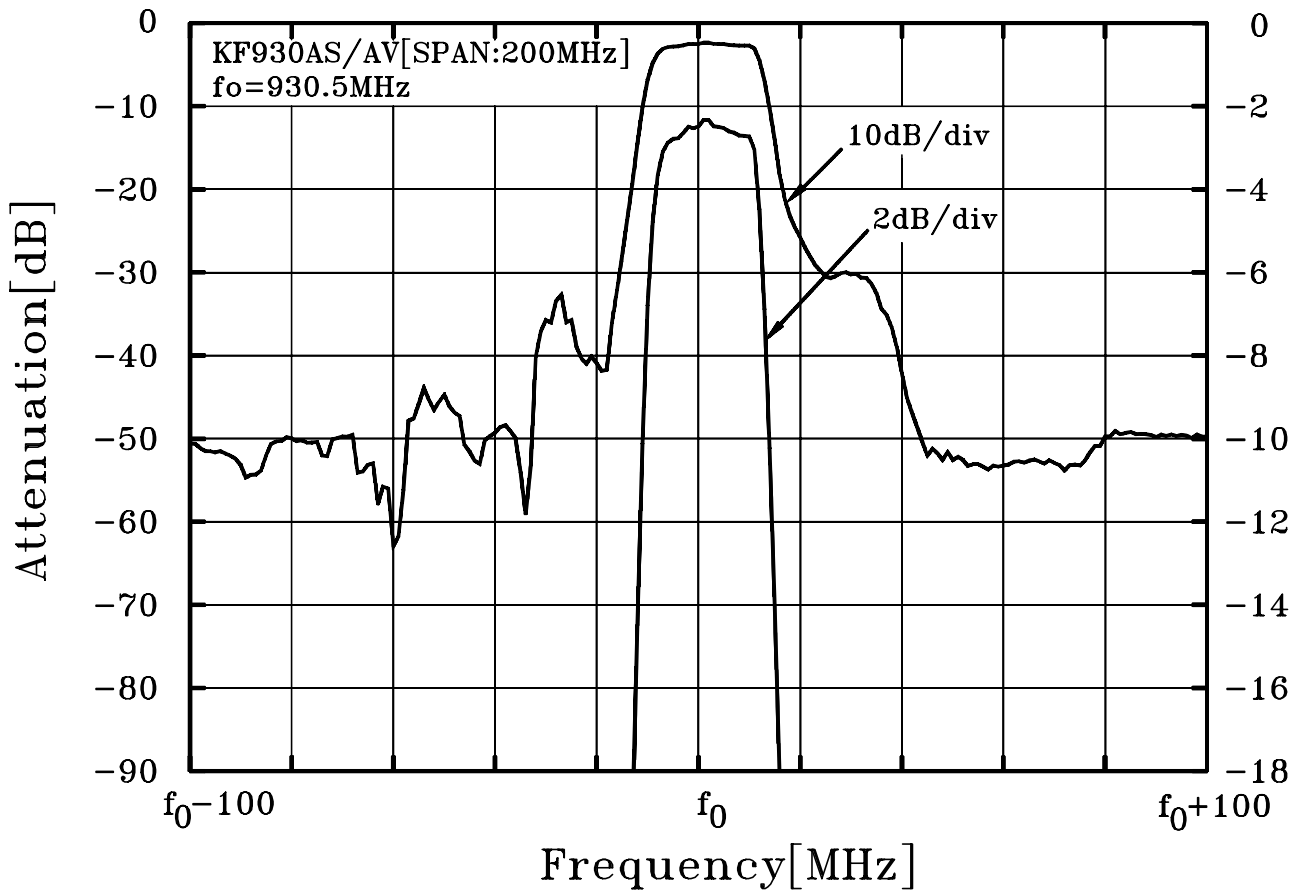
(SC-44)



② :Input    ①, ③, ④, ⑥ :Ground    ⑤ :Output

# KF930AS/AV

ATT - f



ATT - f

